

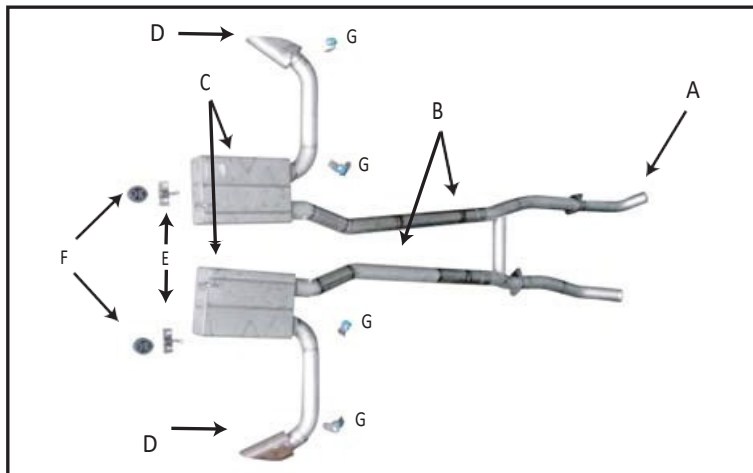
JBA

PERFORMANCE EXHAUST

A PerTronix Performance Brand ~ www.pertronixbrands.com ~ 909 599-5955

Installation Instructions & Warranty Information

50-2651 ~ 67-68 Mustang "Eleanor" Style
Side Exit Exhaust



PerTronix® thanks you for choosing a JBA Performance Exhaust Product. To realize the potential of JBA's engineering and excellent fit, Please Read and Understand these instructions completely prior to starting the installation.

Check that you received all the parts listed on the parts list, if you have any concerns, please contact PerTronix before continuing. Headers will have the part number stamped in the flange.

Work Smart – Work Safe! Most Header and Exhaust Installation are best performed on a lift. If a lift is not available, raise the vehicle and support on quality Jack Stands on level ground. Do not rely on a jack!

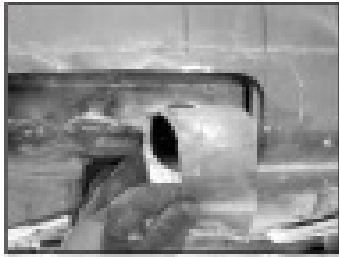
WARNING:

This product can expose you to chemicals including Lead, Nickel, Cadmium and Chromium which are known to the State of California to cause cancer and birth defects or other reproductive harm. For more information go to www.P65Warnings.ca.gov

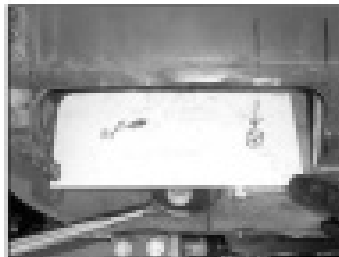
REV. 4 2-11-21 DSL

TO START:

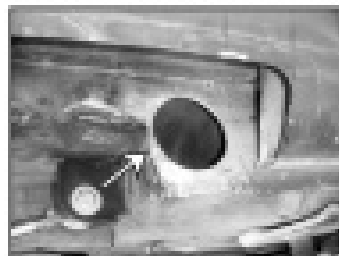
1. Remove and inventory JBA exhaust.
2. Disconnect negative battery cable and allow vehicle exhaust to cool.



3. Trim the rocker panel at the front of the side skirt hole approximately 2" more. Total length of side skirt hole should measure 11" across. **Note:** Passenger side shown.



4. Starting with the passenger side, place template 1A against the frame rail. **NOTE:** make sure to place it as far to the rear of the vehicle and into the top of the open area as possible. Once the template is in the proper position, use the hammer and center punch to make a mark at the point indicated on the template.



5. Using the 3" hole saw, drill at point marked in step 4. **Note:** We found that the body panels were different from side to side. The 3" hole is made very close to the junction of the body panels (arrow).

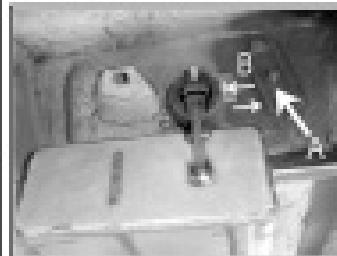


6. Continuing on the passenger side, place template 2A against inside frame rail. **NOTE:** make sure to place template as far forward and to the top of the floor pan as possible. Once the template is in the proper position, use the hammer and center punch to make a mark at the point indicated on the template.

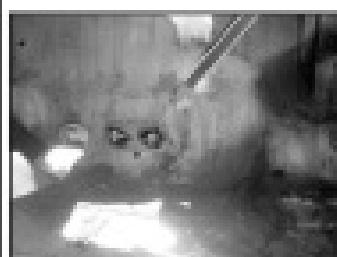


7. Using the 3" hole saw, cut at the point marked in step 6.

8. Repeat steps 4, 5, and 6 for the left side of the vehicle using templates 1B and 2B.



9. Place muffer hanger (E) (arrow A) in line with bolts for rear seat belts, 1-3/4" from top of bracket on driver side (arrow B) and bottom of passenger side bracket to the bolt hole. Mark holes and drill with 5/16" drill bit.



10. Working inside the interior of the vehicle, separate the pieces of muffer hanger (E). Find the plate containing the studs, insert studs through holes drilled in step 8.



11. Place the other side of hanger (E) (hook side) over the studs inserted through the interior in step 10. Install lock washers and nuts.

12. Install muffer assemblies (C) by feeding the side pipes through the 3" holes made in step 7. Attach the muffer assembly (C) to the muffer hanger (E) using the rubber isolators (F) (arrow). The side pipe from the muffer is tack-welded and must be fully welded for final assembly.

Attention: Hang entire assembly to check alignment and fitment. The exhaust pipe from the muffer is tack-welded to allow for vehicle variation. If fitment must be adjusted, cut tack-weld, align properly and re-tack in car for final fitment making sure that the pipe is centered in the hole. Once proper fitment has been achieved fully weld the side pipe.

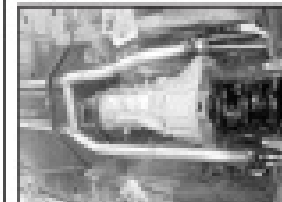


- 13A & B. After muffer assemblies are in place, attach hangers (G) to the side pipe on the outside of the frame rail (photo A) and inside of the frame rail (photo B). **Attention:** You cannot remove the side pipe after hangers are welded. Do not weld hangers until pipe is centered.

14. Repeat step 13 to complete the muffer installation for the remaining side of the vehicle.



15. Insert intermediate pipes (B) through the front of the sub frame connector assembly.



16. Install H-pipe (A) to the intermediate pipes (B) and the headers.

17. Tighten all fasteners and clamps.



18. Install side skirts. (Not supplied by JBA)



19. Install exhaust tips.

20. After installation, it is recommended that all clamps be retightened.

21. Tack weld all slip connections in three spots.

22. Lower the vehicle and reattach the negative battery cable.

NOTES:

1) All exhaust systems will expand about 1" rearward when exhaust temperatures start to rise.

2) Use Anti-seize on threads of clamps.

Parts List:

A. H-Pipe (Sold Separately)	1	B. Intermediate pipes	2
C. Muffler assemblies	2	D. Exhaust tips	2
E. Rear muffler hanger	2	F. Rear muffler hanger isolators	2
G. Side pipe exhaust hangers	4		



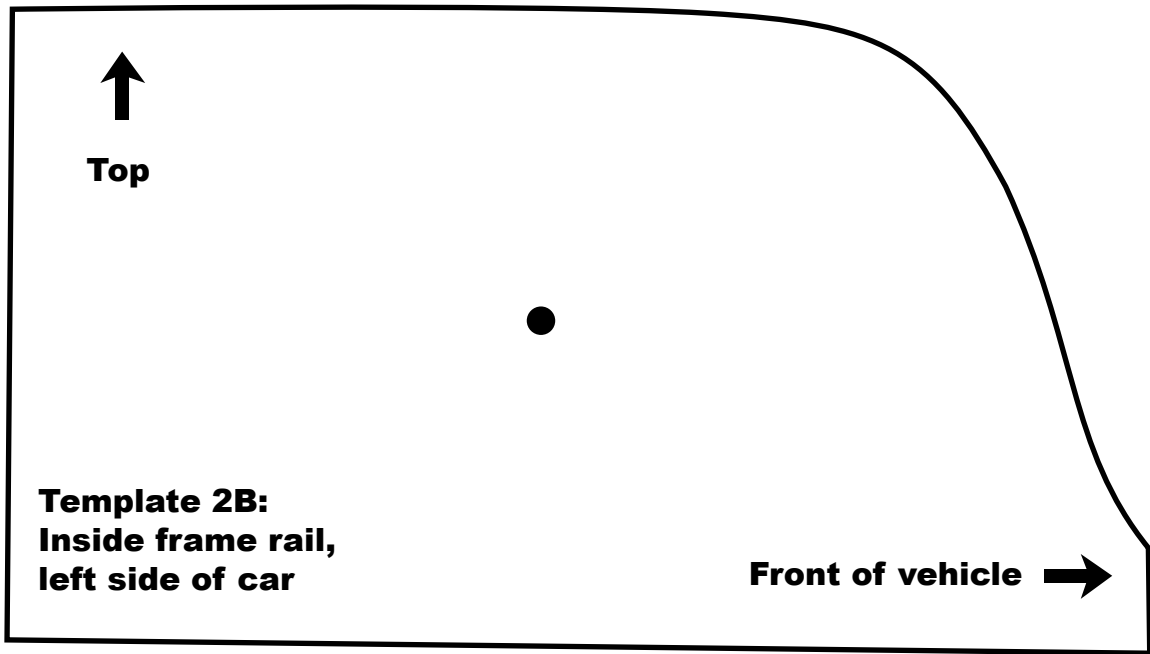
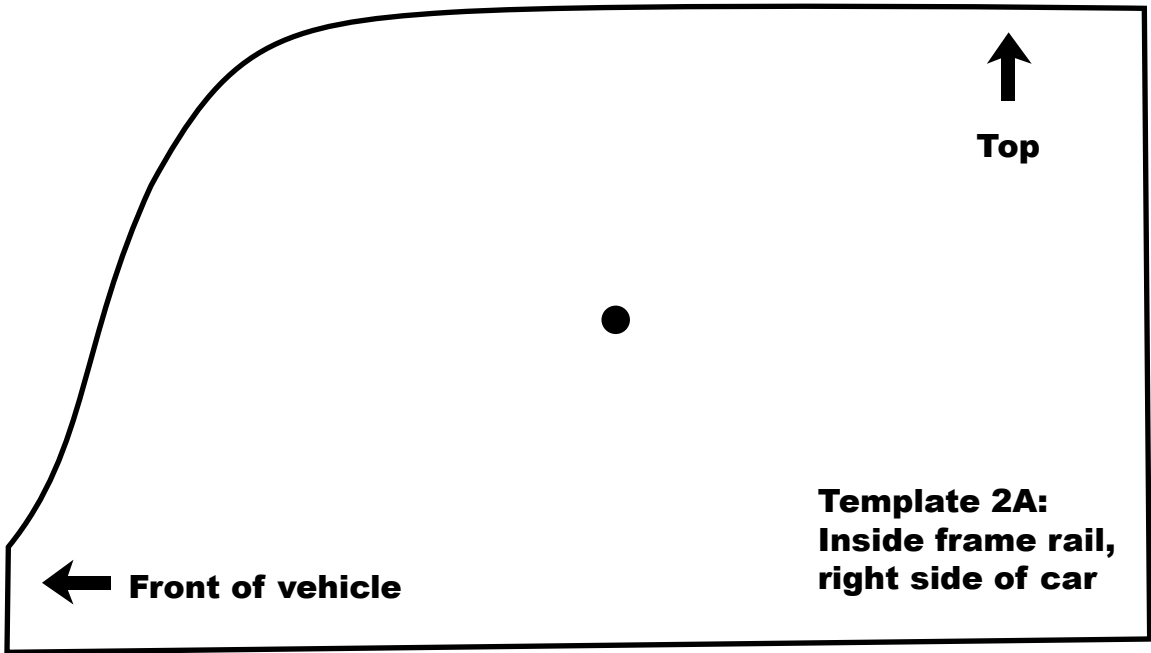
This product is considered a Replacement part per CARB and EPA regulations for emissions compliance and is legal for sale and use on all vehicles in all 50 states when installed according to the Manufacturer's Application Guide and Installation Instructions.

JBA LIMITED WARRANTY

All JBA Headers and Exhaust products are guaranteed, to the original purchaser, to be free of defects in materials and workmanship for one year. This warranty covers the replacement or repair of the product only and does not cover the cost of removal and installation, customer applied aftermarket coatings or any discoloration or corrosion of finished surfaces.

Damage or product failure resulting from collision, improper installation, off-road use, road hazards, the use of exhaust insulating wrap or like products or rust occurring after installation, is not covered by the warranty. The warranty extends only to the original purchaser.

Should a part become defective it should be returned to the original selling retailer and must be accompanied with the sales receipt. If there is no retailer in your area, call the factory for a return authorization and return your part prepaid to the factory for inspection. PerTronix reserves the rights to replace or repair the alleged defective part and return the part freight collect.





Top



Rear of vehicle



**Template 1B:
Outside frame rail,
left side of vehicle.**



Top



Rear of vehicle

**Template 1A:
Outside frame rail,
right side of vehicle.**

