



Installation Instructions

818177

2024-2026 Toyota Tacoma
131.9 / 145.1" Wheelbase



Installation requires moderate mechanical skill. If this job is beyond your abilities, seek the services of a qualified technician.

If you do not understand any part of these instructions, please call Flowmaster Technical Support at (866) 464-6553 for assistance.

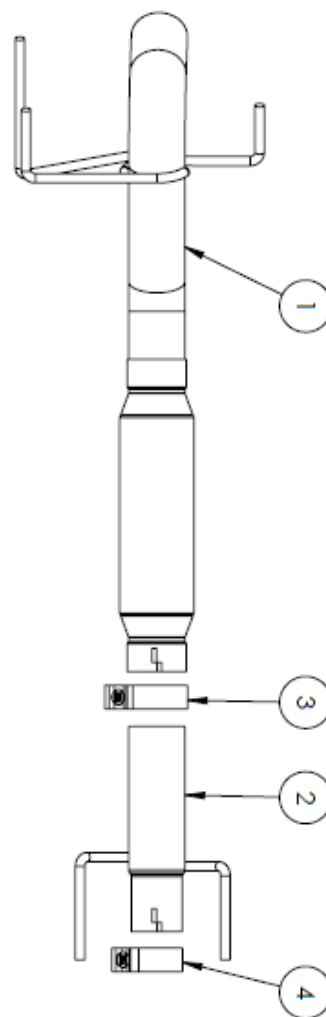
Apply penetrating oil generously to clamps, fasteners, pipes, and hanger rods for ease of disassembly.

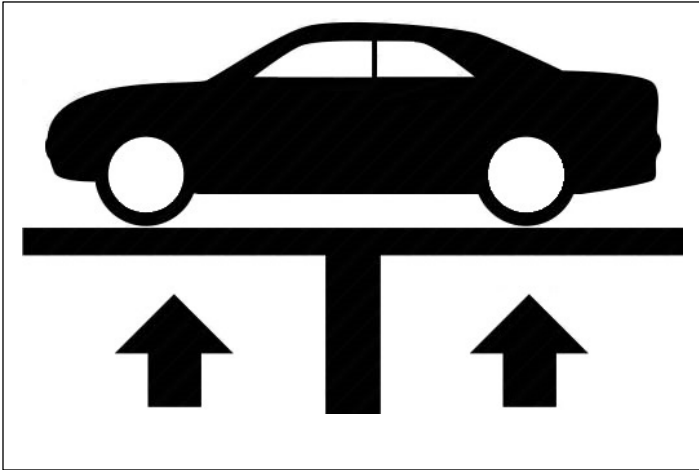
REVIEW THE INSTRUCTIONS & VERIFY THE KIT CONTENTS

Take a moment to read and understand these instructions before installing your Flowmaster exhaust kit.

ITM#	Part #	Description	Qty.
1	815430-621	Muffler Assembly	1
2	26986S	Muffler inlet pipe	1
3	MC300BS	3" Band Clamp	1
4	MC250BS	2.5" Band Clamp	1

Use the parts drawing and list to identify components and verify your kit's contents. In the unlikely event that any parts are missing, please contact Flowmaster Technical Support for replacements. 1-866-464-6553





Vehicle Compatibility

Model Year: 2024-2026

Make: **Toyota**

Model: **Tacoma**

Engine: **2.4L Turbo 4 cyl**

- **131.0" WB**
- **145.1" WB**

BEFORE STARTING:

Raise the vehicle to a minimum of eighteen inches. A floor hoist is ideal. If no hoist is available, we strongly urge the use of axle stands as a safety measure. **Please read and understand these instructions and disclaimer in their entirety before attempting installation.**

CAUTION! WORK ONLY ON A LEVEL SURFACE. USE JACKS /JACK STANDS OF SUFFICIENT CAPACITY TO LIFT AND SUPPORT YOUR VEHICLE. NEVER WORK UNDER A VEHICLE SUPPORTED BY A FLOOR OR BUMPER JACK.

Removing the OEM Exhaust:

NOTE: Cutting factory Muffler Inlet pipe is necessary for installation of the Flowmaster 818177 exhaust kit.

Please read and follow all instructions before attempting to install this exhaust system.

1. Apply penetrating oil to each rubber Hanger on the exhaust.
2. **Lifting the vehicle to full rear suspension drop or removing the spare tire will be necessary to remove the OEM Tail pipe from the vehicle.**
3. Support the muffler assembly before making cuts or removing any rubber hanger isolators.
4. Remove the (2x) 14mm nuts from the tail pipe flange connection just after the OEM muffler. Remove the Rubber hanger isolators from the hanger rods and remove the OEM tail pipe.
5. Mark the muffler inlet pipe as shown in **Figure. 1**
6. Measure 2.5" from the muffler body and mark the tube.
7. Wrap a piece of painter's tape around the pipe at the mark. Cut the OEM Muffler inlet pipe with a reciprocating saw or cut off wheel using the Installed tape as a straight edge. Remove the muffler and deburr the Inlet Pipe inside and out.

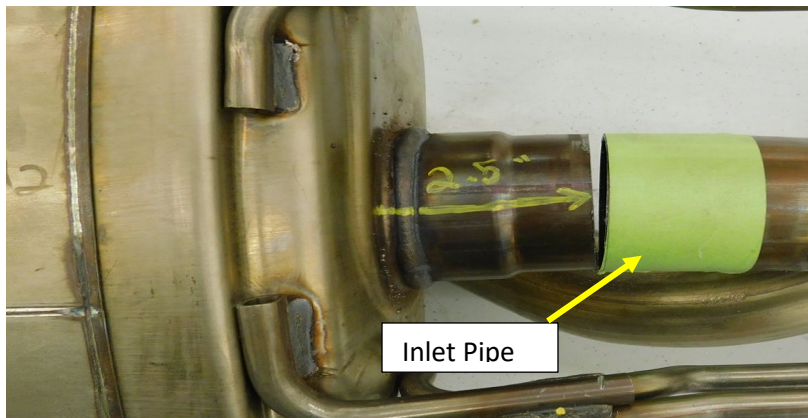


Figure .1

Installing the 818177 Outlaw Muffler Assembly

1. Install the 2.5" Band clamp (4) onto the reduced end of the Muffler Inlet pipe (2). **Fig.2**
2. Install the reduced end of the Flowmaster Muffler Inlet pipe (2) on to the OEM Muffler inlet pipe (A) and install the rubber Isolators (B). Support the Muffler inlet pipe.
3. Install the 3.0" band clamp (3) on to the Muffler assembly (1) inlet. **Fig.2**
4. Install the Flowmaster muffler assembly (1) onto the Muffler inlet pipe (2) and tighten the 3" clamp to allow for adjustment. **Fig.2**
5. Install the rubber isolators (C) at the rear of the muffler assembly. **Fig.2**
6. Align the muffler assembly and tighten the clamps.

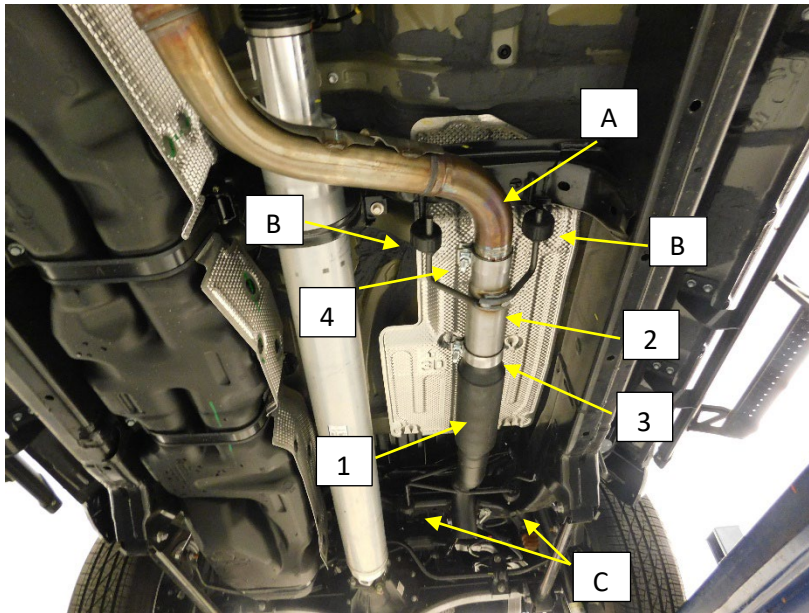


Figure.2

Enjoy your Flowmaster Exhaust!