



Installation Instructions

718154

2021-2025 Ford Bronco Sport
1.5 and 2.0L Engine

Installation requires Cutting the OEM exhaust and moderate mechanical skill. If this job is beyond your abilities, seek the services of a qualified technician.

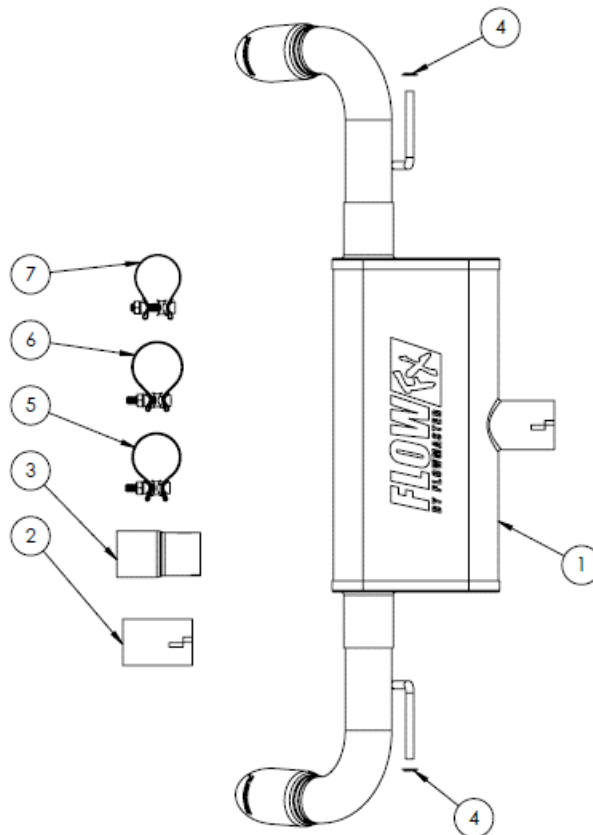
If you do not understand any part of these instructions, please call Flowmaster Technical Support at (866) 464-6553 for assistance.

Apply penetrating oil generously to clamps, fasteners, pipes, and hanger rods for ease of disassembly.

REVIEW THE INSTRUCTIONS & VERIFY THE KIT CONTENTS

Take a moment to read and understand these instructions before installing your Flowmaster exhaust kit.

ITM#	Part #	Description	Qty.
1	70005-604	Muffler Assembly	1
2	TB943M	Adaptor "A" (2.0L ENGINE)	1
3	TB943M	Adaptor "B" (1.5L ENGINE)	1
4	HW502	7/16" Push Retainers	2
5	MC248BS	63mm Band clamp	1
6	MC250BS	2.5" Band Clamp	1
7	MC217BS	2.17" Band Clamp	1



Use the parts drawing and list to identify components and verify your kit's contents. In the unlikely event that any parts are missing, please contact Flowmaster Technical Support for replacements.

Vehicle Compatibility

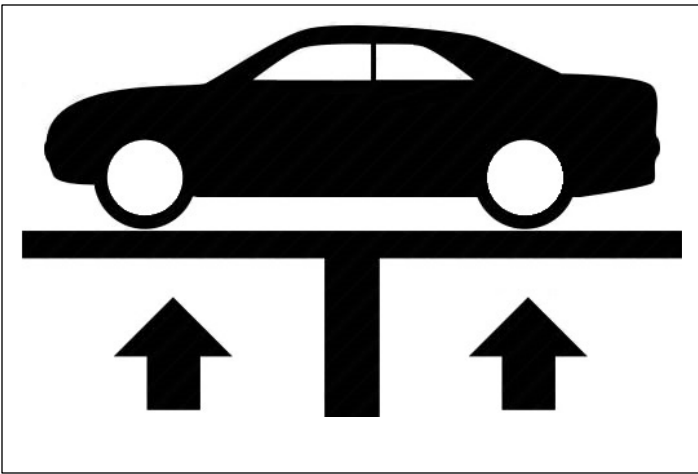
Model Year: 2021- 2025

Make: **Ford**

Model: **Bronco Sport**

Engine: **1.5L or 2.0L Eco Boost**

Note : Requires Cutting the factory Exhaust



BEFORE STARTING:

Raise the vehicle to a minimum of eighteen inches. A floor hoist is ideal. If no hoist is available, we strongly urge the use of axle stands as a safety measure. **Please read and understand these instructions and disclaimer in their entirety before attempting installation.**

CAUTION! WORK ONLY ON A LEVEL SURFACE. USE JACKS /JACK STANDS OF SUFFICIENT CAPACITY TO LIFT AND SUPPORT YOUR VEHICLE. NEVER WORK UNDER A VEHICLE SUPPORTED BY A FLOOR OR BUMPER JACK.

Removing the OEM Exhaust:

NOTE: Cutting the Factory exhaust is necessary. Please read and follow all instructions before attempting to install this exhaust system.

Cutting the factory exhaust pipe just before the muffler as shown in Fig.1 and Fig.2

*** This process is the same for 1.5L or 2.0L Engines**

1. Measure 2.5" from the Factory muffler Body (A) and make a reference mark (B) on the exhaust pipe (C) **Fig.1.**
2. Use painters' tape at the witness mark to make a straight edge to follow when cutting. **Fig.2**
3. Cut exhaust pipe at the witness mark, following the tape edge as you go. **Fig.2**
4. Deburr the inside and outside of the tubing.

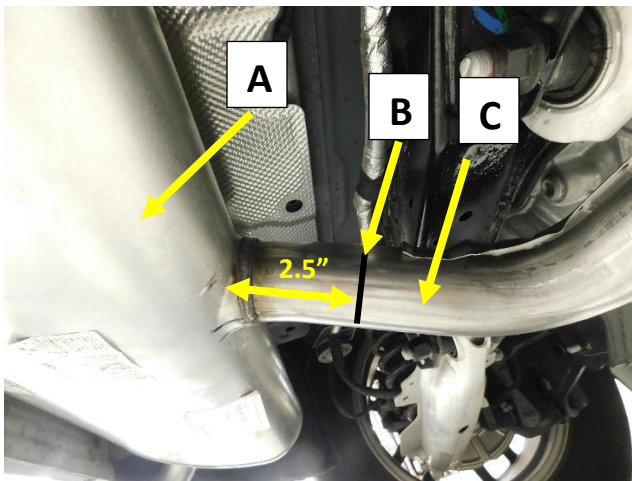


Figure.1



Figure.2

Removing the OEM Exhaust: Continued

5. Support the OEM muffler assembly with jack stands.
6. Remove the M10 nut securing the wire harness to the passenger side exhaust hanger stud and remove the harness clip from the stud.
7. Remove the M10 Studs (X1) from each exhaust hanger assembly.
8. Remove the OEM Muffler assembly from the vehicle.

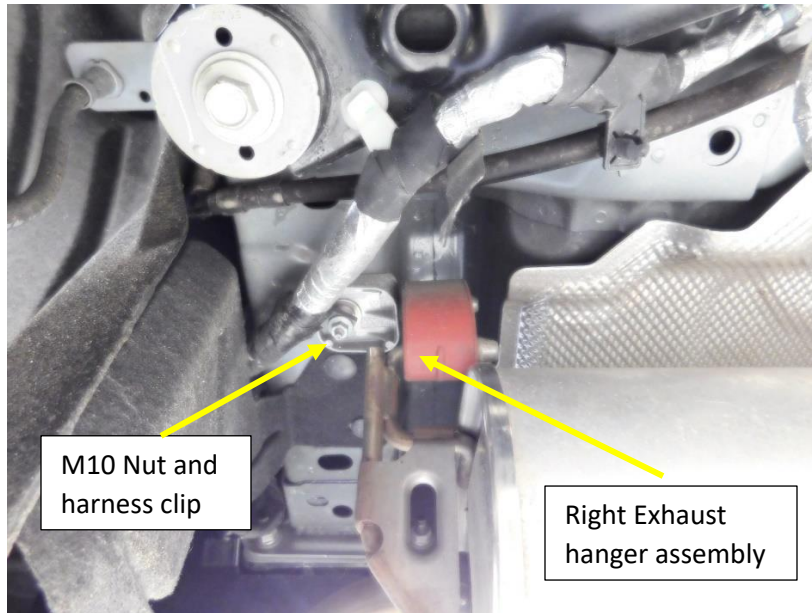


Figure.3

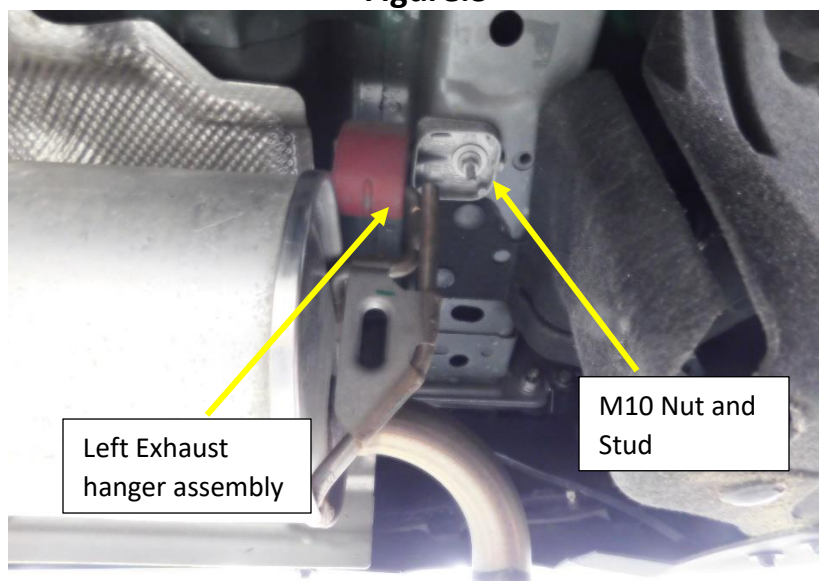


Figure.4

INSTALL YOUR FLOWMASTER EXHAUST SYSTEM



Before installing clamps in the following steps, remove their nuts, apply anti-seize compound to the bolt threads, and re-install the nuts.

1. Remove the hanger assemblies from the OEM muffler and transfer them to the Flow FX Axle Back exhaust hanger rods (**E**). **Fig.5**
2. Install the FlowFX muffler assembly into the vehicle (**F**) and install the M10 studs (1X each side) into the hanger rod assembly's and tighten (**G**). **Fig.5**
3. Install the 2.5" band Clamp (**6**) (Largest of the three clamps provided) over the muffler inlet pipe (**H**). Bolt on the right-side nut facing the ground. **Fig .5**

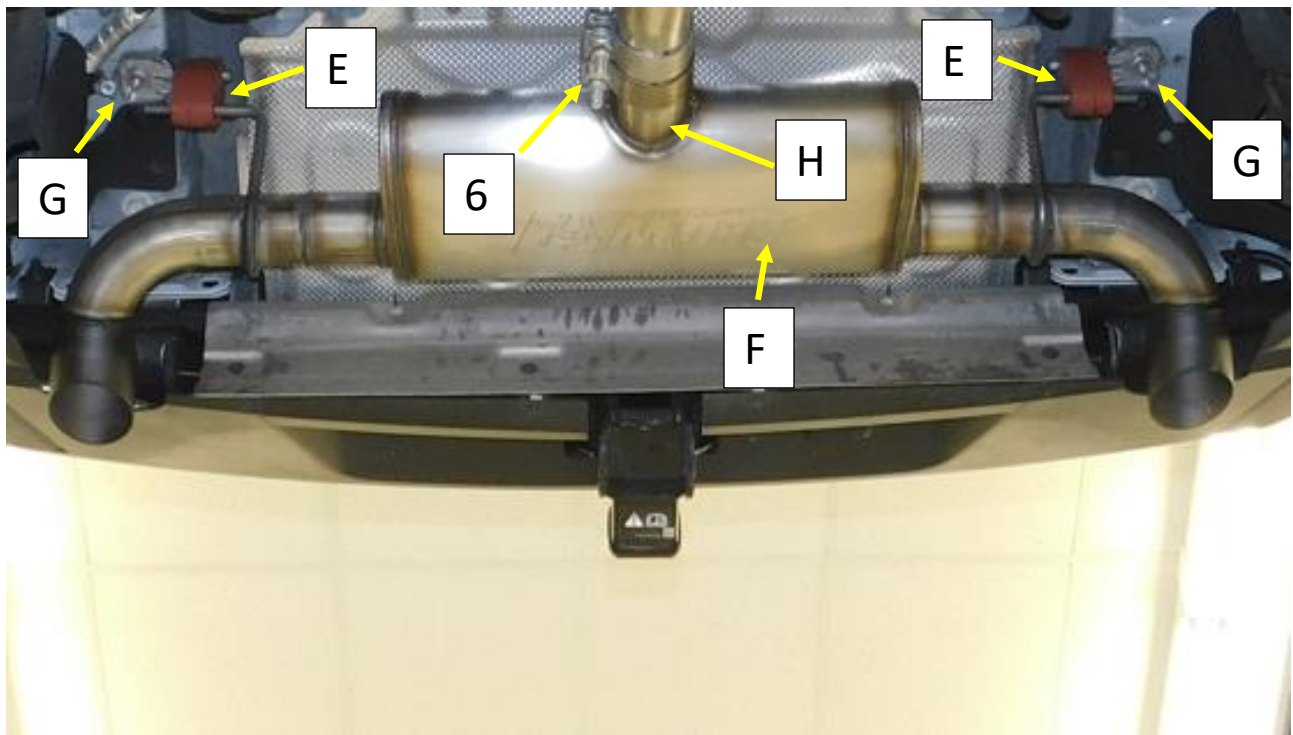


Figure.5

Installation Continued:

Note: This kit is designed to accommodate the 1.5L and 2.0L exhaust systems. You must use the correct adaptor pipe and Band clamps for the exhaust system your vehicle is equipped with. Follow the steps outlined below for your application. Use the parts list and diagram to identify the parts required.

2.0 Liter engine Installation

- **Adaptor Pipe "A" PN: TB943M (2)** This will be the adaptor pipe supplied with No step down
 - **Band Clamp PN: MC248BS (63mm) (5)**
 - **Modification to the Heat shield (2.0L ONLY)**
1. The lip, on the heat shield just before the muffler will need to be rolled back on 2.0L applications. -This can be done on the vehicle
 - Use a large flat blade screwdriver to lift the edge of the heat shield to a 45 degree angle.
 - Use a small hammer to work the lip of the heat shield back to the weld and then flatten the heat shield edge back over itself. **Fig. 6, 7**

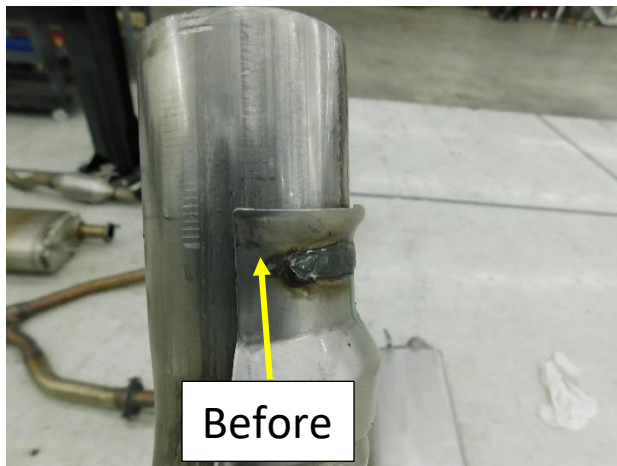


Figure.6

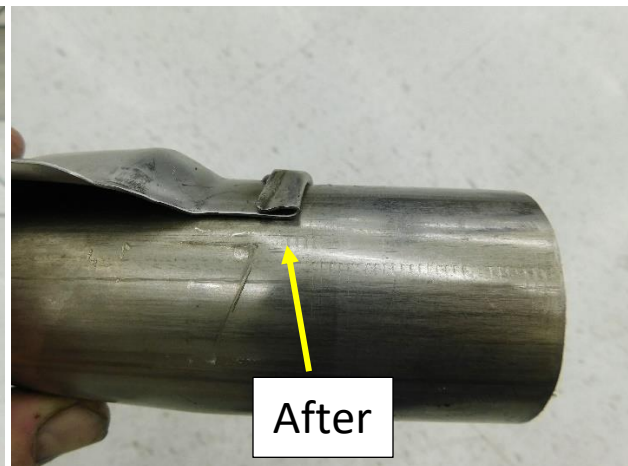


Figure.7

2. Install adaptor pipe "A" (2) (no step down) into the muffler inlet pipe (H). **Fig.8**
Important: Be sure the **Z-Notch** is out.
3. Install the provided 63mm band clamp (5) over the OEM exhaust pipe (C) with the bolt to the right and the nut facing down. **Fig.8**
4. Align the muffler adaptor pipe (2) to the OEM Exhaust pipe and slide the adaptor pipe down and over the OEM exhaust pipe and into the band clamp (5). Slide the adaptor down until it touches the rolled heatshield edge. **Fig.8**
5. Install the band clamp over the Z-Notched end of the adaptor pipe and tighten as close to the end of the pipe as possible. **Fig. 8**

2.0L Installation Continued:

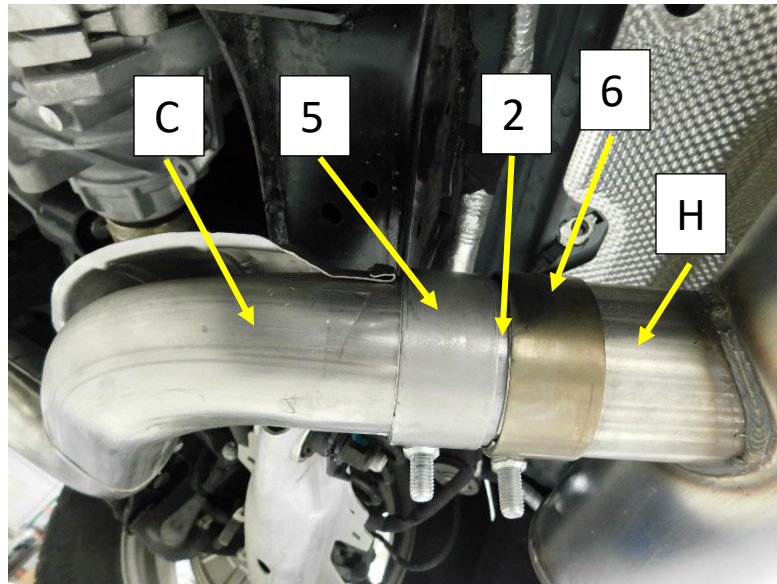


Figure.8

6. Slide the Muffler down on to the adaptor pipe as far as possible leaving approximately a 1/8" gap between the clamps. Tighten the 2.5" band clamp to allow for adjustment.
7. Make the final adjustments to the muffler aligning the tips to the cut outs in the rear vallance.
8. Tighten the clamps and install the push nuts onto the hanger rods at the hanger isolators to keep the tips centered in the vallance.

Note: There should be a minimum of 3/4" inch between the tip and the rear vallance. The soft plastic vallance is easily trimmed if needed.

Installation Continued:

1.5 Liter engine Installation

- Adaptor Pipe "B" PN: TB944M (3) This will be the adaptor pipe supplied with- Step Down
 - Band Clamp PN: MC217BS (2.17 in), (7) (smallest of the three clamps provided clamps provided)
 - Modification to the Heat shield -Not Required
1. Install adaptor pipe "B" (3) (with Step Down) into the muffler inlet pipe (H). **Fig.9**
Important: Be sure the **Z-Notch** and reduced end are out.
 2. Install the provided 2.17in band clamp (7) over the OEM exhaust pipe (C) with the bolt to the right and the nut facing down. **Fig.9**
 3. Align the muffler adaptor pipe (3) to the OEM Exhaust pipe and slide the adaptor pipe down and over the OEM exhaust pipe (C).
 4. Slide the adaptor down until the step-down edge is approximately $\frac{1}{4}$ " out of the muffler. Tighten the 2.5" band clamp on the muffler inlet. **Fig.9**
 5. Slide the 2.17in Band clamp (7) over the adaptor and align the clamp to the edge of the adaptor (3). Tighten the 2.17in clamp with the adaptor approximately $\frac{1}{2}$ " from the bend. **Fig.9**

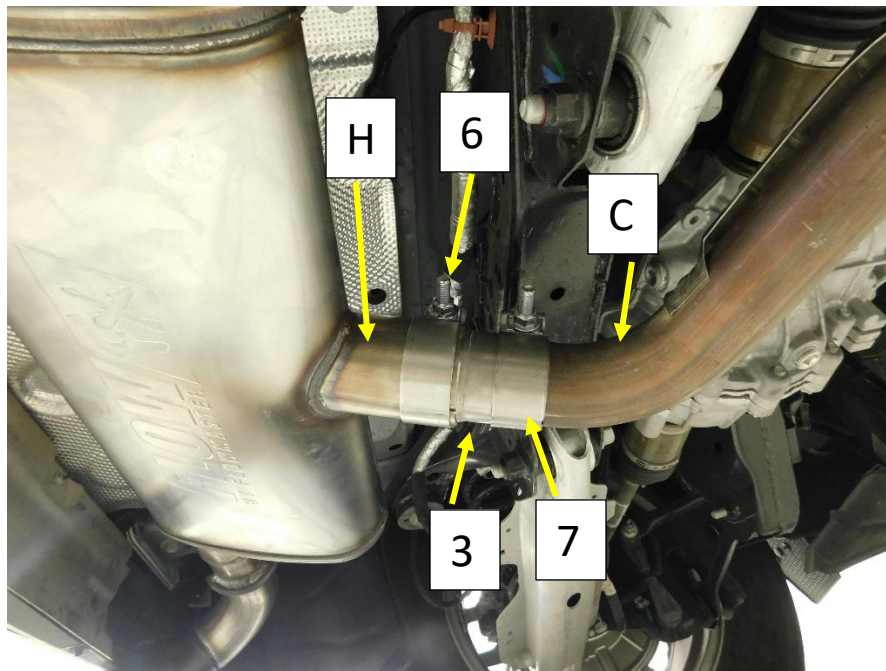
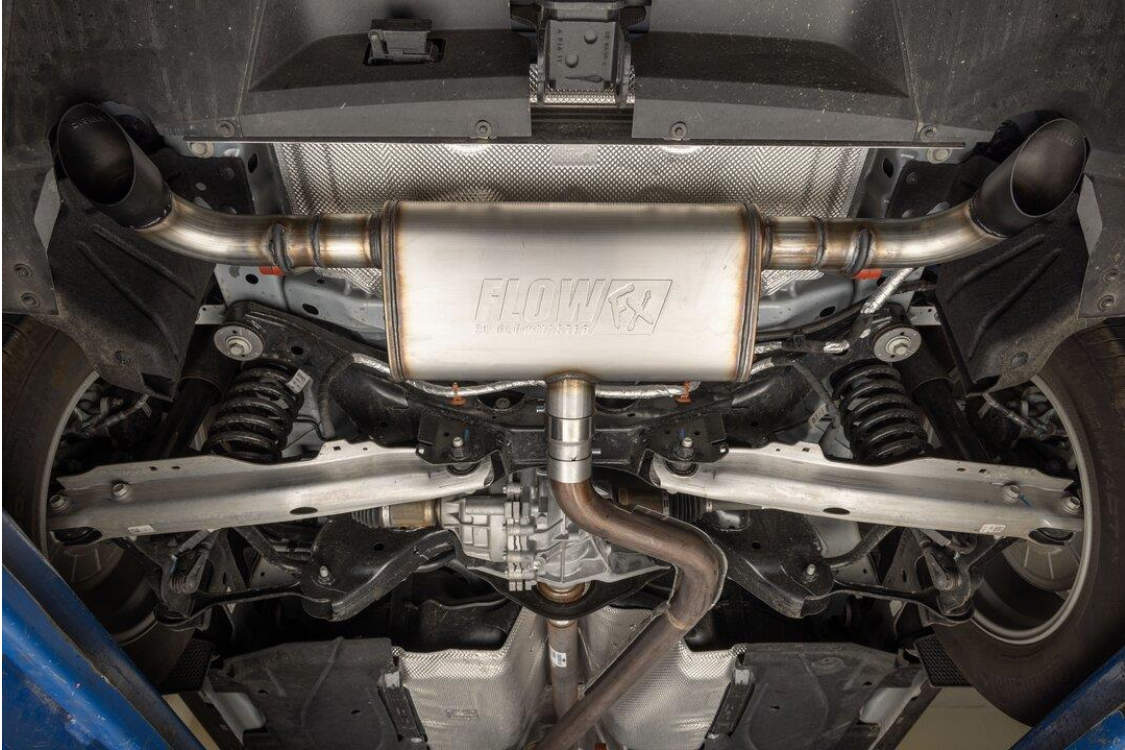


Figure.9

6. Tighten the clamps and install the push nuts onto the hanger rods at the hanger isolators to keep the tips centered in the vallance.

Note: There should be a minimum of $\frac{3}{8}$ " inch between the tip and the rear vallance. The soft plastic vallance is easily trimmed if needed.



Enjoy Your Flowmaster Exhaust!

