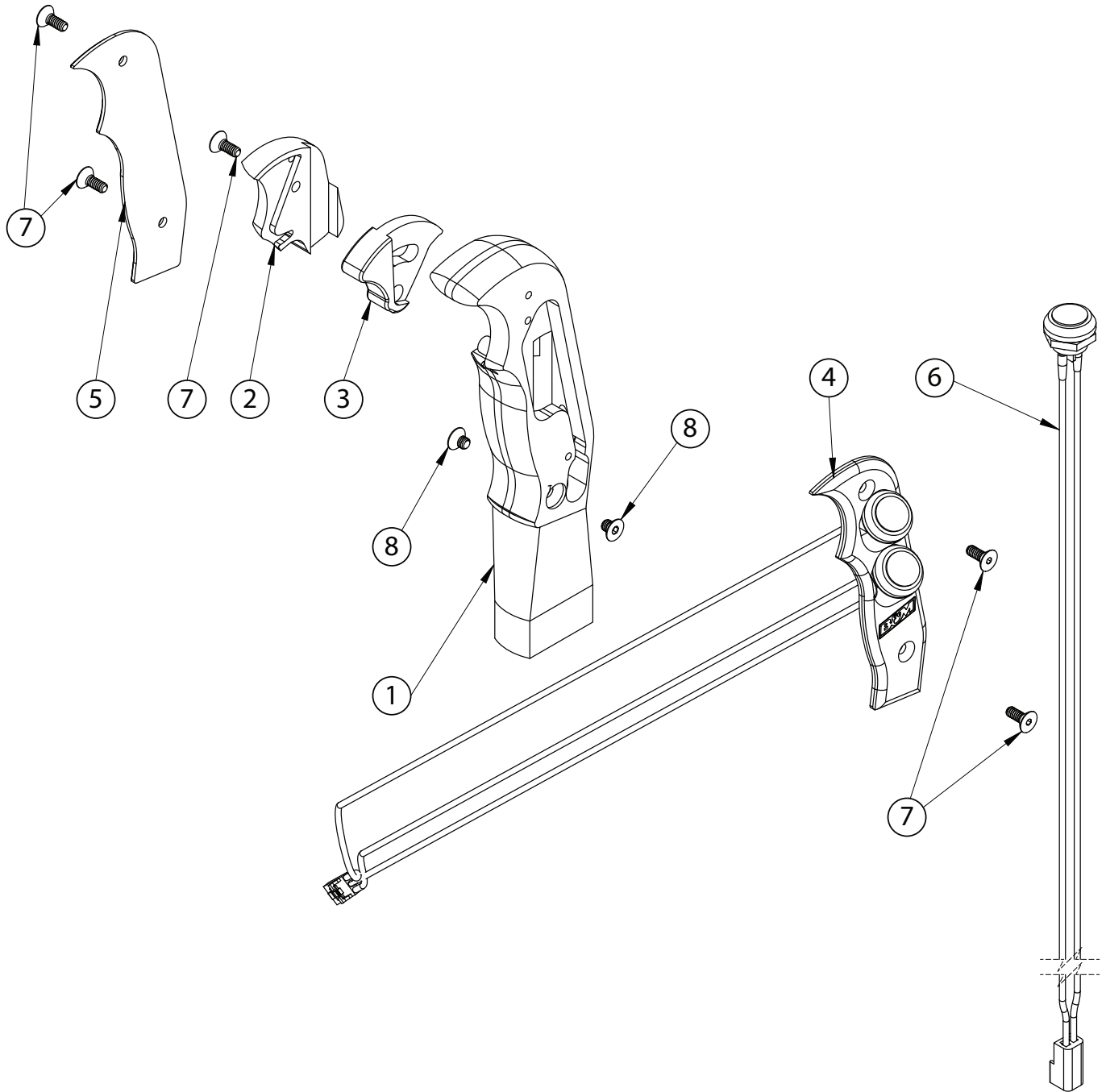




Installation Instructions
81146
2011-14 FORD F-150
3.5L, 3.7L, 5.0L, 6.2L ENGINE
 Applies to models with center console shifter, equipped with tow/haul and select shift buttons.



ITM #	PART #	DESCRIPTION	QTY.
1	4001763	Shift Handle Body	1
2	4001764	Cover	1
3	4001759	Trigger	1
4	4001819	Left Side Plate	1

ITM #	PART #	DESCRIPTION	QTY.
5	4001463	Right Side Plate	1
6	2480443	Switch Assembly	1
7	3401294	6-32 x 3/8" Screw	5
8	97003166	M4-0.7 x 5mm Screw	2

OVERVIEW:



1. Take a moment to read and understand these instructions before installing your B&M Magnum Grip shift handle.

NOTE: Please inventory all parts before starting the installation process and call our tech line to report any missing parts. This will help avoid potentially stranding your vehicle until any missing replacement parts arrive.

WARNING:

For maximum safety, perform this installation on a clean, level surface with engine turned off.

REMOVE STOCK COMPONENTS:



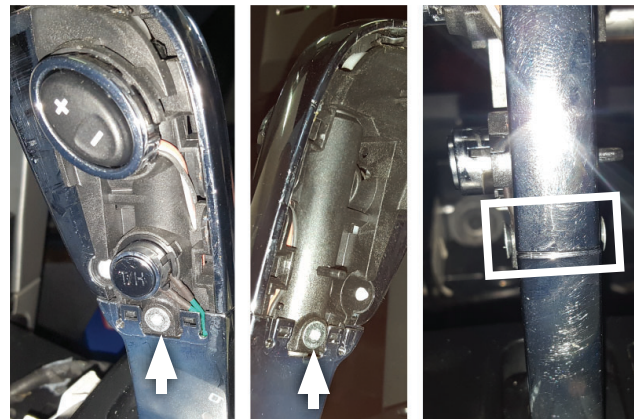
2. Set shifter into park then release and lift cupholder from console.



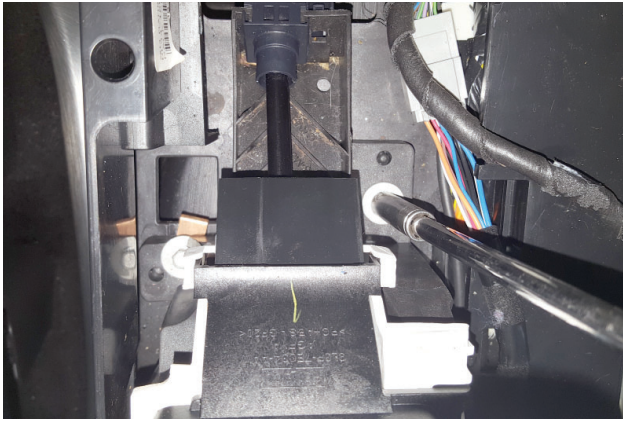
3. Unplug wire from bottom of cupholder. Then remove cupholder completely from console.



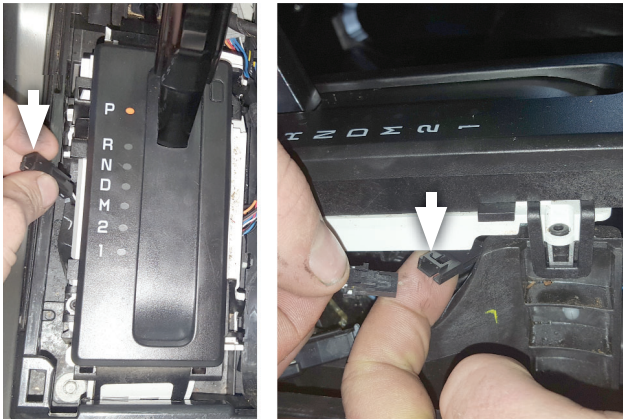
4. Release and remove both sides of handle from shifter.



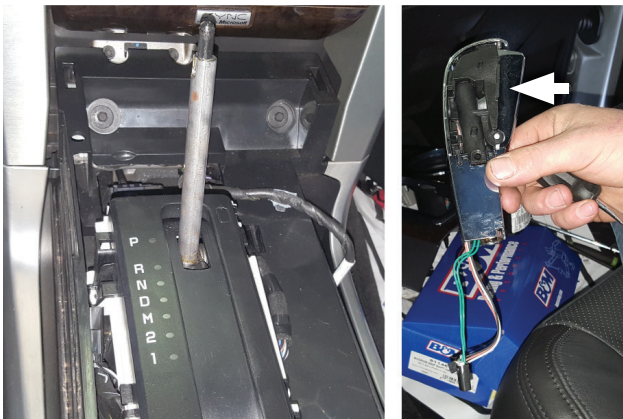
5. Remove screws (x2) from both sides of shifter handle.



6. Loosen (x4) bolts securing shifter base to console.

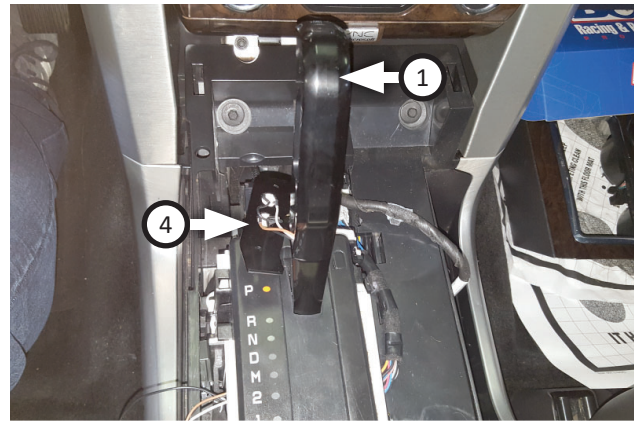


7. Lift shifter enough to access its side. Disconnect and pull out shift button wires out so they are accessible, then disconnect and pull out tow/haul wires so they are accessible.



8. Remove factory shifter handle from stem as shown.

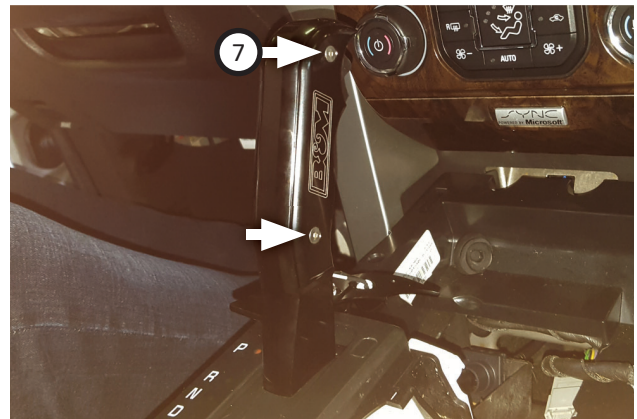
INSTALL MAGNUM GRIP SHIFTER HANDLE:



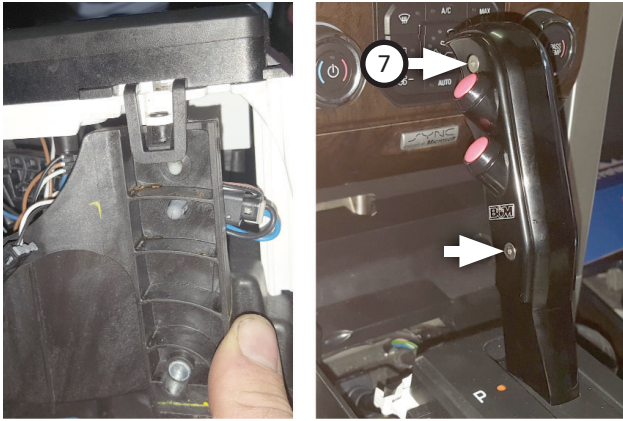
9. Disassemble **right side plate (5)** and loosen **left side plate (4)** from **shift handle body (1)**, then set shift handle onto stem.



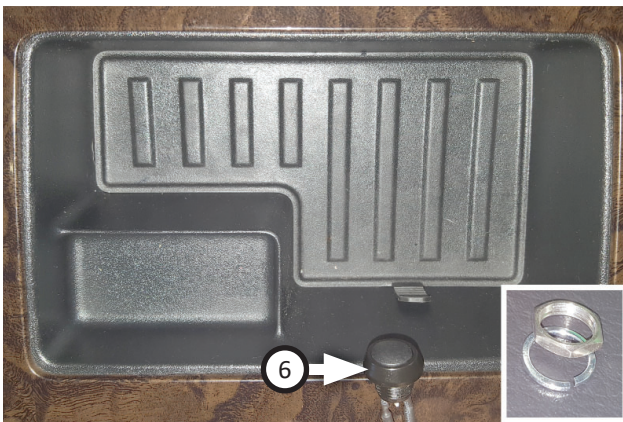
10. Install (x2) **screws (8)** onto both sides of shift handle body.



11. Re-install right side plate onto shift handle body using (x2) **screws (7)**.



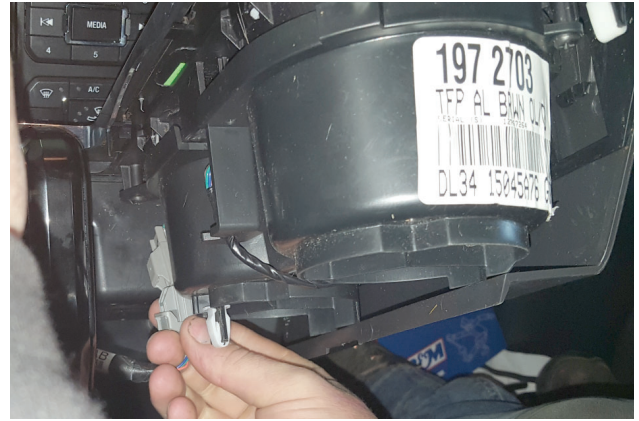
12. Route wiring over to shift button wires (from step 7) and connect them. Re-install left side plate onto shift handle body using (x2) screws (7).



13. Install **switch assembly (6)** into cupholder where you can easily reach it. Trim hole just big enough to fit switch wiring through then pull wiring until button rests against console wall. Fasten assembly using lock nut and washer on back side of console.



14. Route switch assembly wiring over to tow/haul button wires (from step 7), connect them and tuck wiring down out of the way.



15. Secure shifter back onto console with (x4) screws (loosened step 4). Then connect shift handle wiring to bottom of cupholder.



16. Tuck any wiring aside, making sure to avoid moving components, then put cupholder back into place as shown.



Congratulations, the installation of your B&M Magnum Grip Shifter Handle is now complete!

