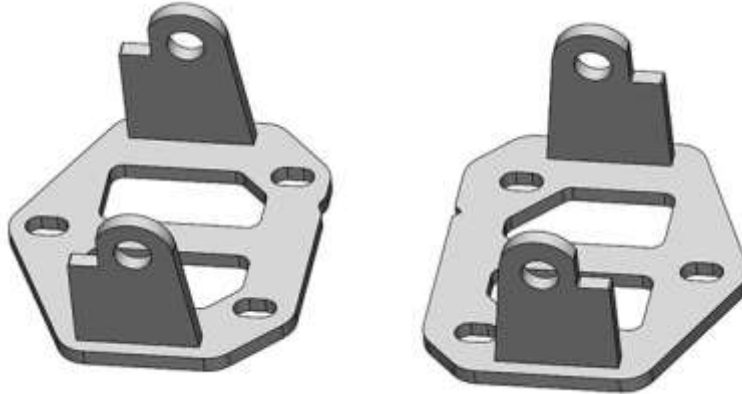




1982-2004 GM S10 LS Swap Engine Mounting Brackets 71221029HKR Installation Instructions



Thank you for choosing to use HOOKER™ engine swap mounting brackets as part of your LS swap project. These mounting brackets are part of the most comprehensively engineered system of mounting components, headers and exhaust systems available for this application. Please read these instructions thoroughly before attempting installation.

PRE-INSTALLATION CONSIDERATIONS:

Installation of these brackets requires the use of OE style 4th-gen F-Body LS engine mounts, such as the Hooker Blackheart Heavy Duty LS Clamshell Engine Mounts (71221018HKR) and Hooker Blackheart Polyurethane Mount Inserts (71221016HKR – Black or 71221017HKR – Red). If unavailable, polyurethane inserts from Prothane® (7-512) or Energy Suspension® (3-1151) will also work with the Hooker Blackheart clamshell mounts. GM 22179268 or Anchor® 3064 can be used as a substitute if needed, but will not be as stable.

In addition, a pair of metric motor mount through-bolts and a pair of locking flange nuts will need to be sourced for connecting the Hooker engine brackets to the motor mounts (see Hooker Blackheart Bolt Hardware Kit – P/N 71223015HKR). Specification requirements are 10.9 M12 x 1.75 x 140mm for the bolts and M12 x 1.75 class 8 for the nuts.

When installing swap mounts in 1994-2004 S10, you may have to use a 10mm x 1.5 thread tap to create threads in the unused holes, or drill and add nuts to the bottom side.

COMPATIBILITY INFORMATION:

When used with the related Hooker Blackheart transmission crossmember, these engine swap mounting brackets will replicate the factory engine/transmission inclination angle used in 1982-2004 GM S10 2-wheel drive applications.

These LS swap brackets will only work on 2-wheel drive applications.

This engine swap mounting bracket kit requires the use of a Holley LS Engine Swap Oil pan 302-1. The other variations do not fit and will interfere with the crossmember slightly.

More LS engine performance components, such as EFI fuel control systems, fuel filters, fuel pumps, plumbing hose/fittings and valve covers can be found at www.holley.com.

BEFORE BEGINNING:

Check that the hardware package includes the following:

Qty.	Description
6	M10 x 1.5 x 30 Bolts
6	M10 x 1.5 Flange Nuts

If you are missing any hardware, please contact Technical Service at 1-866-464-6553 or 270-781-9741.

INSTALLATION:

1. Detach the stock brake line hold-down clips that are attached to the frame directly behind the engine mount cradle and reposition the brake line as low on the cradle as possible.
2. Remove the factory engine mounts from the frame and clean the bracket mounting surfaces.
3. Attach the Hooker engine mounting brackets to the frame, leaving the (x6) mounting bolts loose so you can slide the mounts, as oriented in **Figure 1**, using the supplied M10 bolts/nuts.



Figure 1

4. Install new OE rubber or aftermarket polyurethane mounts on the LS engine to be installed.
5. Install the engine/transmission assembly onto the Hooker engine brackets and couple the engine mounts to the engine brackets using the user-sourced metric cap screws and flanged locking nuts.
6. Once the engine is sitting in the engine bay as it should, use a wrench to tighten the (x6) mounting bolts.
7. Raise the rear of the transmission as high as it will go and install the Hooker LS swap S10 transmission crossmember per the instructions included with its packaging.
8. Your LS swap engine and transmission are now mounted and ready to be outfitted with headers and an exhaust system. Hooker Blackheart LS S10 swap headers and dual exhaust systems are specifically designed for use with these engine mounting brackets.

LIMITATION OF LIABILITY – DISCLAIMER:

HOOKER™ makes no warranties of merchantability, of fitness for particular purpose, or that its products are approved for general use, or that its products comply with laws, regulations, or ordinances in the state where they may be sold to the ultimate purchaser, the consumer.

Unless expressly stated to the contrary in the catalog, instruction sheet; or price list, the entire risk as to the conformity of any company product in any such state and as to repair should the product prove to be defective or non-conforming, is on the retail purchaser, the buyer, the ultimate consumer, of such product and it is not upon the seller, distributor, or manufacturer.

In this connection, the retail purchaser, the buyer, the ultimate consumer assumes the burden of the entire cost of any and all necessary service, alterations, or repair.

© 2017 Hooker Headers, Inc. All rights reserved. Tous Droits Réservés.

199R11407

Revision Date: 1-9-24