



# OUTLAW S E R I E S

## Installation Instructions

# 817846

### 2019\*-2024, 2026 RAM 1500

### 5.7L HEMI ENGINE

### 2/4 Wheel Drive, All Wheelbases

With Factory Single or Dual Tailpipes

(\*Does Not fit 2019 Classic Body)

### OVERVIEW:

1. Take a moment to read and understand these instructions before installing your Flowmaster performance system.

**NOTE:** Please inventory all parts now before continuing and if necessary, report any missing items to our tech line. This will avoid potentially stranding your vehicle until any missing replacement parts arrive.

ITM #	PART #	DESCRIPTION	QTY.
1	815430-517	Muffler	1
N/A	PK963	Hardware Package includes:	1
2	MC300BS	3" Stainless Band Clamp	1
3	HW210	3/8"-16 x 1 1/2" Bolt	2
4	HW303	3/8" Flat Washer	4
5	HW309	3/8" Split Lock Washer	2
6	HW103	3/8"-16" Nut	2

### REMOVE STOCK COMPONENTS:

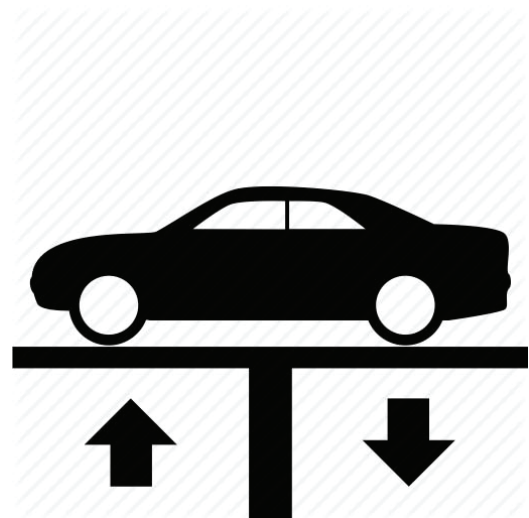
2. Raise vehicle up on a hoist or rack to working height. If you don't have access to a hoist or rack, support vehicle with jack stands.

**WARNING:**

Avoid serious burns! Allow your vehicle time to cool completely before touching any factory engine components.

**To ease preparation and installation of your new kit:**

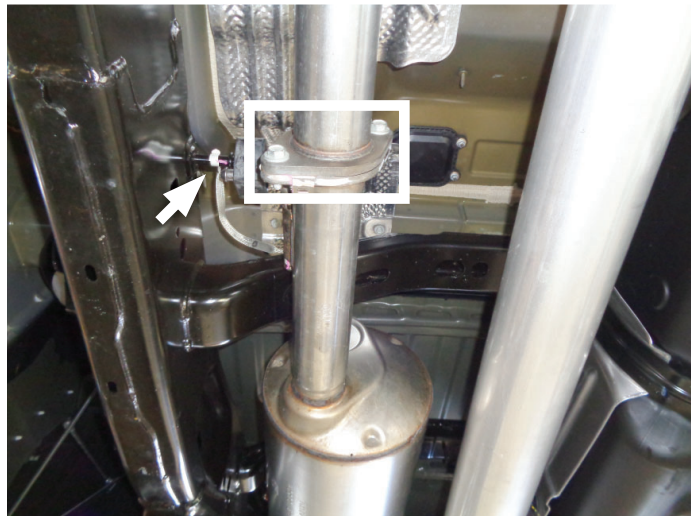
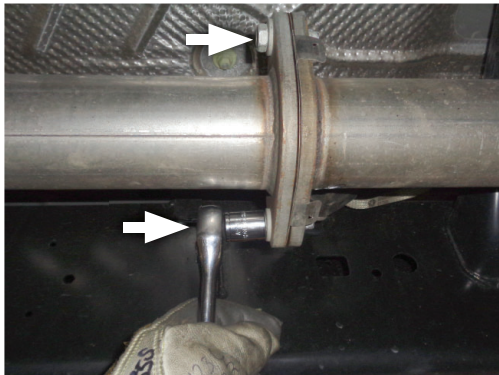
- Apply penetrating lubricant to mounts, bolts and clamps before you remove them.
- Use stands as necessary to support parts as you detach them from your vehicle and again as you install new parts.



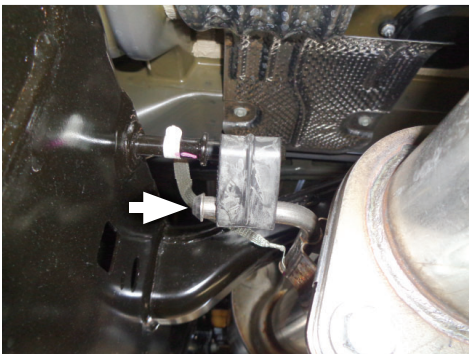
3. Mark line 1¼" back from factory muffler outlet. Then cut pipe to separate muffler. Deburr edges after cutting.



4. Remove bolts attaching muffler and front pipe. Remove grounding wire from muffler.



5. Remove muffler wire hangers from mounts, then remove cut out muffler section from factory exhaust system. Remove gasket from factory muffler inlet and retain for re-use.



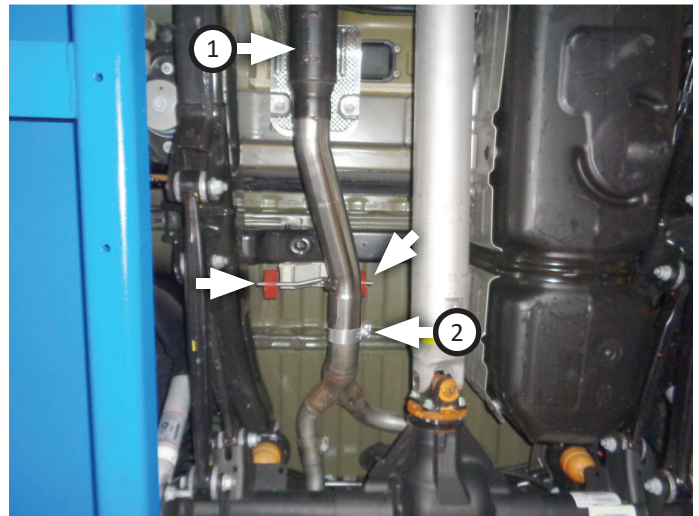
## INSTALL FLOWMASTER EXHAUST SYSTEM

- Remove nuts from stock and Flowmaster clamps, apply anti-seize compound to bolts and re-install nuts.

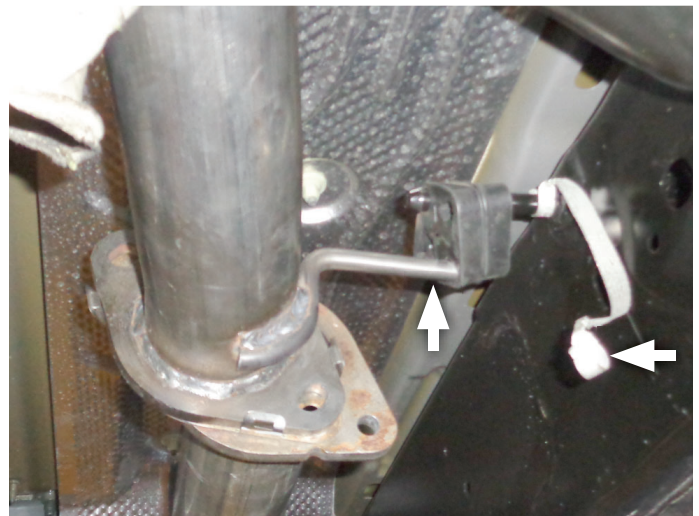
**NOTE:** The image in this step is intended for illustrative purposes only and may or may not accurately reflect components included in your kit.



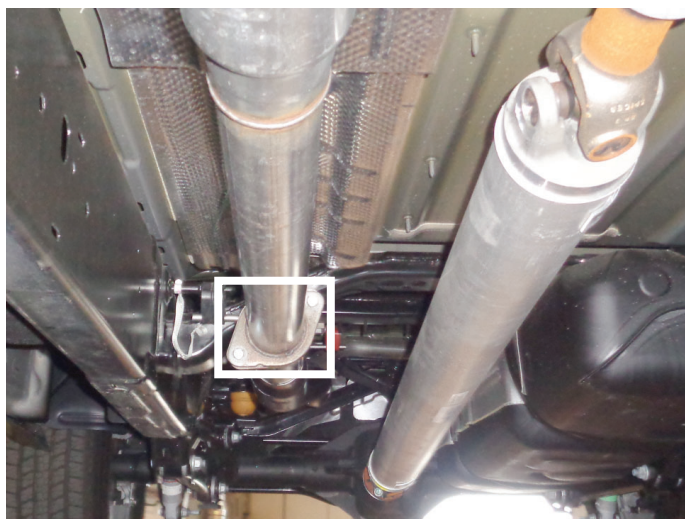
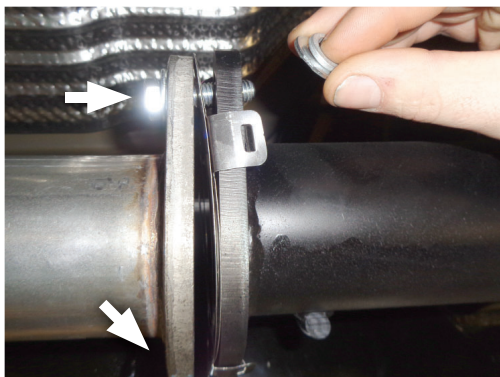
- Place **clamp (2)** onto **muffler (1)**. Push wire hangers on muffler into rubber isolators and connect to factory tailpipe inlet. Tighten clamp just enough to allow for adjustment.



- Place gasket (removed step 5) between muffler and factory pipe, then hang muffler wire hanger into rubber isolator. Connect grounding wire to muffler.



9. Secure flange with **bolt (3)**, (x2) **flat washers (4)**, **split lock washers (5)** and **nut (6)** through each hole.



10. Adjust muffler for fit; maintaining  $\frac{1}{2}$ " clearance and compensating for suspension, travel and vibration then tighten all clamps.  
11. Recommended: Secure slip-fit connections with a 1-inch tack weld then spray high-temp paint over each weld to prevent rust and premature corrosion.



Congratulations, the installation of your FLOWMASTER performance exhaust system is now complete!





# OUTLAW<sup>®</sup>

S E R I E S

Installation Diagram  
**817846**  
2019\*-2024, 2026 RAM 1500  
5.7L HEMI ENGINE  
2/4 Wheel Drive, All Wheelbases  
With Factory Single or Dual Tailpipes  
(\*Does Not fit 2019 Classic Body)

