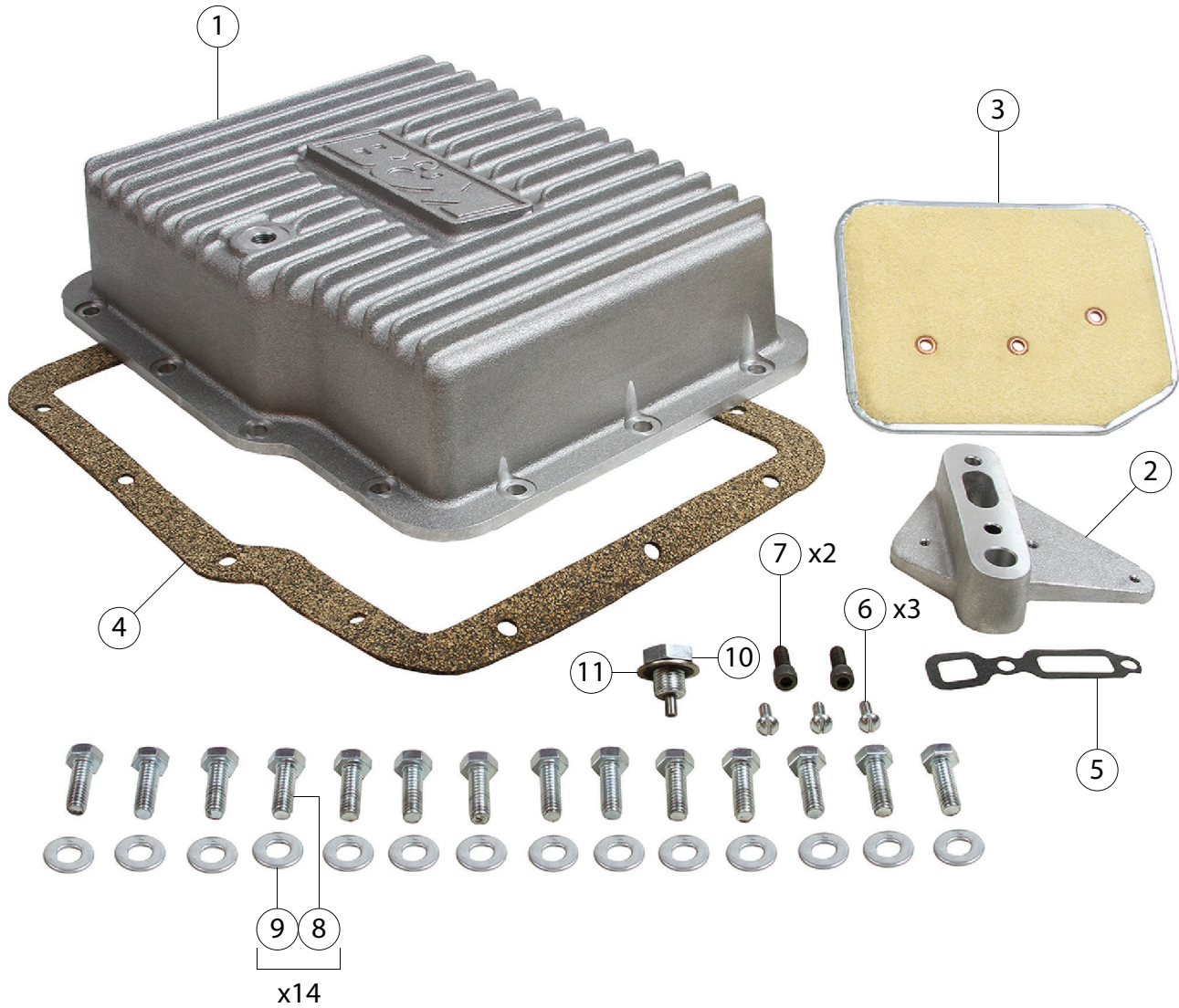




Installation Instructions
70280
 GM POWERGLIDE
 AUTOMATIC TRANSMISSION



ITEM	PART #	DESCRIPTION	QTY.
1	1600617-06	Deep Pan	1
2	1600643-06	Adapter	1
3	1000112	Filter	1
4	1600001	Pan Gasket	1
5	1600002	Adapter Gasket	1
N/A	6160001	Hardware Package includes:	1

ITEM	PART #	DESCRIPTION	QTY.
6	3400020	10-24 x 1/2" Screw	3
7	3400373	1/4-20 x .625 Screw	2
8	3400288	5/16-18 x 7/8" Bolt	14
9	3400079	5/16" Flat Washer	14
10	3401109	1/2-20 Drain Plug Bolt	1
11	3401110	Drain Plug Gasket	1

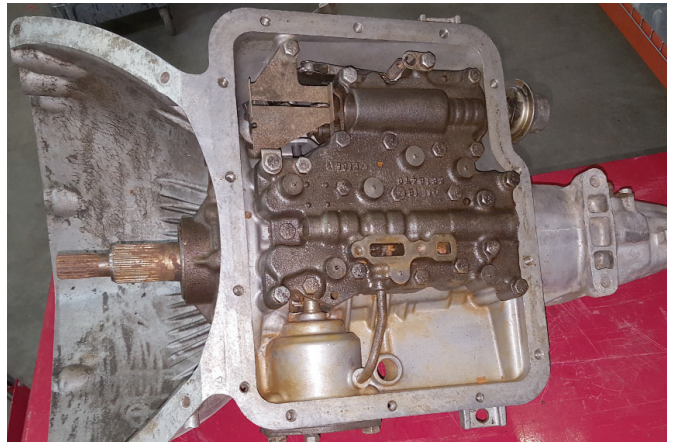
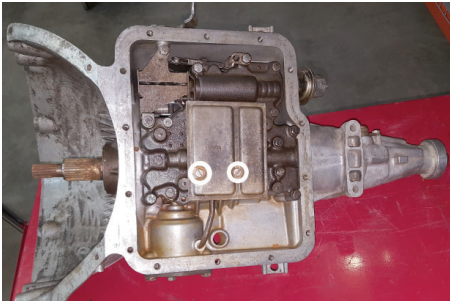
OVERVIEW:

1. B&M Deep Oil pans provide several advantages over the stock factory oil pan.
 - Extra capacity ensures a large volume of oil for the transmission oil pump, preventing oil pick-up starvation and added cooling.
 - The drain plug feature allows regular transmission maintenance and oil changes without the usual mess of removing the oil pan.
 - Special steel oil pans provide the above features with a minimum weight increase in a chrome plated stamped steel pan.
 - Aluminum oil pans have the added feature of additional cooling from inner and outer fins and providing improved case rigidity.
2. Recommended: For superior heat capacity, lubrication and friction material performance, purchase B&M Trick Shift ATF to fill your deep pan after installation.
3. Before beginning, inventory all parts and if necessary, report any missing items to our tech line. This kit can be installed in a few hours by carefully following directions.
4. Automatic transmissions operate at temperatures between 150° and 250° Farenheit, allow vehicle to cool for a few hours to avoid burns from hot oil and engine components.
5. Raise vehicle up on a hoist or rack to working height. If you don't have access to a hoist or rack, support vehicle with jack stands. Also have a smallbox or pan handy to put bolts in so they won't be lost as well as a drain pan to catch oil.

PREPARE VEHICLE FOR INSTALLATION:

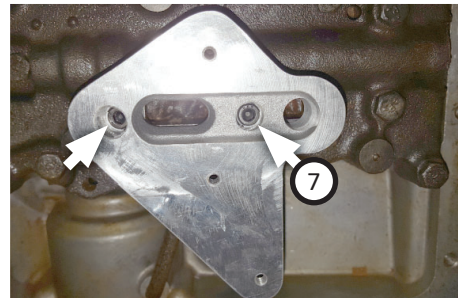
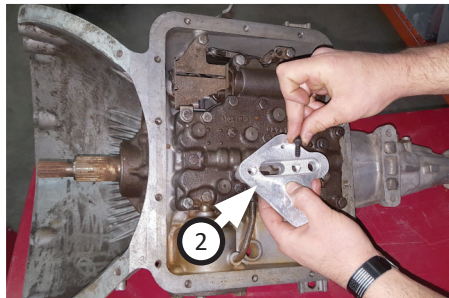
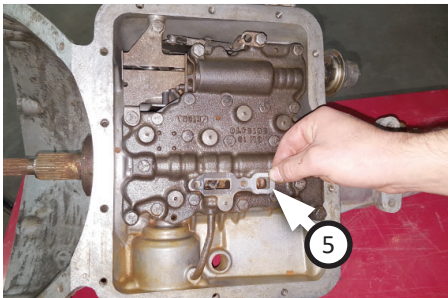
NOTE: Some vehicles will require removal of crossmember to remove pan.

6. Drain oil pan. Loosen and remove oil pan bolts one at a time, working toward the front of the transmission. Make sure you support the back of the transmission so you won't damage the distributor. Remove last two bolts slowly and the pan will tilt down to allow the last of the fluid to drain. If the pan sticks to the old gasket, pry it down slightly with a screwdriver before removing last two bolts, to break seal. After the last bolt is removed, lower pan and set aside.
7. The oil filter will now be exposed. Remove (x2) screws, oil filter and filter gasket then clean filter mounting surface.



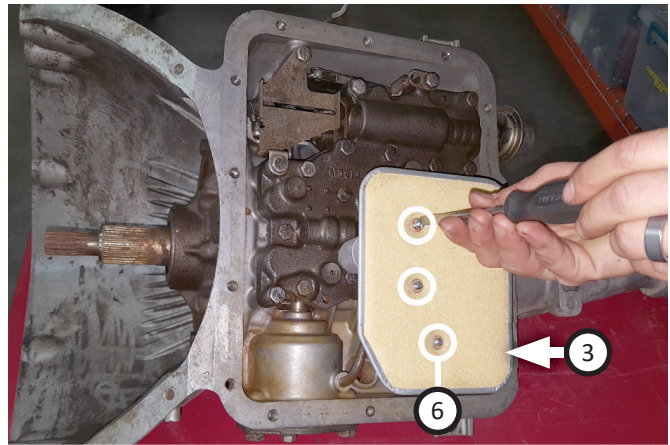
INSTALL B&M TRANSMISSION PAN:

8. Place **adapter gasket (5)** into position on valve body, then set **adapter (2)** on top, aligning holes. Fasten them together with (x2) **screws (7)**.

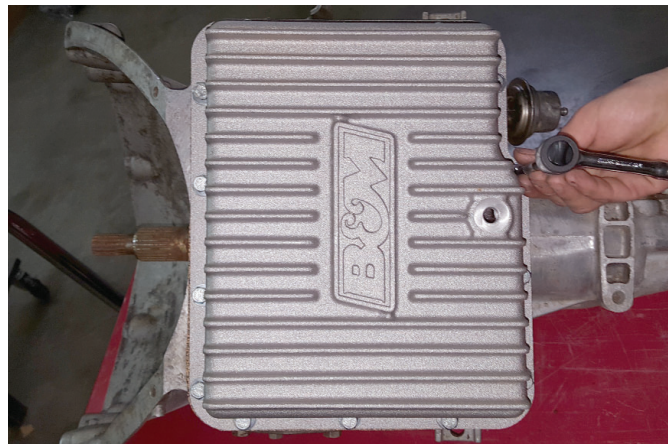


9. Install **filter (3)** to adapter using (x3) **screws (6)** and tighten securely.

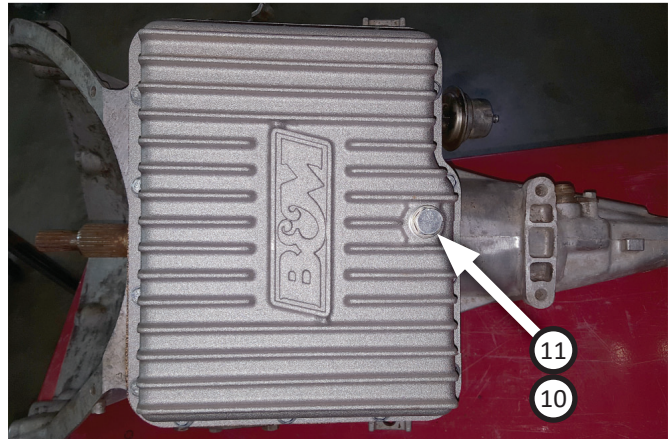
NOTE: One hole will be blocked by B&M filter with NO affect on functionality.



10. Scrape old gasket material off surface of case, then set **pan gasket (4)** and **deep pan (1)** onto transmission. Fasten them using (x14 ea.) **bolts (8)** and **flat washers (9)** tightened to 12-13 ft-lbs.



11. Install **drain plug gasket (11)** and **drain plug bolt (10)** into deep pan, tightened to 20-25 ft-lbs.



12. Lower vehicle but keep rear wheels off ground and add 3-4 quarts of B&M Trick Shift ATF.

CAUTION:

As you add ATF, do NOT overfill pan, which causes foaming and overheating. When fluid is full, check for leaks.

13. Start and run engine until it is up to temperature. Place shifter in Neutral position then add fluid until level is between Add and Full marks. Shift through all gear positions several times, place selector in **Neutral** and check fluid level. Top it off as necessary.

Congratulations, the installation of your B&M Deep Oil Pan is now complete!

