

# 8000MRG OPERATION MANUAL

## BATTERY OPERATED FUEL TRANSFER PUMP

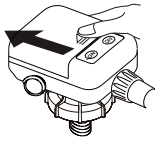
SEE SAFETY INSTRUCTIONS  
ON OTHER SIDE

### HOW TO PLACE THE BATTERIES

Insert 4 AA batteries according to + and - signs

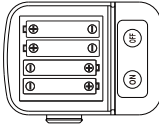
#### ● How to open the battery cover

Place thumb in grooves as shown in picture, push and slide the cover off in the direction of the arrow



#### ● Direction of Batteries as indicated in below picture

\*Replace all 4 batteries at the same time

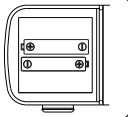


\*Use the same brand/type of batteries

#### EMERGENCY CASES WHEN ALL (4) BATTERIES ARE NOT AVAILABLE

It is recommended to use all 4 AA batteries when you are able, but it is possible to operate with 2 AA batteries during emergencies.

\*Can pump out approximately 50 x 5 gallon fuel cans using 4 batteries and with 2 batteries can pump out approximately 25 x 5 gallon fuel cans.



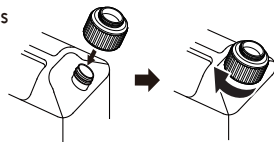
#### WHEN TO REPLACE THE BATTERIES

- Motor does not operate, even after pressing ON switch or transfer rate becomes slower than in normal operation.
- Batteries can begin to discharge if they are stored for a long period of time. Check the expiration dates of batteries.

### HOW TO USE

- 1 Make sure utility jug adapter is fastened tightly to your supply tank.

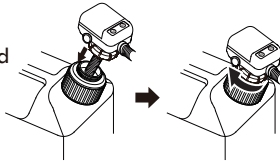
Utility jug adapter



- 2 Insert intake hose through the adapter and fasten the pump's universal threaded adapter tightly.



\*Do not lift up or push down the pump while it is attached to the fuel tank.

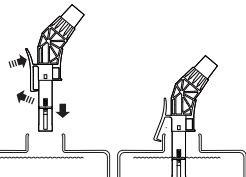


Use the universal threaded adapter without the utility jug adapter to fasten the pump to most North American 5 gallon and smaller fuel cans



- 3 Attach the discharge hose to your receiving tank using the clip, make sure the discharge nozzle is in a vertical position.

Receiving tank



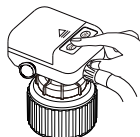
\*Make sure that the supplying tank and receiving tank are on the same level when pump is operating.

\*For tanks which are not fixed with the clip, make sure the discharge nozzle is vertical to the liquid level.

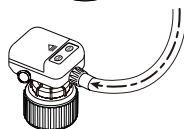
- 4 Start the flow of fuel by pressing the ON button.



\*Automatically stops when the fuel reaches the stop line.



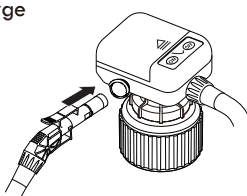
- 5 After automatically stopping, bring the discharge hose up above the tank to drain the excess fuel or liquid back into the supply tank.



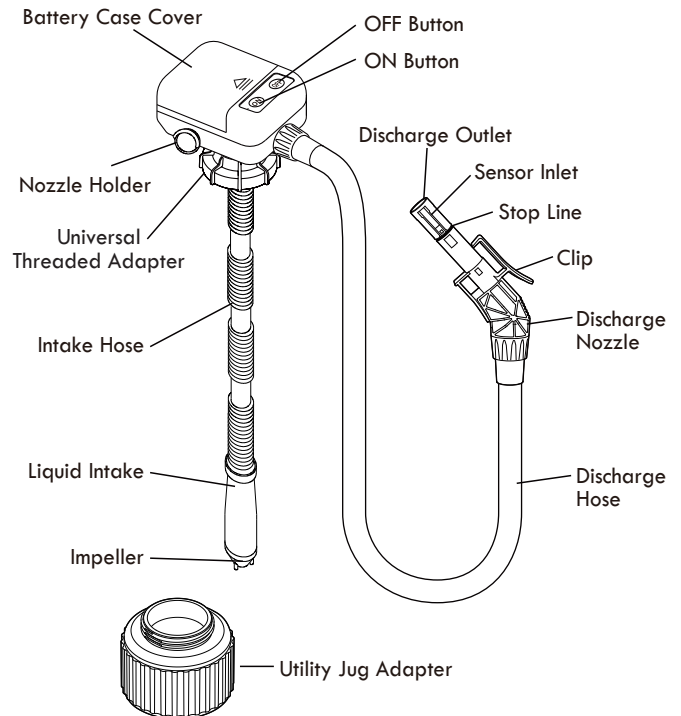
- 6 Put the discharge nozzle in discharge nozzle compartment and lock into place with clip.



\*Place the discharge nozzle into discharge nozzle compartment properly after fueling. In the event the fuel tank falls over, and the discharge hose is not in its storage hole, liquid can leak out.



### DIAGRAM OF PART



### HOW TO STORE

- When the pump is not being used for long periods of time, take the pump out of the tank, make sure no remaining fuel is in the hose, and wipe it down with a cloth before storing it.
- Make sure to take the batteries out before storing the pump.
- Do not store pump in enclosed airtight container.

### PRODUCT SPECIFICATIONS

Model	8000MRG	Major materials:	Polypropylene, Polyethylene, Polyacetal
Battery:	AAx4 (not included)	Operating temperature:	Approx. 5°C to 40°C (41°F ~ 104°F)
Flux:	About 2.5 GPM (9.5 LPM)	Compatible liquids:	Gasoline, Kerosene, Diesel, Non-potable water
*Flow rate is based on pumping gasoline with DC 3V 3A without any elevation			
Electrical Supply:	3VDC, 3A	Pollution degree:	2
Altitude:	2000 m	Installation category:	1

**Duty Cycle: 5 minutes run 10 minutes rest**

Thank you for your purchase of the 8000MRG. Please read this manual carefully to ensure proper use. Do not leave this pump unattended while in operation.



# 8000MRG OPERATION MANUAL

NOT FOR DRINKING WATER

## BATTERY OPERATED FUEL TRANSFER PUMP

### SAFETY INSTRUCTIONS

⊘ DO NOT DO THIS

❗ YOU MUST DO THIS

- ⊘ Do not transfer fuel while vehicle or the vehicle's heater is ON (may cause a fire).
- ⊘ Do not leave the pump unattended (may cause oversupply of oil, a fire or any accident).
- ⊘ Do not alter or disassemble the pump (may cause failure of the product or an accident).
- ⊘ Do not place the pump in a wet area (may cause failure of the product or an accident).
- ⊘ Do not use deteriorated or aged fuels (these may cause our product to fail).
- ⊘ Do not use for drinkable liquid, thinner, solvent, acetone, benzene, cresol, ethanol, methanol, phenol, concentrated caustic soda liquid, nitric acid, hydrochloric acid, sulfuric acid, etc.
- ⊘ Do not shock the pump (may cause a failure or damage of the product).
- ⊘ Do not put the product in a vehicle with all windows closed, direct sunlight area, or next to any heating appliances (may cause an accident or transform the product).
- ⊘ Do not run the pump 'dry' or let the pump idle without transferring (may cause failure of product).
- ⊘ Do not close the hole of sensor inlet. Do not supply the oil into transparent vessel under direct sunlight (may not stop automatically and overflow of liquid).
- ⊘ Do not allow children to operate the product without adult supervision.
- ⊘ Do not use the product on carpet, wood floor or combustible area (may cause a fire). Be careful not to damage the floor surface and/or carpet by fuel leakage.

**WARNING: IMPROPER USE CAN CAUSE A DEATH OR SERIOUS INJURY**



**WARNING: IF THE EQUIPMENT IS USED IN A MANNER NOT SPECIFIED BY THE MANUFACTURER, A FIRE HAZARD MAY BE CAUSED**



- ❗ Make sure to use the pump on even surface  
(If the tank falls down during the liquid supply, liquid will leak and may cause a fire or an accident)
- ❗ Make sure the pump is tightly secured to the tank before turning the pump on.
- ❗ Make sure the sensor on the discharge nozzle is vertical (may not stop automatically, could cause fuel to overflow).
- ❗ Make sure to press the OFF switch after each use of the pump (may cause the continual consumption of battery and leak of liquid which will cause malfunction of the product).
- ❗ Make sure remove any left-over fuel in the pump after each use (may cause of failure of the pump if fuel remains around the sensor).
- ❗ Make sure to detach the tank from the pump when moving and when storing the tank (may cause leak of fuel if moved while the tank is attached).

### CAUSE OF FAILURE AND TREATMENT

SYMPTOM	CAUSE	TREATMENT
Pump does not operate even after pressing ON	<ul style="list-style-type: none"><li>· Batteries may be incorrectly placed</li><li>· Batteries are depleted</li><li>· Impeller is stuck</li></ul>	<ul style="list-style-type: none"><li>Ensure the batteries are placed in the pump correctly</li><li>Replace the batteries</li><li>Turn the impeller manually</li></ul>
Pumps performance is low	<ul style="list-style-type: none"><li>· Battery terminals are rusted</li><li>· Batteries are depleted</li></ul>	<ul style="list-style-type: none"><li>Clean the rust from battery terminals</li><li>Replace the batteries</li></ul>
Pump starts after pressing ON button but then stops unexpectedly	<ul style="list-style-type: none"><li>· Elevation of receiving tank is higher than supplying tank</li><li>· Filter of receiving tank may be blocked with foreign material</li></ul>	<ul style="list-style-type: none"><li>Make sure that the receiving tank is not elevated above the supply tank</li><li>Clean foreign material from the filter</li></ul>
Pump immediately stops after pressing the ON button	<ul style="list-style-type: none"><li>· Batteries are depleted</li></ul>	<ul style="list-style-type: none"><li>Replace the batteries</li></ul>
Motor stops before receptacle tank is full	<ul style="list-style-type: none"><li>· Batteries are depleted</li><li>· Sensor is too low and is touching the liquid</li></ul>	<ul style="list-style-type: none"><li>Replace the batteries</li><li>Adjust the discharge nozzle up so that the sensor is closer to the top of the supply tank</li></ul>

Our company shall not take any responsibility for any failure of product, malfunction and damages caused by improper use by user or third parties.



1801 Russellville  
Road, Bowling  
Green, KY 42101  
www.holley.com

Mr. Gasket  
1-866-464-6553



Made in Korea