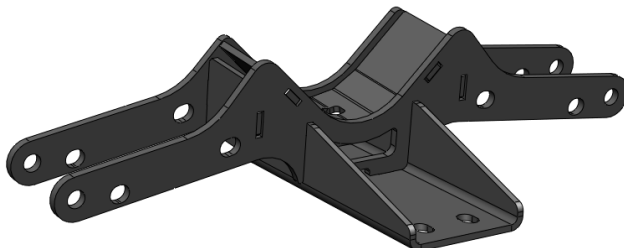




**1970-1974 E-Body Mopar, GEN III Hemi Swap,  
w/ Tremec TKX 5-Speed Transmission Crossmember  
BHS5176**



**Installation Instructions**

Thank you for choosing to use HOOKER™ engine swap mounting brackets as part of your GEN3 HEMI Swap project. These mounting brackets are part of the most comprehensively engineered system of mounting components, headers, and exhaust systems available for this application. Please read these instructions thoroughly before attempting installation.

Visit [www.holley.com](http://www.holley.com) for a complete selection of Transmission Crossmember, Headers, Exhaust, and more GEN3 HEMI support products to complete your Gen 3 Hemi Swap.

**COMPATIBILITY INFORMATION:**

**70-74 E-Body Mopar cars using GEN3 HEMI engines, installing the following transmission and using the listed supporting parts**

**Tremec (GM) TKX 5 Speed Transmission:**

- Transmission Mount – P/N: 71223029HKR
- Engine Mounting Brackets – P/N: BHS566
- Bell Housing P/N: LK7200
- Offset Shifter P/N: 3911021
- Die Formed Tunnel Patch P/N: BHC308

**Install Notes:**

- Requires Hydraulic Clutch Conversion

**Recommended parts**

- Flywheel P/N:11-500
- Clutch Kit P/N: 91-304 (UP TO 450 HP)

**PARTS LIST:**

Qty.	Description
1	Transmission Adapter Plate

**ACCESSORY PACK CONTENTS:**

2		3/8-16 x 3.5" Flange Bolt
2		3/8-16 Flange Nut
2		7/16 Flange Nut
2		M10 x 1.50 x 30mm Flange Bolt
2	599R94	Decal – Blackheart 2" x 4"
1	199R12241	Instruction Sheet

Check the hardware package. If anything is missing, please contact Technical Service at 1-866-464-6553 or 270-781-9741.

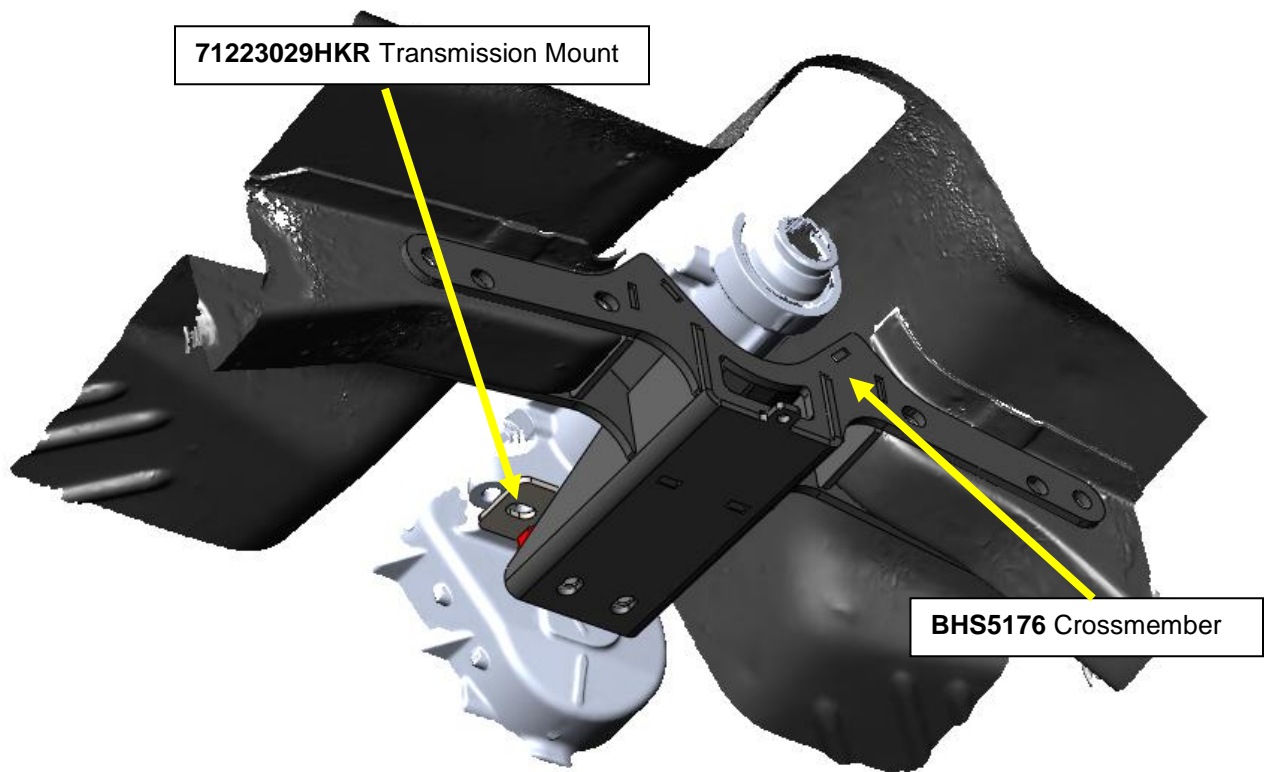
## TOOLS NEEDED:

3/8" Socket Set
11/16 Wrench
5/8 Wrench
15mm Socket
3/4" Socket

## INSTALLATION:

These instructions assume the engine and transmission are installed.

1. Install the **71223029HKR** transmission mount (sold separately) to the transmission tail shaft mounting boss with the supplied M10-1.50 x 30mm flange bolt.
2. Install the **BHS5176** crossmember and align the studs of the transmission mount while raising the transmission crossmember into position. Align the bolt holes and install the provided 3/8 x 3.5" bolts. Install the provided flange nuts and tighten. Align the transmission to center. Install the 7/16-14 flange nuts onto the transmission mount studs and tighten.



Any questions? Please contact Technical Service: 1-866-464-6553 or 270-781-9741. For online help, please refer to: [www.holley.com](http://www.holley.com).

© 2022 Hooker Headers, Inc. All rights reserved. Tous Droits Réservés.

**199R12241**

**Revision Date: 3-23-22**