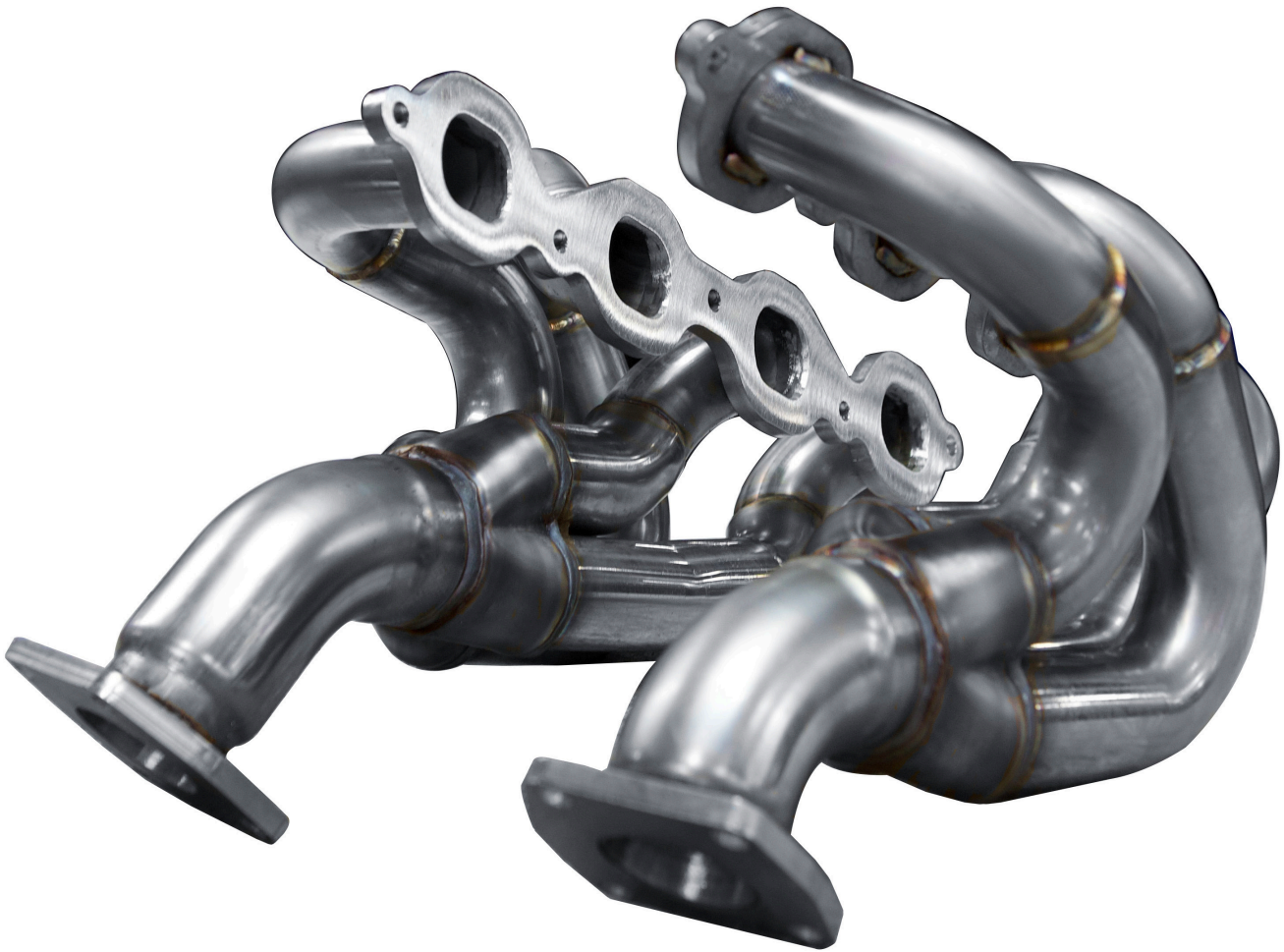




Installation Instructions
2016+ Chevrolet Camaro 6.2L
Super Street Headers #22601300

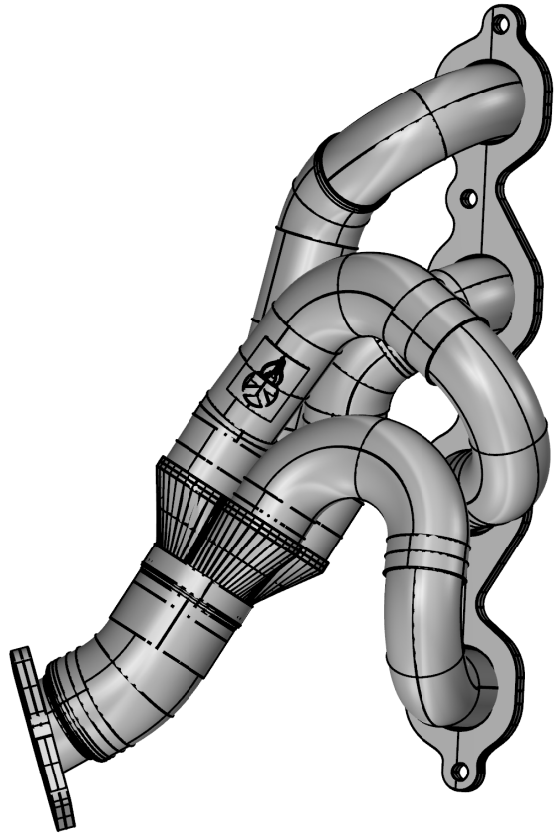


Thank you for your purchase, we appreciate your business.
If additional assistance is needed, please contact Kooks Headers and Exhaust
Toll free at 1-866-586-KOOK or contact your local dealer.

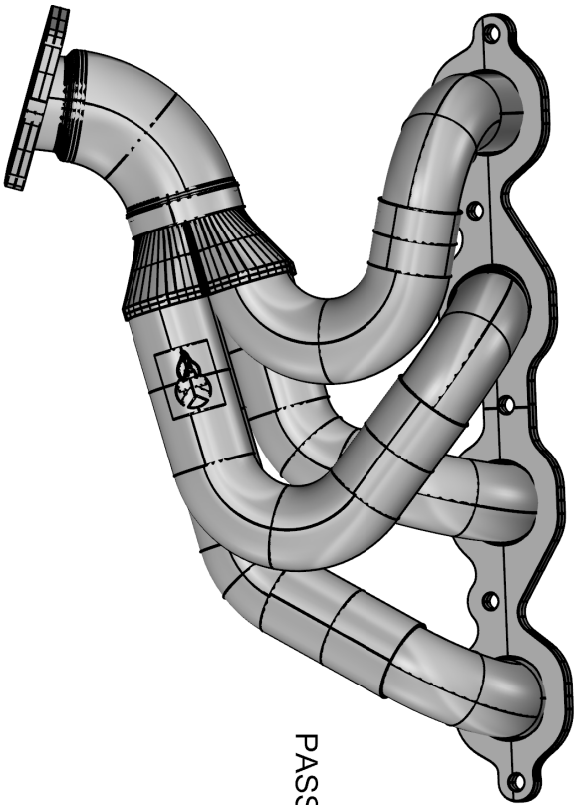
- System Layout -

Components to Ship With -

- 1) 755897 - head gasket
- 1) SB-B60073 - header bolts
- 1) SB-B60075 - exhaust bolts, misc bolts
- 3) K60763 - coolant tank spacer



DRIVER SIDE



PASSENGER SIDE

22601300

1 3/4" x 1 7/8" Super
Street Series Header

2016+ Camaro 6.2L



Do not attempt this installation if proper safety equipment is not available to you - seek the assistance of a professional installer

Read and understand all instructions before beginning

Vehicle Preparation

****Raise and Support Vehicle (Refer to Owner's Manual for specified jacking points) ****

Always disconnect the battery before performing this type of work on any vehicle

2 Post Lift Recommended

KOOKS Installation (OEM parts removal)

- Raise vehicle to a height that make accessing all exhaust components possible.
- **From underside:**
- Remove shear plate and other covers.
- Loosen the 13mm nuts and bolts that hold the cross brace in place.
- Remove 15mm nuts from driver side and passenger side mounting flanges from exhaust manifold to catted down pipe.
- Remove the 8mm bolts from the steering shaft connecting rod. Push top section up and bottom section down to seperate.
- Lower vehicle down.
- **From topside:**
- Unplug the wiring harness from the mass air sensor.
- Disconnect the sound tube from the air box mounting point.
- Loosen clamp at air box inlet. Remove air box by pulling it upwards releasing it from the rubber grommets holding it in place.
- On **passenger side** remove the 10mm bolts that hold the upper portion of the heat shield to the exhaust manifold and remove heat shield.
- Remove and plug coolant line to top front of coolant overflow tank, and cap inlet on overflow tank.
- Loosen hold down nuts on overflow coolant tank and swing up and back toward the cowl.
- Remove spark plug wires from the coil packs and spark plugs.

(continued....)



OEM parts removal continued...

- Remove dipstick and dipstick tube.
- Remove the 5-bolts that hold the stock manifold to cylinder head.
- Remove exhaust manifold and gasket from top side.
- On **drivers side** remove hold down nut for A/C Lines and pull bracket off stud. Move lines out of the way, toward fender.
- Remove the 5-bolts that hold the stock manifold to cylinder head.
- Remove exhaust manifold and gaskets from the top side.

KOOKS - Super Street Headers Installation

- Clean all gasket mating surfaces on heads and downpipes.
- **Passenger Side**
- Put Header and gasket in from Top side (dipstick tube needs to go through header when it is in the engine bay but, before it is bolted to the head).
- Connect OEM Cat to collector outlet of header.
- Re-install Spark plugs, Spark plug wires and coil covers.
- Torque everything.
- Install included spacers on studs for coolant overflow tank. Re-install overflow tank and re-connect hose. - **See FIG.1**
- **Drivers Side**
- Replace the factory bolt on block to supplied M10x1.5-25 button head. - **See Fig.2**
- Put Header and gasket in from Top side.
- Reconnect steering shaft with supplied M8x1.25-30mm button head + lock washer. - **See Fig.3**
- Connect OEM Cat to collector outlet of header.
- Re-install Spark plugs, Spark plug wires and coil covers.
- Torque everything.
- Put A/C lines back in place.
- Re-install air box and other related components.
- Tighten cross brace nuts and bolts.

----- Start engine and heat cycle -----

- Re-torque all fasteners.
- Lift vehicle and re-install shear plate and all under car covers.

Installation Complete - Enjoy!

**Thank you for your purchase, we appreciate your business.
If additional assistance is needed, please contact Kooks Headers and Exhaust
Toll free at 1-866-586-KOOK or contact your local dealer.**

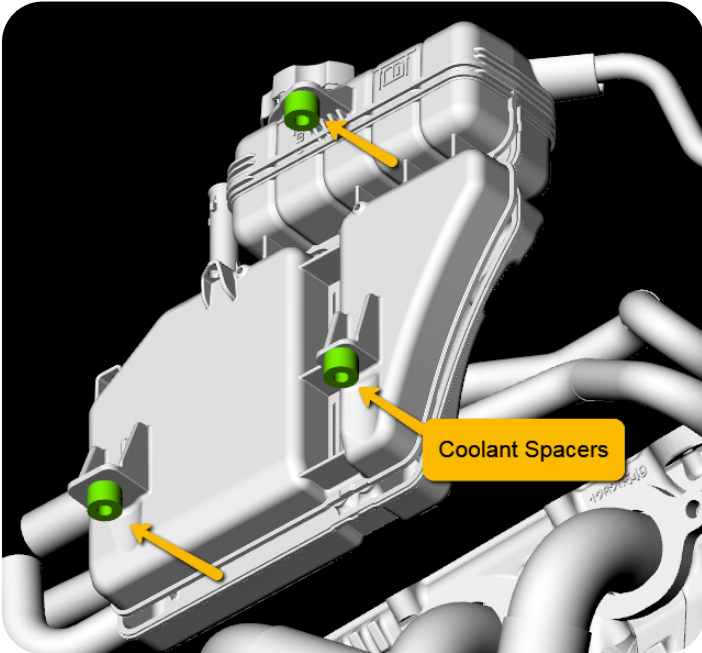


Figure.1

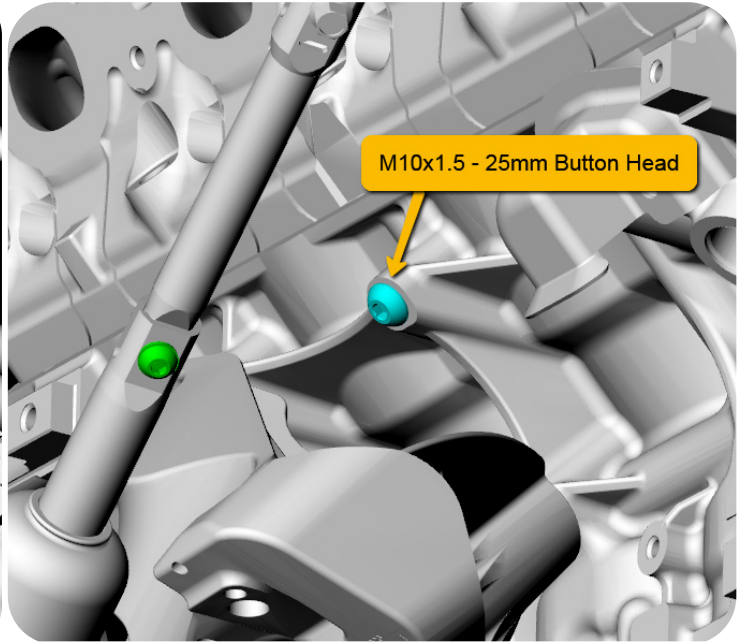


Figure.2

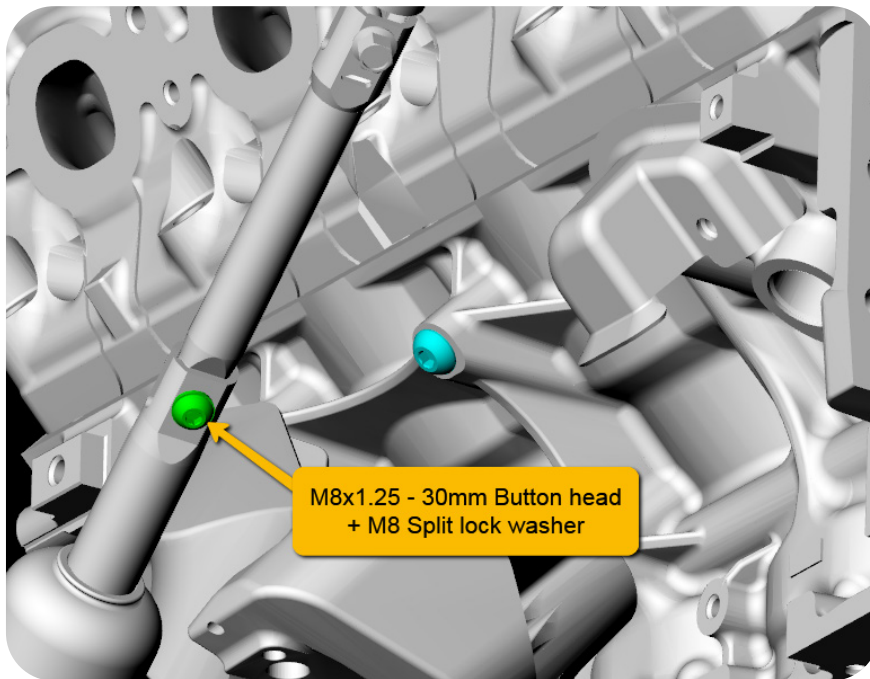


Figure.3