

# Instructions

## Body Mount Bushings

**N.B:** This instruction sheet should be used in conjunction with the workshop manual and proper safety procedures followed.

Page 1 of 2

**Application** - Chev Bel Air  
- 1955-57

(Refer current catalogue for complete listing)

Note: Any rusted nuts or bolts will require lubricant prior to disassemble.

When removing each mount, be sure to note each location on vehicle. Also, any existing shims will need to be re-used in their respective point

- Loosen all bolts on both sides of vehicle initially.

**Contents** - Bushing 91283 x12  
- Bushing 91284 x16  
- Bushing 91285 x2

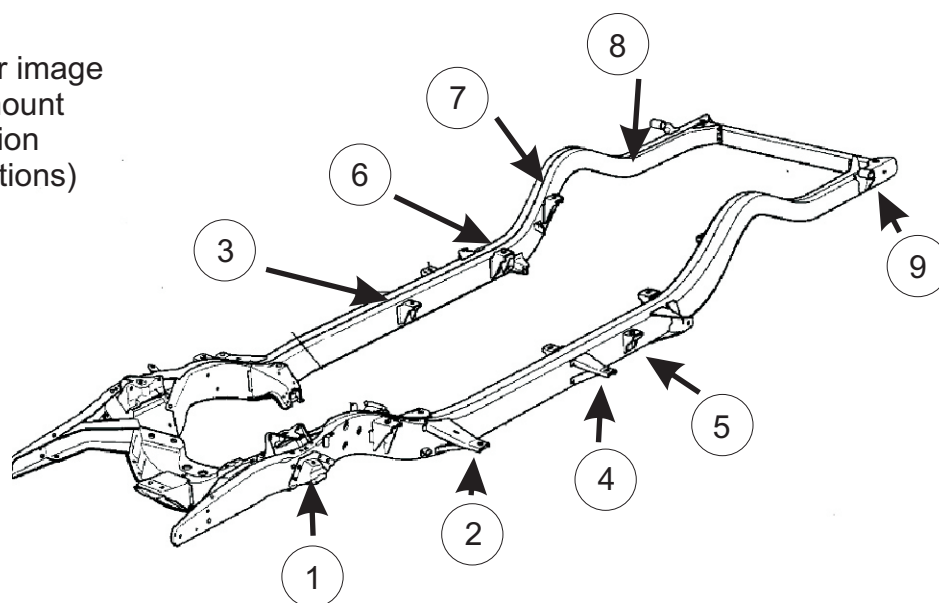
- Washer 50x10x3 x14  
- Washer 63x10x3 x12

- Steel tube 22x19x27 x14  
- Steel plates x2

**Be careful of fan shroud and other components while lifting.  
A hydraulic jack and timber may be used to lift the body.**

- Proceed by replacing mounts from 1 side of vehicle at a time.
- Replace 1 mount at a time, but do not tighten bolts yet - note diagram on page 2 for bushing position.
- Once all mounts are replaced, confirm body is straight/aligned - tighten all nuts to Manufacturers specifications.
- It is recommended all hardware is re-checked after 500kms travelled.

Refer image for mount location (positions)



**N.B:** It is recommended that a licenced workshop or tradesperson carry out the above procedure and that workshop manual and relevant safety procedures are followed in addition to the above.

# Instructions Body Mount Bushings

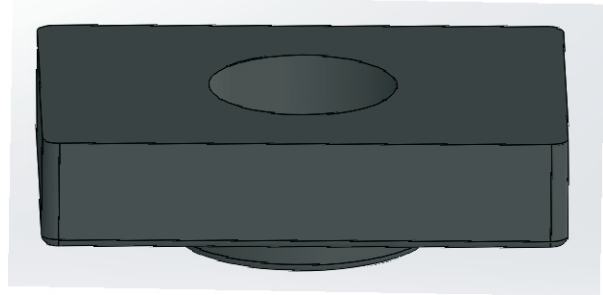
Continued - Page 2 of 2

## Position #1

- Use original bolts.
- Use supplied steel tubes

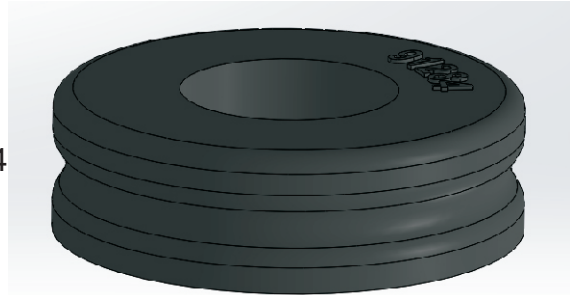
Steel plate → 


Bushing 91285




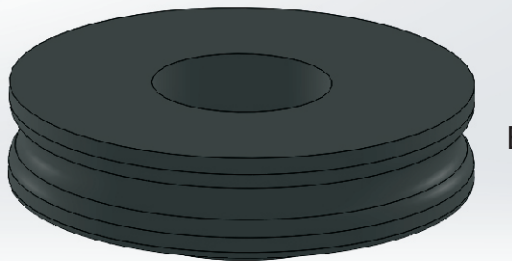
Chassis → 

Bushing 91284



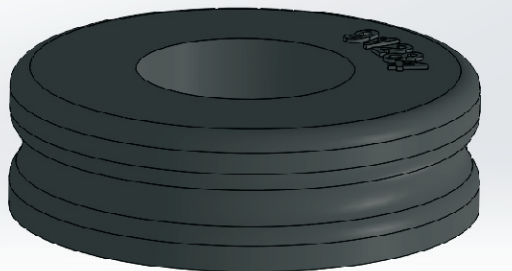
Washer 50x10x3 → 

 ← Washer 63x10x3



Bushing 91283

 ← Chassis



Bushing 91284

 ← Washer 50x10x3

## Position #2/3/4/5/6/7/8/9

- Re-use original bolts
- Note - position #5 relates to 2-door only.
- Note - positions #8 relates to Station Wagon only.

N.B: It is recommended that a licenced workshop or tradesperson carry out the above procedure and that workshop manual and relevant safety procedures are followed in addition to the above.