

Instructions

Body Mount Bushings

N.B: This instruction sheet should be used in conjunction with the workshop manual and proper safety procedures followed.

Page 1 of 3

Note: Any rusted nuts or bolts will require lubricant prior (and maybe wire brush) to disassemble.

When removing each mount, be sure to note each location on vehicle. Also, any existing shims will need to be re-used in their respective point

- Loosen all bolts on both sides of vehicle initially.

Be careful of fan shroud and other components while lifting. A hydraulic jack and timber may be used to lift the body.

- Proceed by replacing mounts from 1 side of vehicle at a time. Note - new bolts are supplied.
- Replace 1 mount at a time, but do not tighten new bolts yet - note image below and diagram on page 2 and 3 for bushing position.

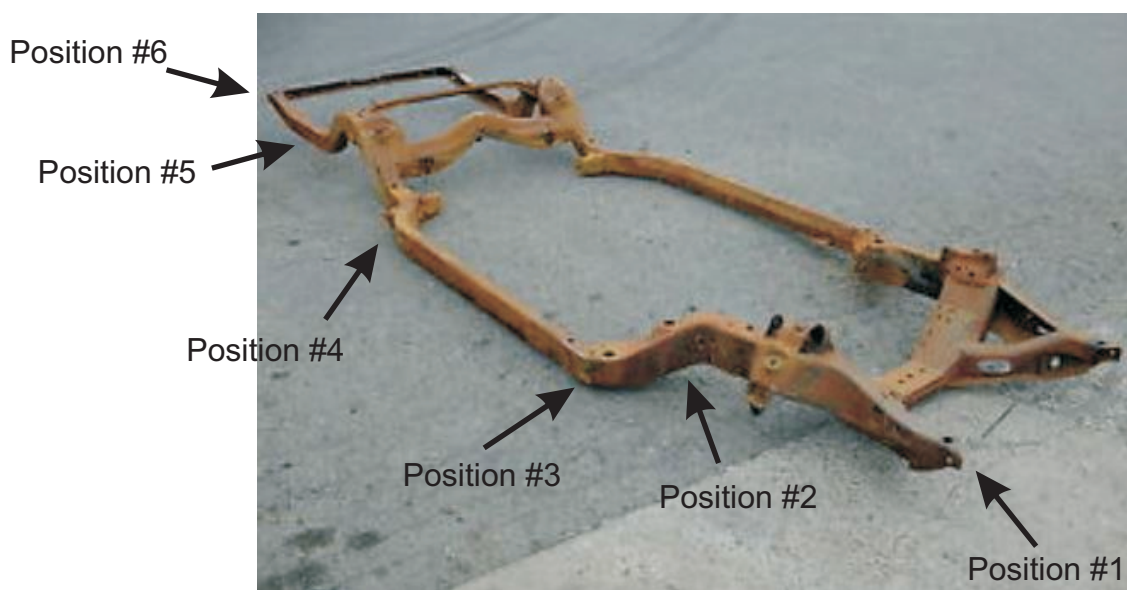
Application - Chev Impala
- 1965-1970

(Refer current catalogue for complete listing)

Contents - Bushing 90190 x4
- Bushing 90309 x6
- Bushing 90674 x2
- Bushing 91404 x2
- Bushing 91492 x2
- Bushing 91493 x2
- Bushing 91495 x2
- Bushing 91496 x2

- Steel tube 22.2x19.2x38.5 x6
- Steel tube 22.2x19.2x35 x2
- Steel tube 19x16.2x25.5 x2

- Steel washer 45mm OD x2
- Steel washer 50mm OD x12
- Steel washer 63mm OD x4
- Cut washers x2



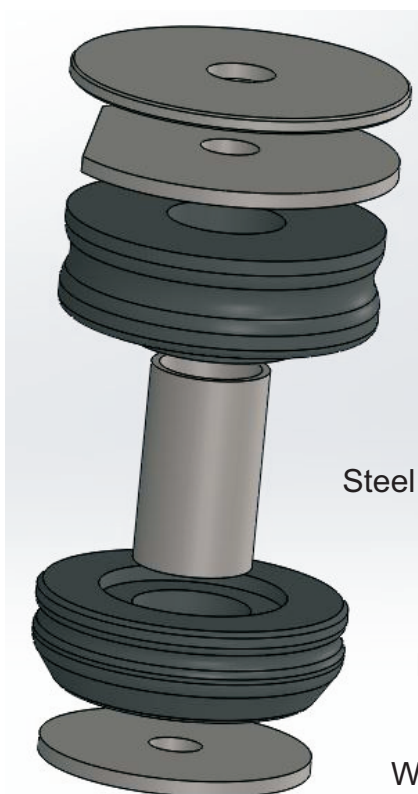
N.B: It is recommended that a licenced workshop or tradesperson carry out the above procedure and that workshop manual and relevant safety procedures are followed in addition to the above.

Instructions

Body Mount Bushings

Continued - page 2 of 3

Position #1 Radiator Support



Position #2

N.B: It is recommended that a licenced workshop or tradesperson carry out the above procedure and that workshop manual and relevant safety procedures are followed in addition to the above.

Instructions

Body Mount Bushings

Continued - page 3 of 3

For position #3, use bushing 91496. No further hardware required.

Position #4 and #5

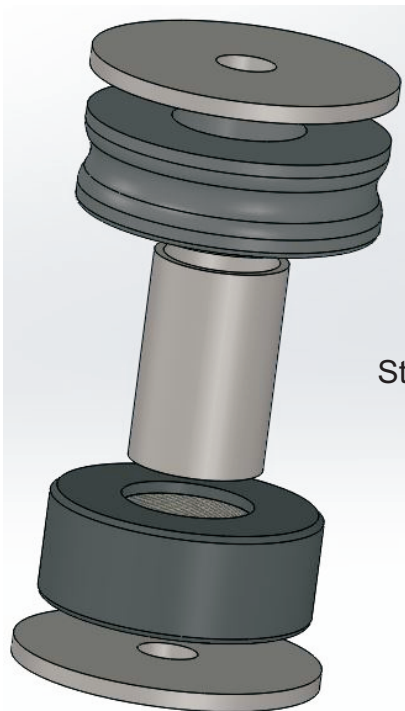
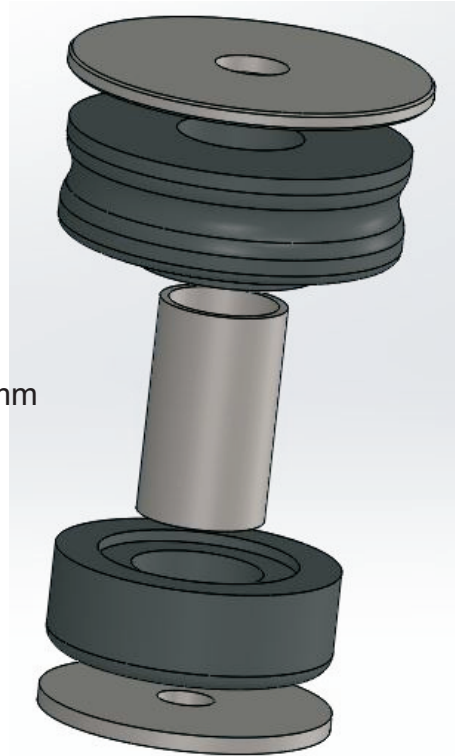
Washer 63mm OD

Bushing 90309

Steel tube 22.2x19x38mm

Bushing 90190

Washer 50mm OD



Washer 50mm OD

Bushing 90674

Steel tube 22.2x19.2x35mm

Bushing 91492

Washer 50mm OD

Position #6

N.B: It is recommended that a licenced workshop or tradesperson carry out the above procedure and that workshop manual and relevant safety procedures are followed in addition to the above.