

Instructions

Body Mount Bushings

N.B: This instruction sheet should be used in conjunction with the workshop manual and proper safety procedures followed.

Application - Suzuki Samurai
- 1986-1995

Any rusted nuts or bolts will require lubricant prior to disassemble.

(Refer current catalogue for complete listing)

Important - note items below that need to be removed/unbolted prior to lifting body.

Contents - Bushing 91601 x6
- Bushing 91602 x6
- Bushing 91603 x2
- Bushing 91604 x2
- Bushing 91605 x2
- Bushing 91606 x2
- Bushing 91607 x2
- Bushing 91608 x8
- Bolt M10x1.25x40 x4
- Nyloc nut M10 x6
- Washer 50x13x3 6
- Washer 28x11x2.5 x4
- Washer 19x11x3 spring x6
- Steel tube 16x12x40 x6

Remove and replace mounts from one side of vehicle at a time.

- Position #1 is near Headlights - start by removing the front Grille to access the bolt just in front of head light.

- You will have to un-bolt brake line from inner guard (passenger side).

- Check Heater hoses during the lift - check they are not stressed. Loosen hose clamps if required.

- Loosen fuel filler hose clamp also before lifting.

- As you're lifting, keep an eye on the rear bumper - you may have to loosen also - so to not catch on the chassis/frame.

Important - only lift body high enough to remove and install bushings,

- Loosen and remove all mounts from LH side first - then loosen only mounts from RH side.

- Proceed to lift body - use a jack and timber. The timber will prevent any damage to the floor. Alternatively, use a 2-post Hoist.

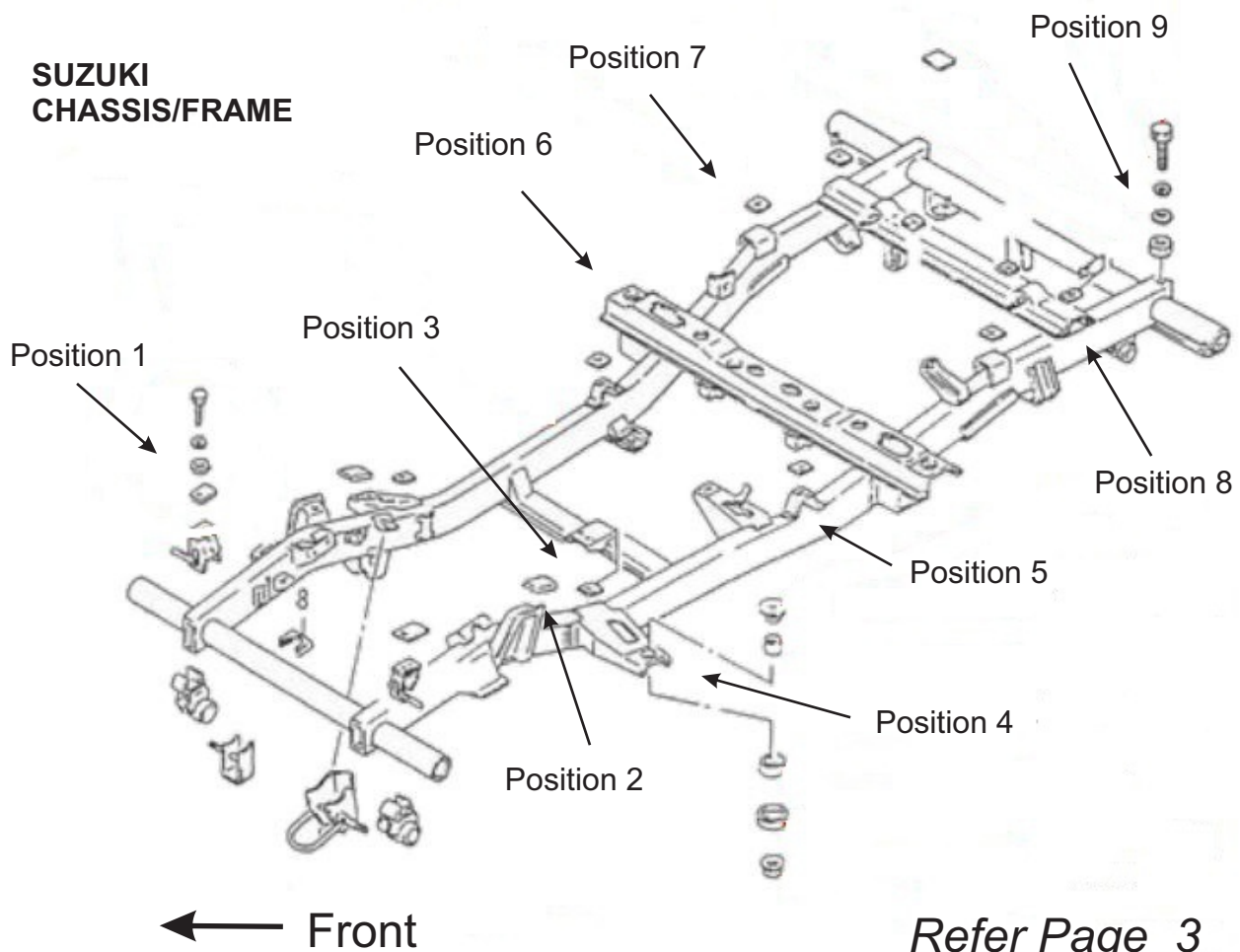
Refer Page 2 and 3 for Install

N.B: It is recommended that a licenced workshop or tradesperson carry out the above procedure and that workshop manual and relevant safety procedures are followed in addition to the above.

Instructions

Body Mount Bushings

- Once all old rubber mounts are removed, clean chassis surface of any rust / dirt / oil.
- For easiest install, use a silicon or Sikaflex glue, to glue lower bushings to chassis/frame. Positions to be glued are #2 #3 #5 #7 and #8.
- Note new bolts are supplied for positions #1 and #9
- Once all mounts have been replaced, road test vehicle.
- Re-check all nuts and bolts after 200kms.

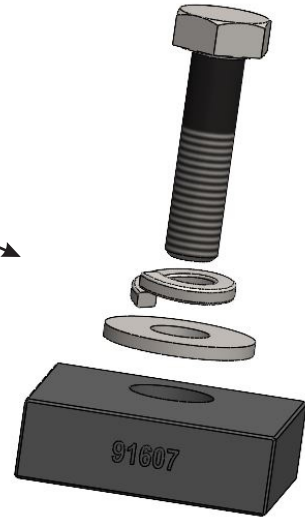


N.B: It is recommended that a licenced workshop or tradesperson carry out the above procedure and that workshop manual and relevant safety procedures are followed in addition to the above.

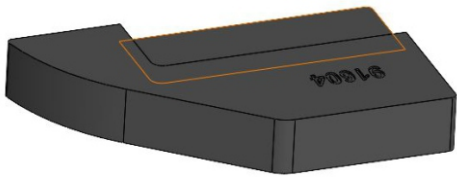
Instructions

Body Mount Bushings

Position #1 - 91607
Use supplied bolts /
spring washer and flat washer.



Position #2 - 91604
Glue under-side to chassis



Position #3 - 91603
Glue under-side to chassis



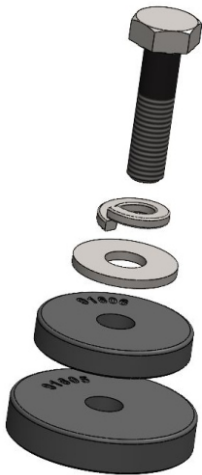
Position #5 #7 #8 - 91608
Glue under-side to chassis



Position #4 #6 - 91601 & 91602
Use supplied Nyloc nut



Position #9 - 91605 & 91606
Use supplied bolts / spring washer
and flat washer.



N.B: It is recommended that a licenced workshop or tradesperson carry out the above procedure and that workshop manual and relevant safety procedures are followed in addition to the above.