

# Instructions

## Body Mount Bushings

**N.B:** This instruction sheet should be used in conjunction with the workshop manual and proper safety procedures followed.

*Page 1 of 2*

Note: Any rusted nuts or bolts will require lubricant prior to disassemble.

When removing each mount, be sure to note each location on vehicle. Also, any existing shims will need to be re-used in their respective point

**Application** - Chev Suburban  
- C and K series 2/4WD

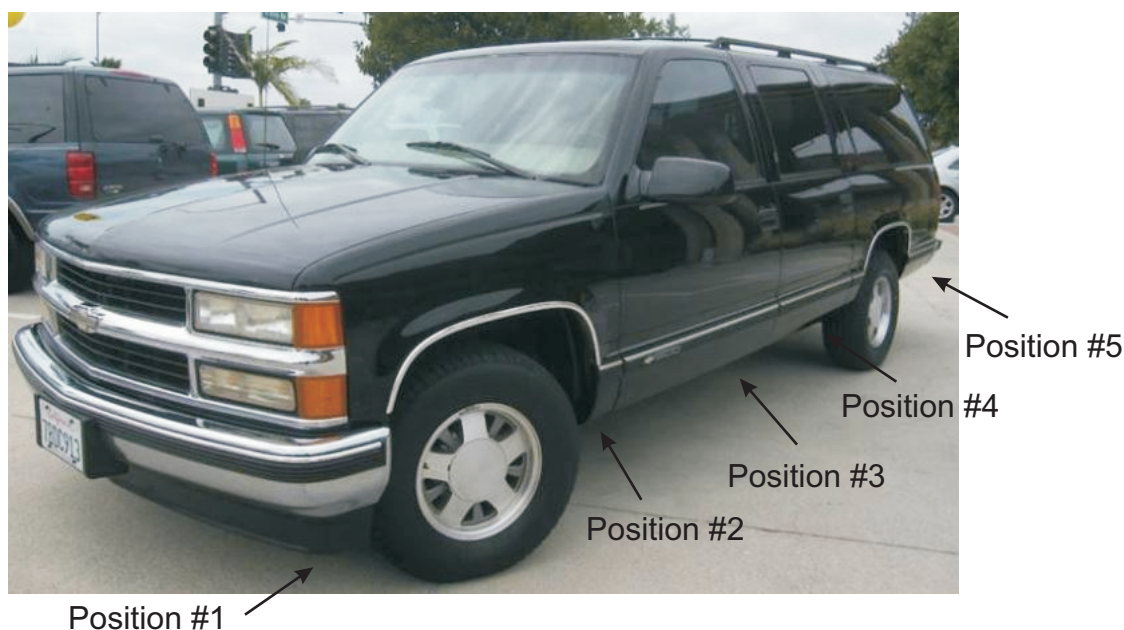
*(Refer current catalogue for complete listing)*

**Contents** - Bushing 90303 x10  
- Bushing 90304 x12  
- Bushing 90312 x2

- Loosen all bolts on both sides of vehicle initially.

**Be careful of fan shroud and other components while lifting.  
A hydraulic jack and timber may be used to lift the body.**

- Proceed by replacing mounts from 1 side of vehicle at a time.  
Note - new bolts are supplied.
- Replace 1 mount at a time, but do not tighten new bolts yet - note diagram on page 2 for bushing position.
- Once all mounts are replaced, confirm body is straight/aligned - tighten all nuts to Manufacturers specifications.
- It is recommended all hardware is re-checked after 500kms travelled.



**N.B:** It is recommended that a licenced workshop or tradesperson carry out the above procedure and that workshop manual and relevant safety procedures are followed in addition to the above.

# Instructions

## Body Mount Bushings

N.B: This instruction sheet should be used in conjunction with the workshop manual and proper safety procedures followed.

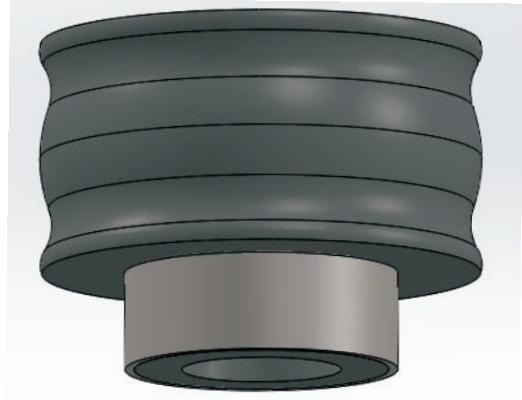
*Continued - Page 2 of 2*

### Position #1

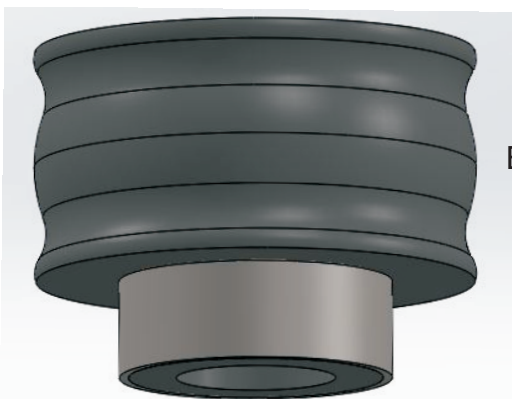
Re-use original washers and inner steel tubes

Remove turn signal lense - for access to mount bolt.

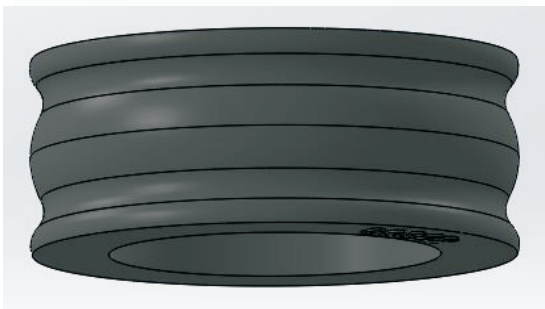
Bushing 90304



Bushing 90312



Bushing 90304



Bushing 90303

### Position #2/3/4/5/6

Re-use original washers and inner steel tubes