

Instructions Engine Mounts

N.B: This instruction sheet should be used in conjunction with the workshop manual and proper safety procedures followed.

Application: Suits vehicle with LS1 engine

Contents: 2x Engine mount inserts
8x 3/8 bolts
8x 3/8 nyloc nuts
8x Flat washers

1. Raise vehicle evenly and safely support.

Note - Proper workshop equipment is required to support engine during mount replacement.

2. Both mounts can be removed at once when engine is properly supported.

3. The rubber material will need to be removed from the steel outer half-shells. This is achieved by first drilling out the 5x OE rivots with a 3/8 or 10mm drill bit.

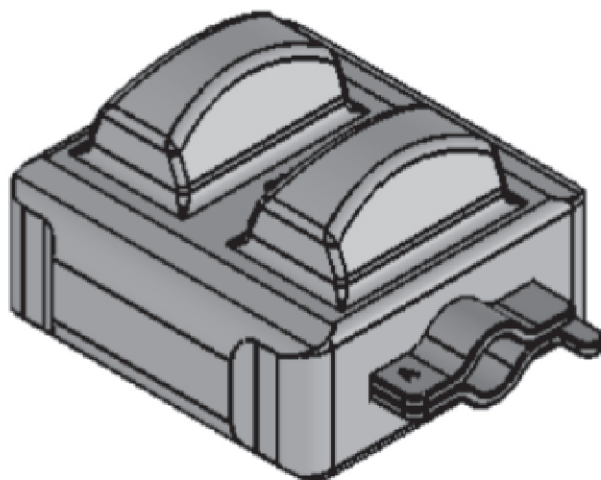
Next - heat will be required to delaminate the rubber from the half-shells. No need for extreme heat - use enough heat to break the bond.

4. Clean the steel shells of excess rubber/dirt.

5. Position new mount inserts inside shells - use new supplied hardware to bolt to vehicle.

6. Re-check bolts after initial 100kms travelled.

Place supplied inserts
inside OE steel shells



N.B: It is recommended that a licenced workshop or tradesperson carry out the above procedure and that workshop manual and relevant safety procedures are followed in addition to the above.