

# Instructions

## Leading Arm/Radius Arm Bushings

**N.B:** This instruction sheet should be used in conjunction with the workshop manual and proper safety procedures followed.

Page 1 of 2

**Application** - Ford - Bronco  
- F100/150/250/350

*Always refer complete catalogue listing*

**IMPORTANT** - original steel cupped washers and central plastic cup may require replacing at time of install.

**Contents** - Bushing 90249 x 2  
- Bushing 90250 x 2  
- Bushing 91490 x 2

### Vehicle Application

F100 F150 1980/92	F150 1993-96
F250 F350 80-92 2WD	F250 F350 1993-98 2WD
BRONCO 1980-1/92 4WD	BRONCO 2/1992 -96
FRONT BUSHING - 90249	FRONT BUSHING - 91490
REAR BUSHING - 90250	REAR BUSHING - 90250

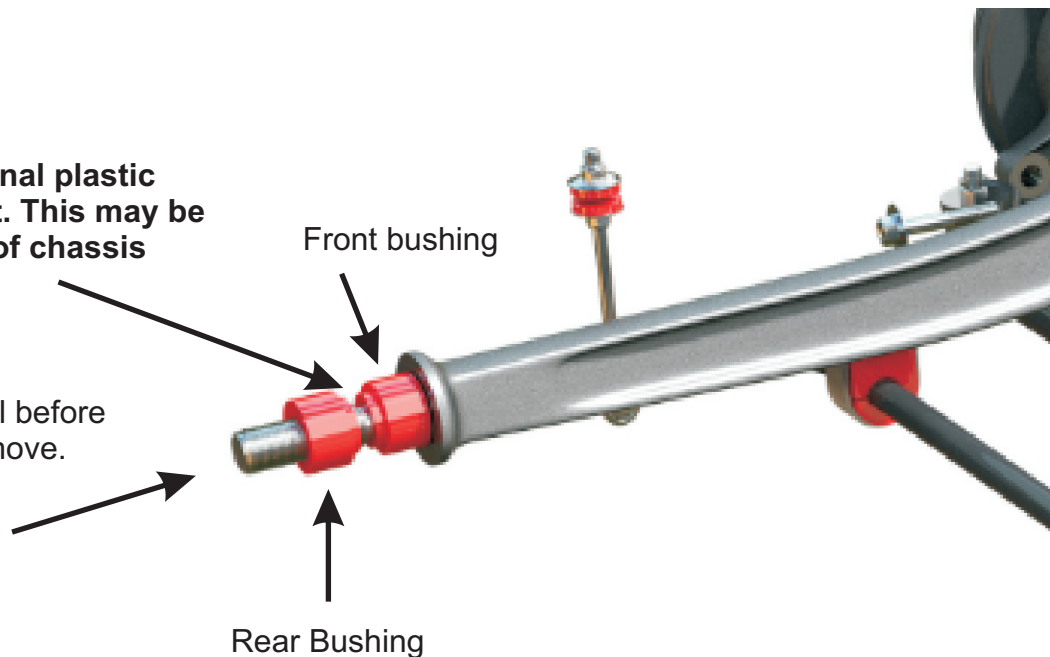
- Replace one side at a time.
- Jack one side and support with a stand - remove wheel.
- Place Jack under Axle and proceed to un-bolt top shock nut.

**NOTE** - the radius rod nut will be very tight. Suggest lubricate well and let sit for some time.

- Un-bolt Radius rod nut. Also remove lower Axle pivot bushing.
- Now push axle forward to access front bushing.

**Check for original plastic cup - if present. This may be on either side of chassis**

Lubricate nut well before attempting to remove.



**N.B:** It is recommended that a licenced workshop or tradesperson carry out the above procedure and that workshop manual and relevant safety procedures are followed in addition to the above.

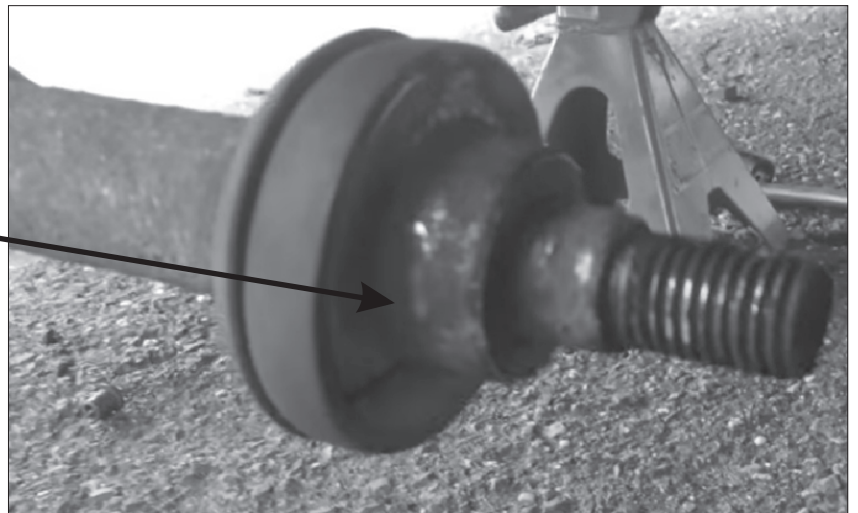
# Instructions Leading Arm/Radius Arm Bushings

**N.B:** This instruction sheet should be used in conjunction with the workshop manual and proper safety procedures followed.

*Page 2 of 2*

Continued:

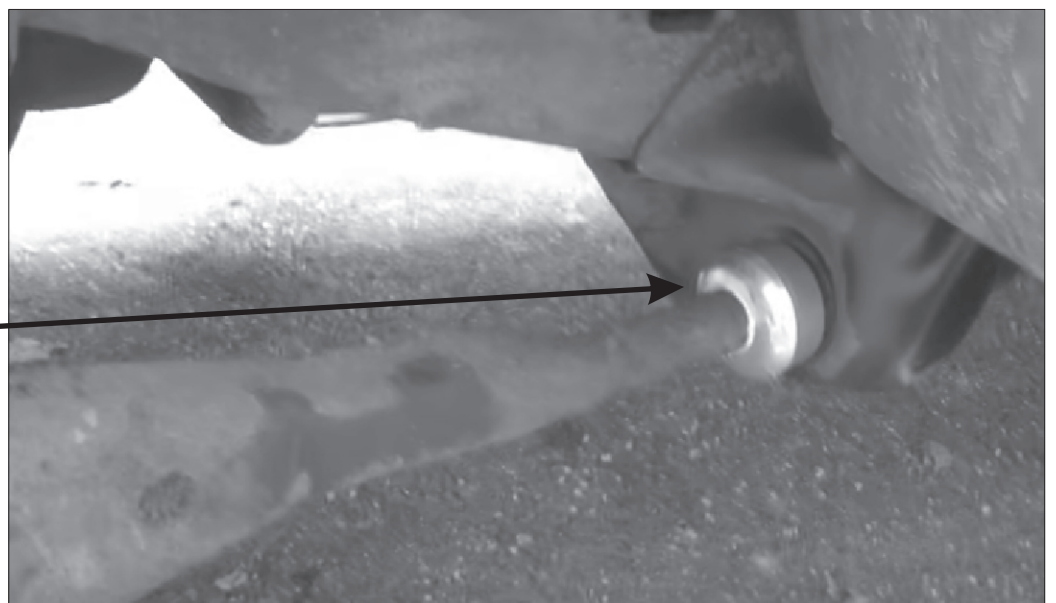
- Remove pressed OE fit steel collar - you may have to destroy.
- Clean up all parts well from any rust or oil.



- Install new supplied bushings - refer vehicle reference table on page 1.

Note - you may require new cupped washers - refer image.

- Tighten all bolts and road test.
- Re-check all bolts after 100kms travelled.



**N.B:** It is recommended that a licenced workshop or tradesperson carry out the above procedure and that workshop manual and relevant safety procedures are followed in addition to the above.