

Instructions

Body Mount Bushings

N.B: This instruction sheet should be used in conjunction with the workshop manual and proper safety procedures followed.

Page 1 of 2

Note: Any rusted nuts or bolts will require lubricant prior to disassemble.

When removing each mount, be sure to note each location on vehicle. Also, any existing shims will need to be re-used in their respective point

- Loosen all bolts on both sides of vehicle initially.

Be careful of fan shroud and other components while lifting. A hydraulic jack and timber may be used to lift the body.

- Proceed by replacing mounts from 1 side of vehicle at a time.
Note - new bolts are supplied.

- Replace 1 mount at a time, but do not tighten new bolts yet - note image below and diagram on page 2 for bushing position.

- Once all mounts are replaced, confirm body is straight/aligned - tighten all nuts to Manufacturers specifications.

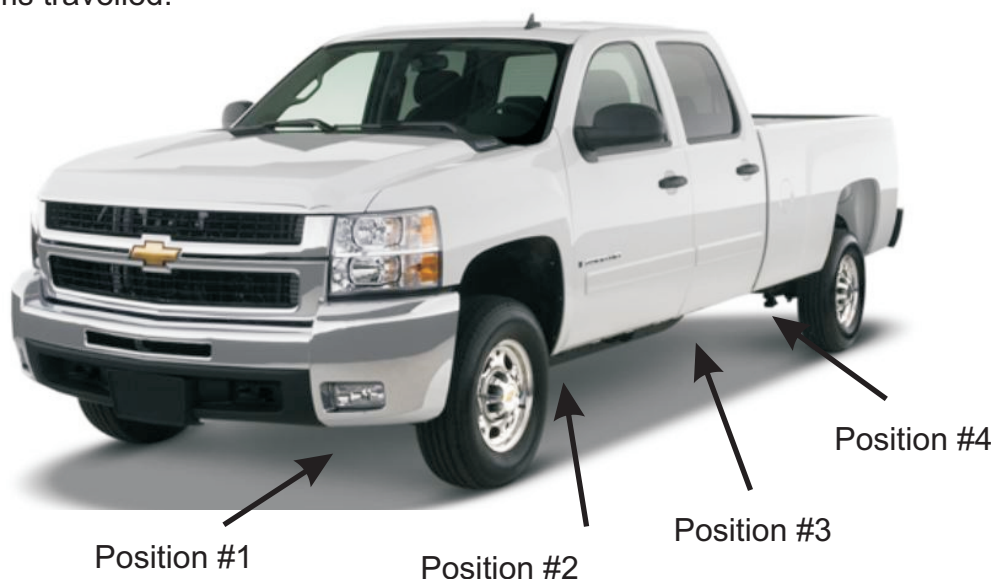
- It is recommended all hardware is re-checked after 500kms travelled.

Application - Chev Silverado 2500/3500
- 4WD 2007-10

(Refer current catalogue for complete listing)

Contents - Bushing 90423 x8
- Bushing 91651 x4
- Bushing 91660 x4
- Flat washer x8

Note - remove and discard OE plastic cap that sits over body mount.



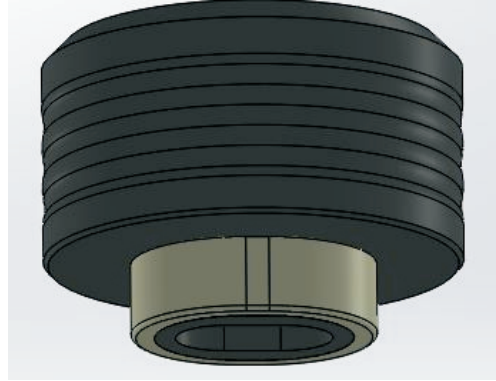
N.B: It is recommended that a licenced workshop or tradesperson carry out the above procedure and that workshop manual and relevant safety procedures are followed in addition to the above.

Instructions Body Mount Bushings

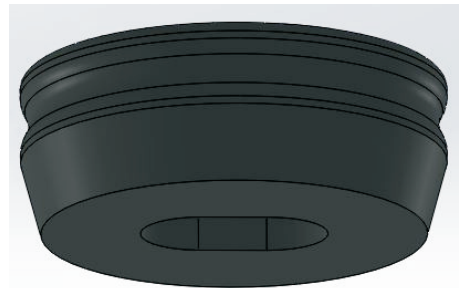
Continued - page 2

**Position #1 and #3
Re-assemble with
OE upper steel
components**

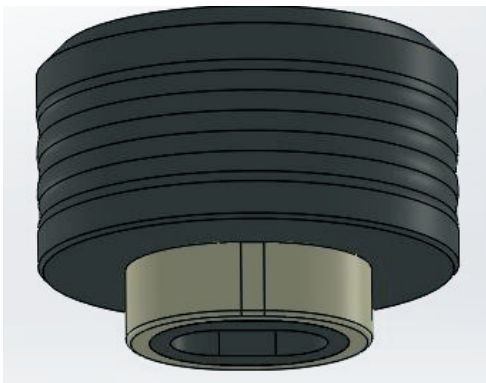
Bushing 91651



Bushing 90423



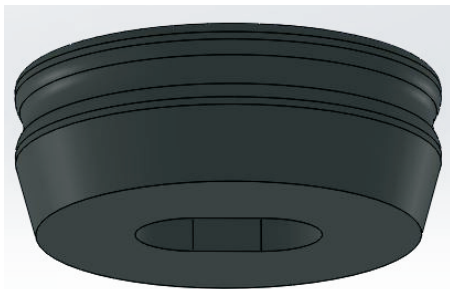
Supplied washer



Bushing 91660



**Position #2 and #4
Re-assemble with
OE upper steel
components**



Bushing 90423



Supplied washer

N.B: It is recommended that a licenced workshop or tradesperson carry out the above procedure and that workshop manual and relevant safety procedures are followed in addition to the above.