

Instructions

Rear Diff - Front Bushing

N.B: This instruction sheet should be used in conjunction with the workshop manual and proper safety procedures followed.

1. Raise vehicle evenly and safely support.

2. Remove the original bushing - you may have to lower or remove Diff to gain access. The original bushing can be cut out with a Air-hacksaw and/or drill. Push Air-hack saw though rubber and proceed to cut the outer steel shell. Once cut, the bushing can be hit out with a Hammer or mallet.

3. Once removed and Eye-ring clean, push new supplied bushings in place. Push supplied bushing in place with stepped recess facing towards front of vehicle Grease bushing ID and face with supplied grease only.

4. Push supplied tube in place. The offset hole is best positioned horizontally - to assist install and starting bolts.

During install of Diff, place supplied washers either side of bushing

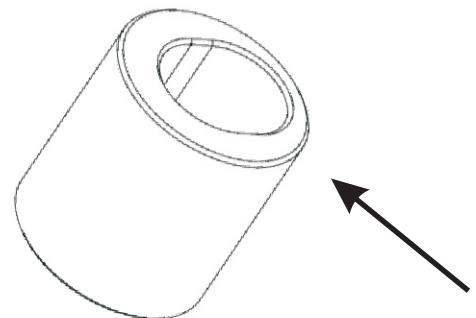
(place slotted washer under bolt head)

5. Place spring washer under bolt head, followed by slotted washer - tighten to OE spec.

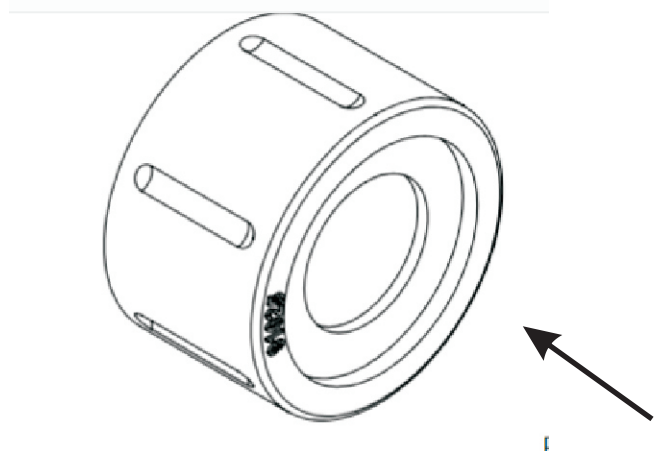
6 Road-test - re check bolt after 100kms travelled.

Application - BMW E46 M3
- BMW Z4M
(Refer current catalogue listing)

Contents - 1x bushing 91025
1x steel tube - slotted hole
1x steel washer 38mm OD
1x washer 38mm OD slotted hole
1x spring washer
Grease



Place off-set tube horizontally



Place stepped face towards front of vehicle

N.B: It is recommended that a licenced workshop or tradesperson carry out the above procedure and that workshop manual and relevant safety procedures are followed in addition to the above.