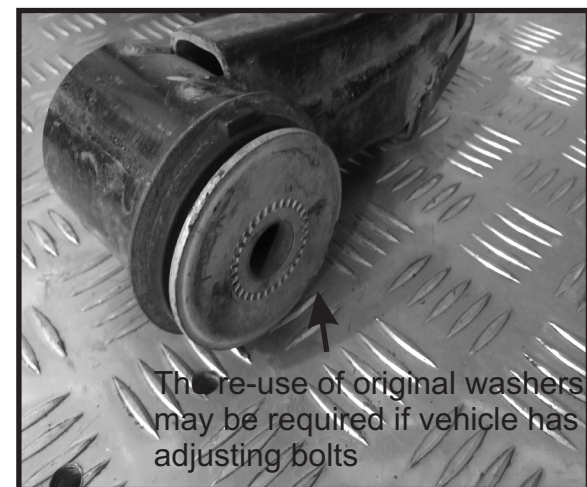
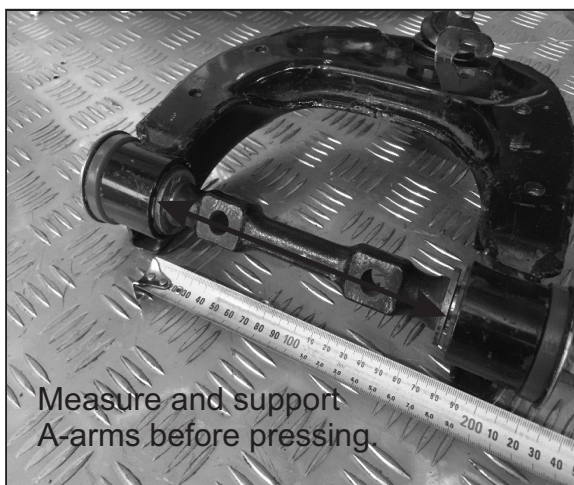
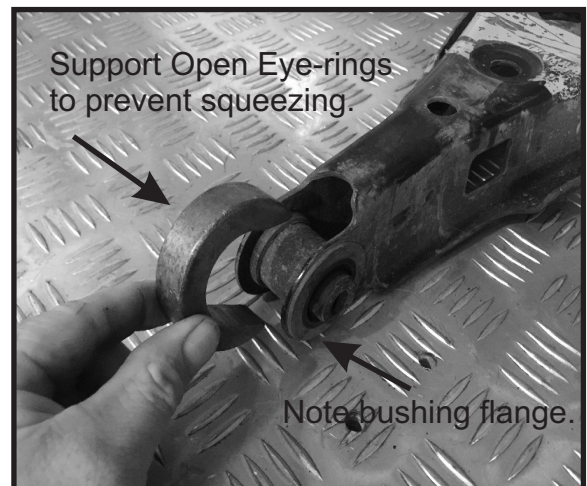
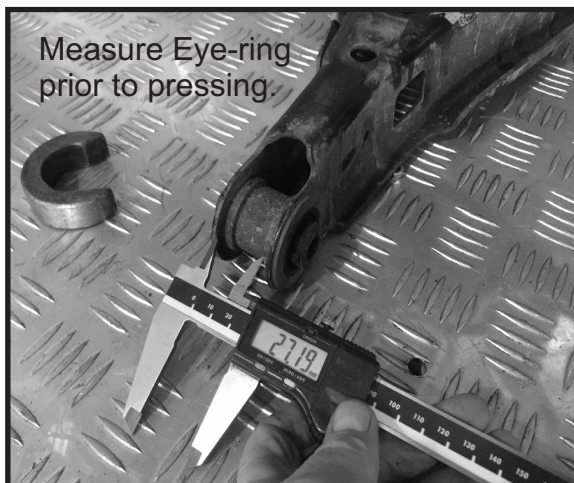


# Instructions

## General Control Arm Shell Bushing Removal

**N.B:** This instruction sheet should be used in conjunction with the workshop manual and proper safety procedures followed.

1. Confirm your new bushings have an outer steel shell. If no, you may have to leave the original shell in the control arm.
2. In order to remove the rubber only, you may apply heat to the bonded area of the bushing. Careful to not over heat - there should be no flames present.
3. If pressing bushings out of A-arms or open eye-rings, be sure to measure the control arm and support the arm prior to pressing - please see images 1,2 and 3.
4. Check the bushing OD - if the bushing is stepped, note the 2 different OD's and pressing direction.
5. If the vehicle has factory adjustment bolts, there may be a washer as part of the original bushing. This may need to be removed and re-used with new supplied bushing. Please see image 4. This is due to the slot in the chassis.
6. When installing new bushings, grease ID and face of bushings with the supplied grease only.
7. All bolts should be re-torqued to manufacturers specifications - this is best done at ride height.



**N.B:** It is recommended that a licenced workshop or tradesperson carry out the above procedure and that workshop manual and relevant safety procedures are followed in addition to the above.

# Instructions

## Front Control Arm Bushings

**N.B:** This instruction sheet should be used in conjunction with the workshop manual and proper safety procedures followed.

Page 1 of 2

- Raise vehicle evenly and safely support.

*Never rely on a Jack only*

**Important - do not perform this job if you are not familiar with this type of work**

**Refer universal guide Z5630 for shell bushing removal.**

**Remove and service only one arm at a time.**

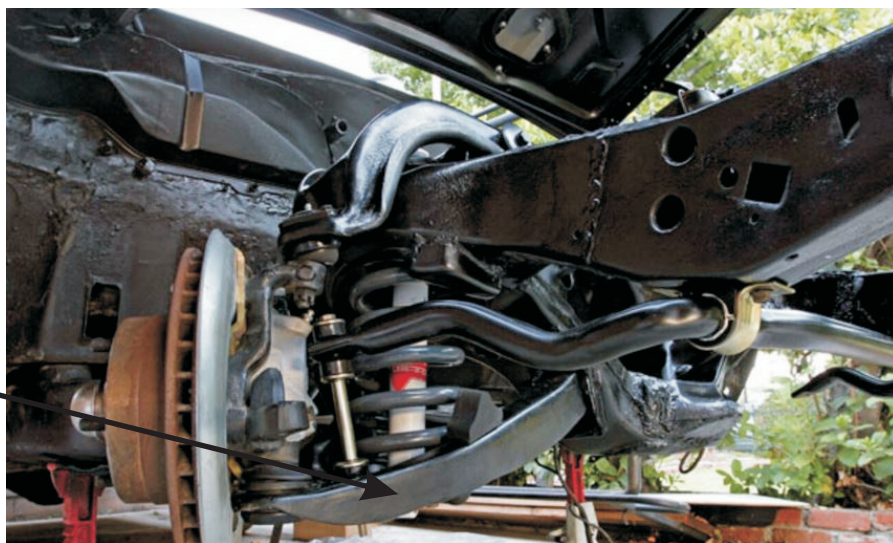
- Proceed to remove front wheels.
- Spray all nuts and bolts with lubricant.
- Press or cut out old bushings - including the steel outer shell.
- Once bushings are removed, clean Eyes of any grease and oil.

**Refer page 2 for bushing install guide.**

- Re-fit arms with original bolts. A wheel alignment will be required immediately after install.
- Re-check all bolts after 100 kms travelled

**IMPORTANT** - a Jack is required to be placed under lower arm **BEFORE** the shock is removed.

Then proceed to lower control arm slowly.



**Application** - Chev Chevelle  
- Chev El Camino  
- 1964-66

*(Refer current catalogue for complete listing)*

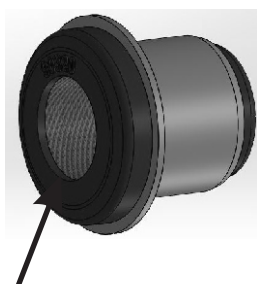
**Contents** - Bushing 90320 x4  
- Bushing 90322 x2  
- Bushing 90641 x2  
- Steel tube 19x13.2x61 x4  
- Steel tube 22.2x17x40 x4  
- Grease

**N.B:** It is recommended that a licenced workshop or tradesperson carry out the above procedure and that workshop manual and relevant safety procedures are followed in addition to the above.

# Instructions

## Front Control Arm Bushings

Page 2 of 2



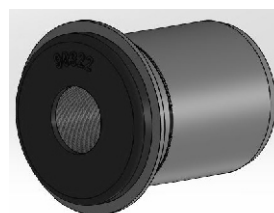
Push bushing **90320** into upper arm (don't push in all the way) - grease bushing ID and face with supplied grease only

Press new bushings in evenly until they sit up against steel spindle. Do not push bushings in completely.

Note gap



Press lower Arm bushings all the way until flange meets arm



Push bushing **90322** into rear eye  
Push bushing **90641** into front eye.

N.B: It is recommended that a licenced workshop or tradesperson carry out the above procedure and that workshop manual and relevant safety procedures are followed in addition to the above.