

Instructions

HONDA REAR TRAILING ARM BUSHING

N.B: This instruction sheet should be used in conjunction with the workshop manual and proper safety procedures followed.

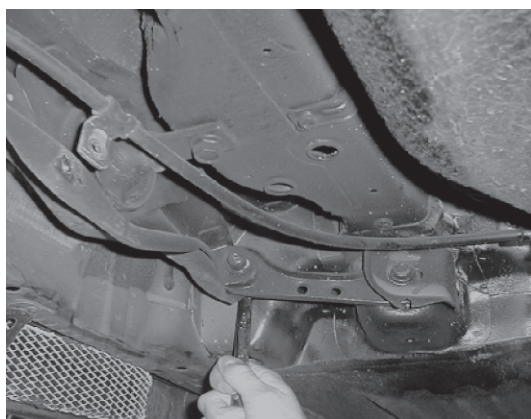


Image 1

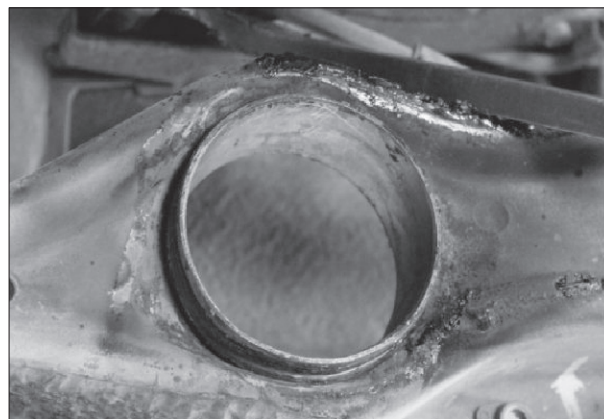


Image 2



1. Raise vehicle evenly and safely support.

2. Unbolt the small front control arm and handbrake cable bracket - refer image 1.
Note: for the RHS you may wish to remove the exhaust.

3. "Cut" the rubber bushing out from the OE outer steel shell - DO NOT remove the OE outer shell - refer image 2. Be sure shell is clean from any rubber.
Note: the OE steel "Pin" is to be re-used and will need to be removed the worn OE bushing. Refer image 3. Remove all rubber from OE Pin by use of a knife, wire saw or heat. The steel Pin is 'offset' - please note for re-install.

4. Pressing in of supplied bushing - there are 2 ways;

1. Using a threaded Tool to 'pull' bushing in - refer image 4
2. Remove arm from vehicle and use a Press - Soapy water will aid install.

5. Grease bushing ID and re-fit OE Pin.

Re-fit trailing arm to vehicle and carry out Wheel Alignment.

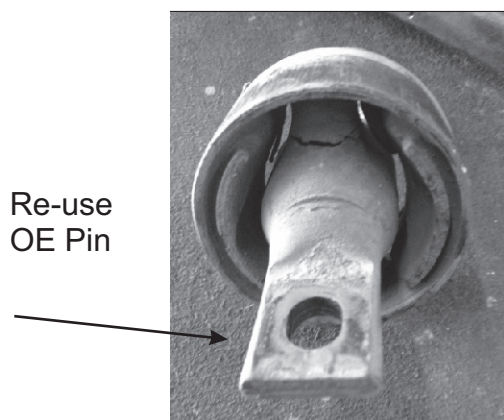


Image 3

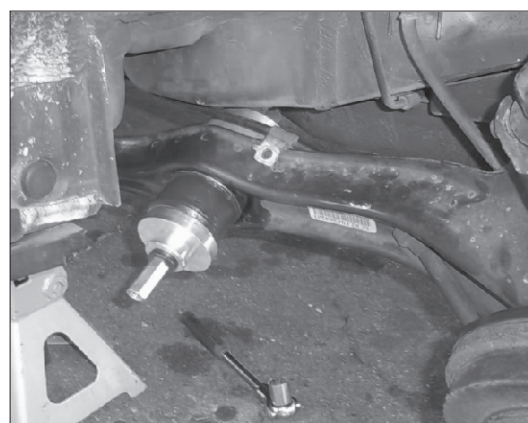


Image 4



N.B: It is recommended that a licenced workshop or Trades-person carry out the above procedure and that workshop manual and relevant safety procedures are followed in addition to the above.