

Instructions

Front Control Arm Bushings

N.B: This instruction sheet should be used in conjunction with the workshop manual and proper safety procedures followed.

Install Guide

- Raise vehicle evenly and safely support.

Never rely on a Jack only

- Proceed to remove front wheels and un-bolt front control arms.

Note - a Press will be required to remove and replace bushings

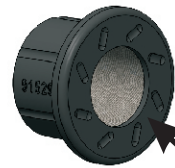
**The Control Arm is aluminium - be careful to not damage.
Do not use flame to heat arm up.**

- The small front bushing can be removed with a drill - note image below. Careful to not damage aluminium arm.
- Press large bushing 91528 in with soapy water and flat surfaces.
- Grease bushing internal diameter and face with supplied grease only.
- A wheel alignment is recommended after install to correct Toe.

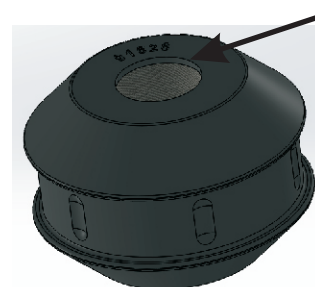
Application - Mitsubishi Lancer
- EVO 8 2003-05

Always refer complete catalogue listing

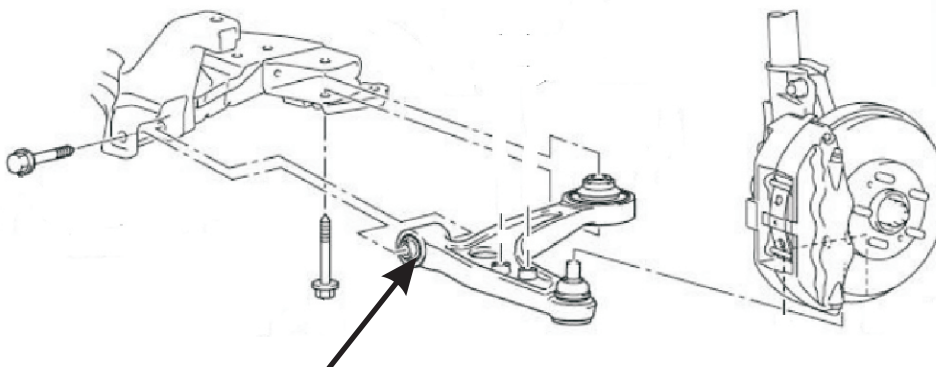
Contents - Bushing 91528 x2
- Bushing 91529 x4
- Steel tube 22x14x60mm x2
- Steel tube 25x17x60mm x2
- Grease



Grease face and ID
with supplied grease only.



Press new bushing in
with soapy water



Drill small hole here - to cut steel outer shell
This will cause bushing to shrink. Careful to not damage aluminium arm.

N.B: It is recommended that a licenced workshop or tradesperson carry out the above procedure and that workshop manual and relevant safety procedures are followed in addition to the above.