

Instructions

Body Mount Bushings

N.B: This instruction sheet should be used in conjunction with the workshop manual and proper safety procedures followed.

Page 1 of 2

Application - FJ40 Landcruiser
- 1979-83

(Refer current catalogue for complete listing)

Note: Any rusted nuts or bolts will require lubricant prior to disassemble.

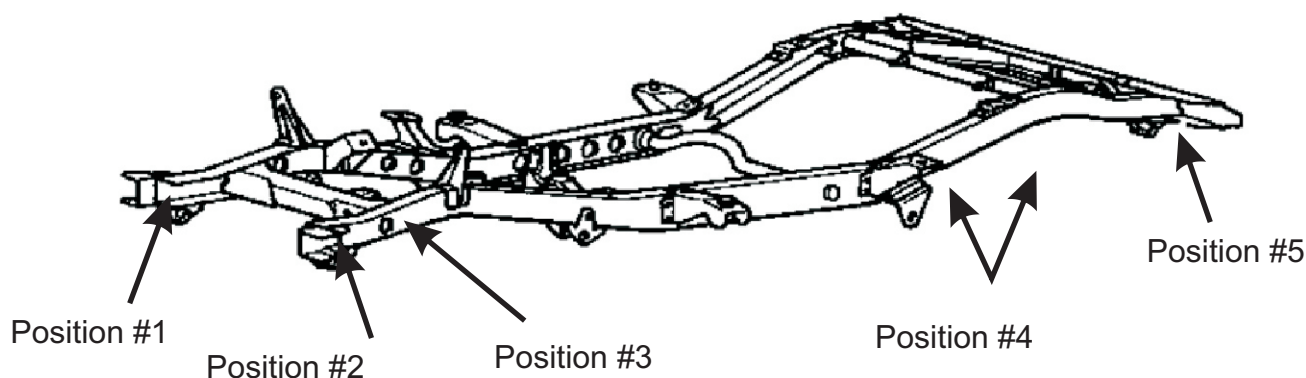
When removing each mount, be sure to note each location on vehicle. Also, any existing shims will need to be re-used in their respective point

Contents - Bushing 90691 x4
- Bushing 90694 x4
- Bushing 91456 x2
- Bushing 91466 x4
- Bushing 91467 x2
- Steel tubes x6
- Flat washer 38mm OD x2
- Flat washer 50mm OD x4
- Flat washer 63mm OD x6

- Loosen all bolts on both sides of vehicle initially.

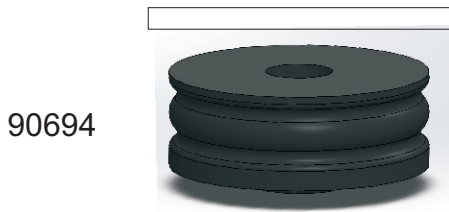
Be careful of fan shroud and other components while lifting. A hydraulic jack and timber may be used to lift the body.

- Proceed by replacing mounts from 1 side of vehicle at a time.
- Replace 1 mount at a time, but do not tighten bolts yet - note diagram on page 2 for bushing position.
- Once all mounts are replaced, confirm body is straight/aligned - tighten all nuts to Manufacturers specifications.
- It is recommended all hardware is re-checked after 500kms travelled.



N.B: It is recommended that a licenced workshop or tradesperson carry out the above procedure and that workshop manual and relevant safety procedures are followed in addition to the above.

Instructions Body Mount Bushings



Supplied washer

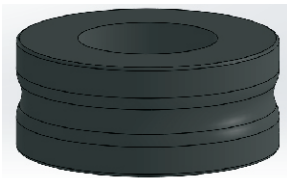
90694

Position #2



Position #1

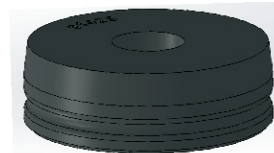
91456



Supplied washer

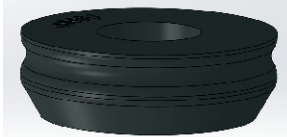
Supplied washer

Supplied washer



91423

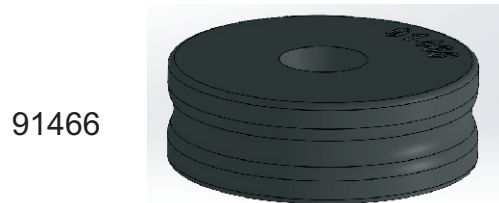
Position #3



90691

Supplied washer

Supplied washer

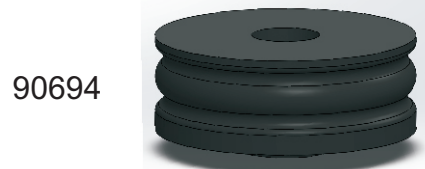


91466

Position #4

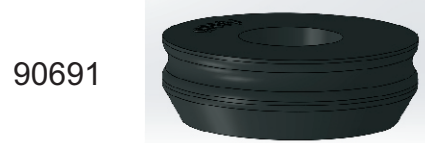
Supplied washer

Supplied washer



90694

Position #5



90691

Supplied washer

Supplied washer

N.B: It is recommended that a licenced workshop or tradesperson carry out the above procedure and that workshop manual and relevant safety procedures are followed in addition to the above.