

Instructions

Front Control Arm Bushings

N.B: This instruction sheet should be used in conjunction with the workshop manual and proper safety procedures followed.

Page 1 of 2

- Raise vehicle evenly and safely support.

Never rely on a Jack only

Important - do not perform this job if you are not familiar with this type of work

Refer universal guide Z5630 for shell bushing removal.

Remove and service only one arm at a time.

- Proceed to remove front wheels.
- Spray all nuts and bolts with lubricant.
- Press or cut out old bushings - including the steel outer shell.
- Once bushings are removed, clean Eyes of any grease and oil.

Refer page 2 for bushing install guide.

- Re-fit arms with original bolts. A wheel alignment will be required immediately after install.
- Re-check all bolts after 100 kms travelled

IMPORTANT - a Jack is required to be placed under lower arm. **BEFORE** the shock is removed.

Then proceed to lower control arm slowly.

Application - Cadillac Brougham/Deville
- Buick Electra/Lesabre

(Refer current catalogue for complete listing)

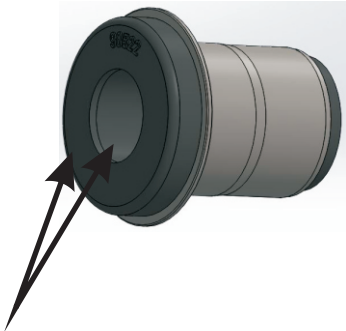
Contents - Bushing 90494 x2
- Bushing 90495 x2
- Bushing 90522 x4
- Steel tube 19x14.3x61.5 x4
- Steel tube 22.2x18.2x53.5 x4
- Grease

N.B: It is recommended that a licenced workshop or tradesperson carry out the above procedure and that workshop manual and relevant safety procedures are followed in addition to the above.

Instructions

Front Control Arm Bushings

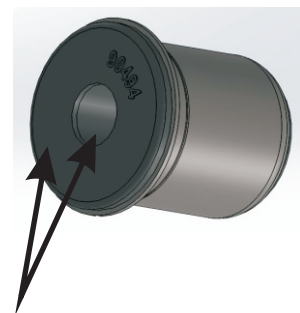
Page 2 of 2



Press bushing 90522 into upper arm. Grease bushing ID and face with supplied grease only.



Press bushings in until they touch the spindle - do not push bushings in all the way.



Press bushing 90494 and 90495 into lower arm - Press bushings in all the way home. Grease bushing ID and face with supplied grease only.

N.B: It is recommended that a licenced workshop or tradesperson carry out the above procedure and that workshop manual and relevant safety procedures are followed in addition to the above.