

Instructions

Body Mount Bushings

N.B: This instruction sheet should be used in conjunction with the workshop manual and proper safety procedures followed.

Page 1 of 2

Application - Chev Tahoe
- GMC Yukon

(Refer current catalogue for complete listing)

Note: Any rusted nuts or bolts will require lubricant prior to disassemble.

Contents - 8x bushing 90303
- 10x bushing 90304
- 2x bushing 90312

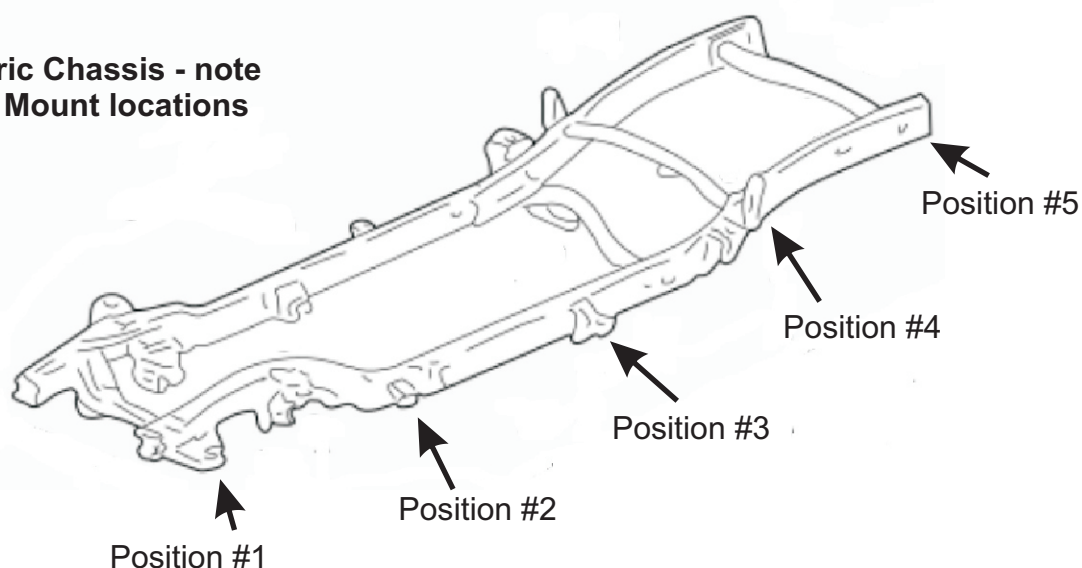
When removing each mount, be sure to note each location on vehicle. Also, any existing shims will need to be re-used in their respective point

- Loosen all bolts on both sides of vehicle initially.

**Be careful of fan shroud and other components while lifting.
A hydraulic jack and timber may be used to lift the body.**

- Proceed by replacing mounts from 1 side of vehicle at a time.
- Replace 1 mount at a time, but do not tighten bolts yet - note diagram on page 2 for bushing position.
- Once all mounts are replaced, confirm body is straight/aligned - tighten all nuts to Manufacturers specifications.
- It is recommended all hardware is re-checked after 500kms travelled.

**Generic Chassis - note
Body Mount locations**



N.B: It is recommended that a licenced workshop or tradesperson carry out the above procedure and that workshop manual and relevant safety procedures are followed in addition to the above.

Instructions

Body Mount Bushings

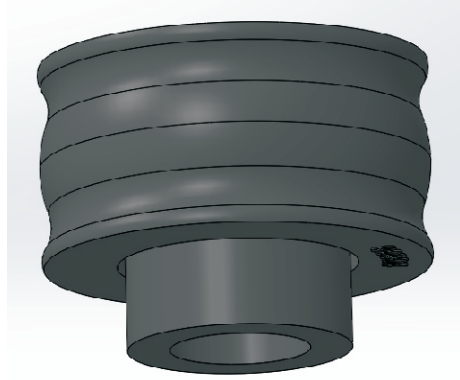
Page 2 of 2

Body -

Factory washer (with tube) 

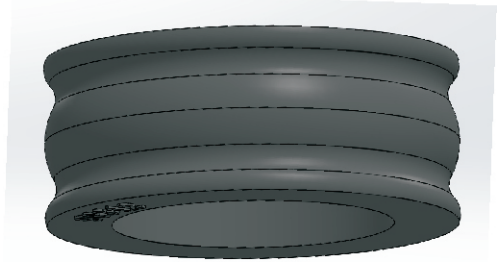
Position #1

Bushing #90304



Chassis -

Bushing #90312



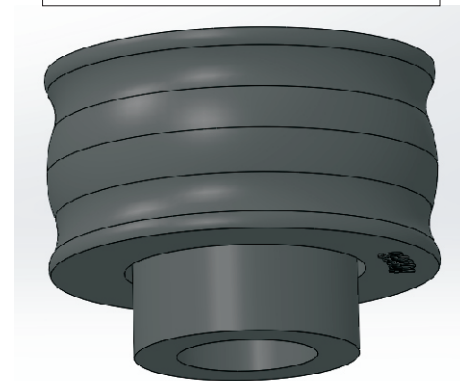
Factory washer 

Body -

Factory washer (with tube) 

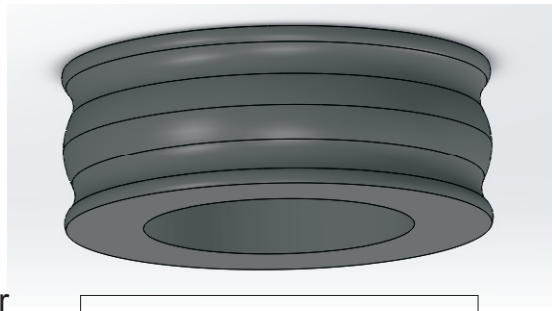
Position #2 to #5

Bushing #90304



Chassis -

Bushing #90303



Factory washer 