

Instructions

Body Mount Bushings

N.B: This instruction sheet should be used in conjunction with the workshop manual and proper safety procedures followed.

Page 1 of 2

Application - Ford F100 F150 F250 F350
- Various models 1980-98

(Refer current catalogue for complete listing)

Note: Any rusted nuts or bolts will require lubricant prior to disassemble.

When removing each mount, note any existing shims will need to be re-used in their respective point

Contents - Bushing 90618 x 2
- Bushing 90619 x 2
- Bushing 90620 x 2
- Bushing 90621 x 2
- Bushing 90622 x 2
- Bushing 90623 x 2
- Washer 50x13x3mm x 2

- Loosen all bolts on both sides of vehicle initially.

Be careful of fan shroud and other components while lifting. A hydraulic jack and timber may be used to lift the body.

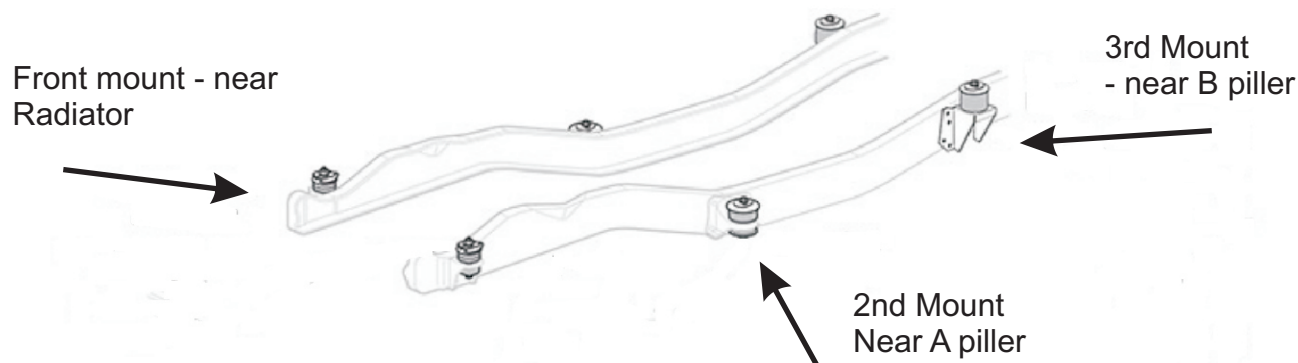
- Proceed by replacing mounts from 1 side of vehicle at a time.

Note - Ford mounts need to be 'hit' apart. Access bolts from inside of vehicle and loosen (but do not remove bolt yet). Now hit bolt downwards with mallet - to loosen lower mount away from frame.

- Replace 1 mount at a time, but do not tighten bolts yet - note diagram on page 2 for bushing position. Re-use steel components in lower mount (use a knife to completely remove rubber surrounding steel washer/nut).

- Once all mounts are replaced, confirm body is straight/aligned - tighten all nuts to Manufacturers specifications.

- It is recommended all hardware is re-checked after 500kms travelled.



N.B: It is recommended that a licenced workshop or tradesperson carry out the above procedure and that workshop manual and relevant safety procedures are followed in addition to the above.

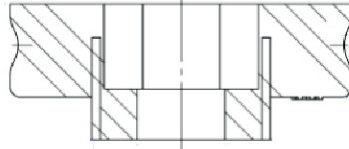
Instructions Body Mount Bushings

Page 2 of 2

Position #1

Upper Bushing
90622

Factory
washer/tube



Frame

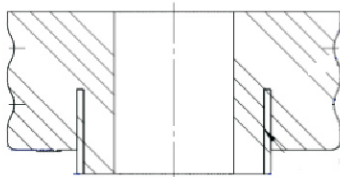
Frame

Lower Bushing
90623



Supplied
50mm washer

Factory
washer/tube



Frame

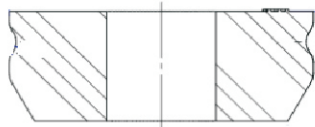
Frame

Upper Bushing
90620

Position #2

Lower Bushing
90621

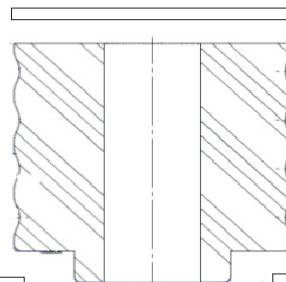
Factory
washer/tube



Position #3

Upper bushing
90618

Factory
washer/tube



Frame

Frame

Lower Bushing
90619



Factory
washer/tube

N.B: It is recommended that a licenced workshop or tradesperson carry out the above procedure and that workshop manual and relevant safety procedures are followed in addition to the above.