

Instructions

Radius Arm Bushings

N.B: This instruction sheet should be used in conjunction with the workshop manual and proper safety procedures followed.

- Raise vehicle evenly and safely support.

Never rely on a Jack only

- Proceed to remove front wheels and un-bolt front Radius arms.

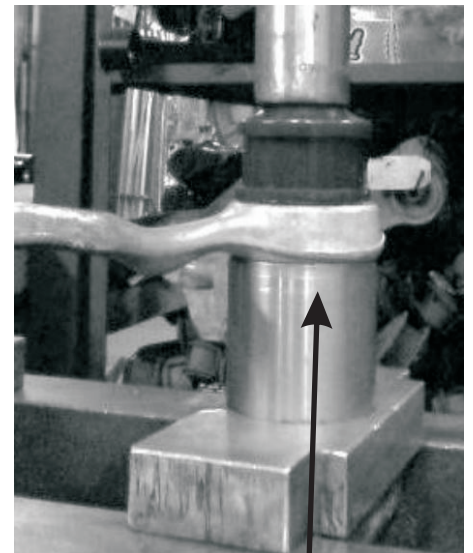
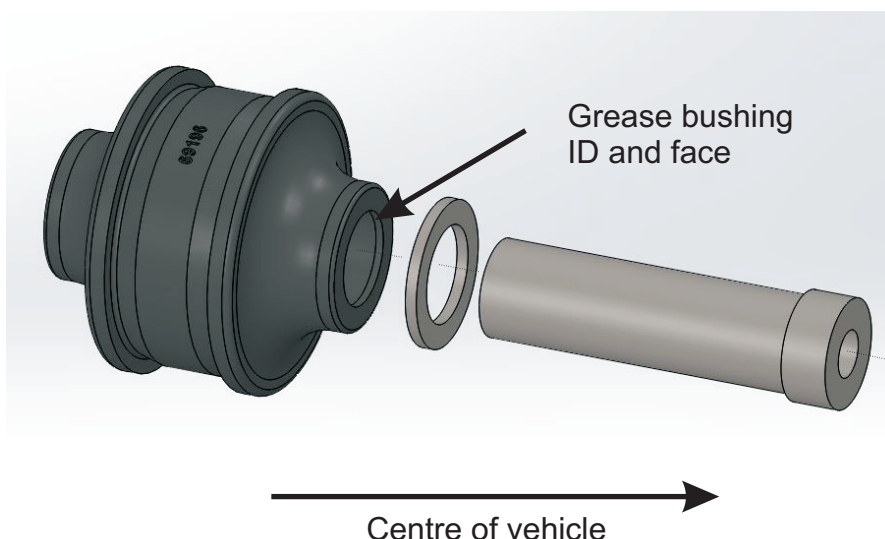
Note - a Press will be required to remove old bushings

- Press out old bushings - careful to not damage aluminium arm.
- Pop in new bushing - use soapy water to aid the install.
- Grease bushing internal diameter and side faces with supplied grease only.
- Push in supplied steel tube with washer - refer image below.
- Re-fit arm to vehicle - re-use OE bolts. Tighten Radius bushing to 70-80nm
- A wheel alignment is recommended after install.

Application - BMW 3 Series
- F20 F30 Series

Always refer complete catalogue listing

Contents - Bushing 69196 x2
- Steel tube 25.2x12.3x95 x2
- Steel washer 38x25.4x3 x2
- Grease



Press new bushing in with soapy water.

N.B: It is recommended that a licenced workshop or tradesperson carry out the above procedure and that workshop manual and relevant safety procedures are followed in addition to the above.