

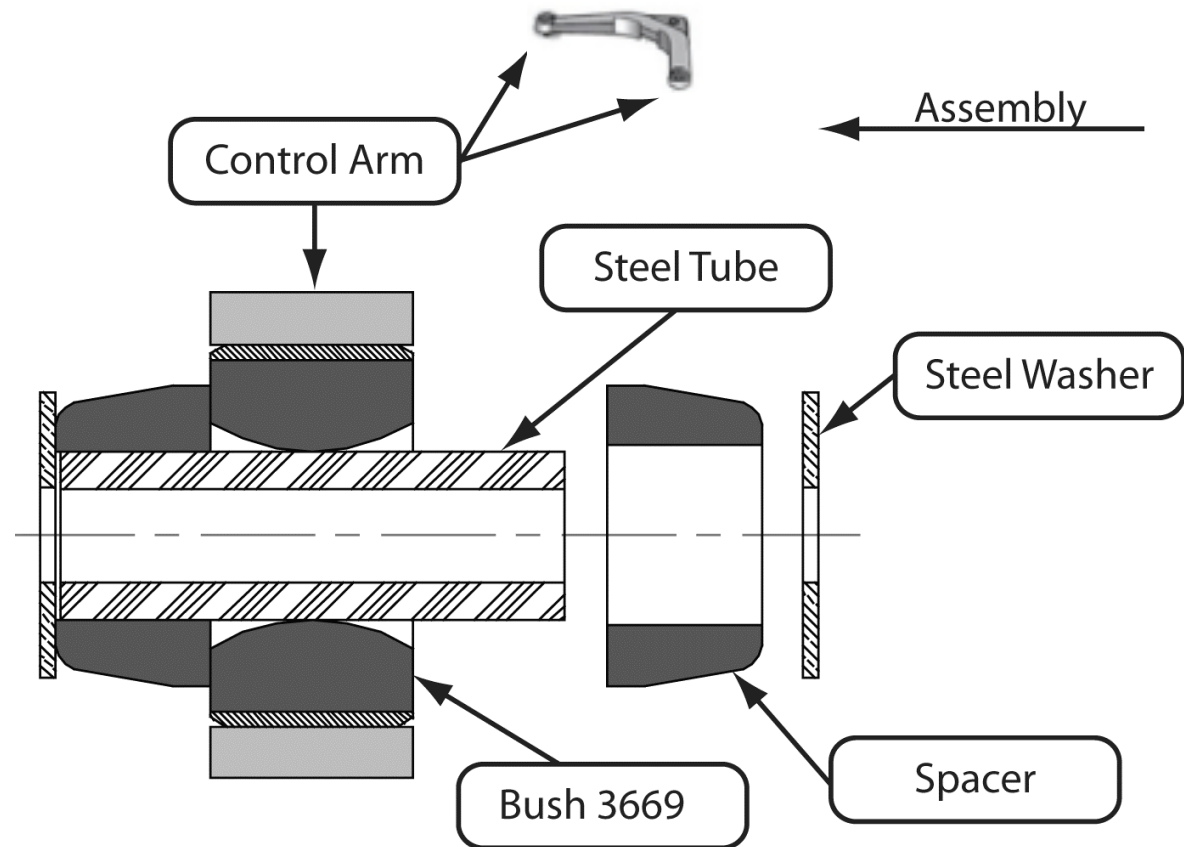
# Fitting Instructions #Z7006

## Jeep Grand Cherokee WJ

### Control Arm Upper Rear Bushing

The information is for reference only.

- With the vehicle on jack stands and the wheels removed, proceed to remove the upper control arms. Refer to your workshop manual for detailed instructions of how to remove them from the vehicle;
- Remove the original bushes by using a hydraulic press or other suitable tool to push them out;
- Ensure that the grease supplied is used on all mating surfaces during assembly and install the bushes, as it is shown in the picture above;
- Apply the grease supplied to the bore of the bush and the steel crush tube. Push in the crush tube;
- Refit the control arms to the car;
- Ensure that all bolts are tightened to the manufactures specifications then proceed to have the vehicle wheel-aligned.



**Note:** Polyurethane bushings must be fitted to both sides of the vehicle. This kit should be installed by a Qualified Motor Mechanic.