

# Instructions

## Body Mount Bushings

**N.B:** This instruction sheet should be used in conjunction with the workshop manual and proper safety procedures followed.

Page 1 of 2

**Application** - Chev Pick-up C30/K30  
- GMC Pick-up K1500/2500/3500

(Refer current catalogue for complete listing)

Note: Any rusted nuts or bolts will require lubricant prior to disassemble.

When removing each mount, be sure to note each location on vehicle. Also, any existing shims will need to be re-used in their respective point

**Contents** - Bushing 90288 x2  
- Bushing 90289 x2  
- Bushing 90300 x2  
- Bushing 90301 x2  
- Bushing 90309 x2  
- Bushing 91404 x2

- Loosen all bolts on both sides of vehicle initially.

**Be careful of fan shroud and other components while lifting. A hydraulic jack and timber may be used to lift the body.**

- Proceed by replacing mounts from 1 side of vehicle at a time.

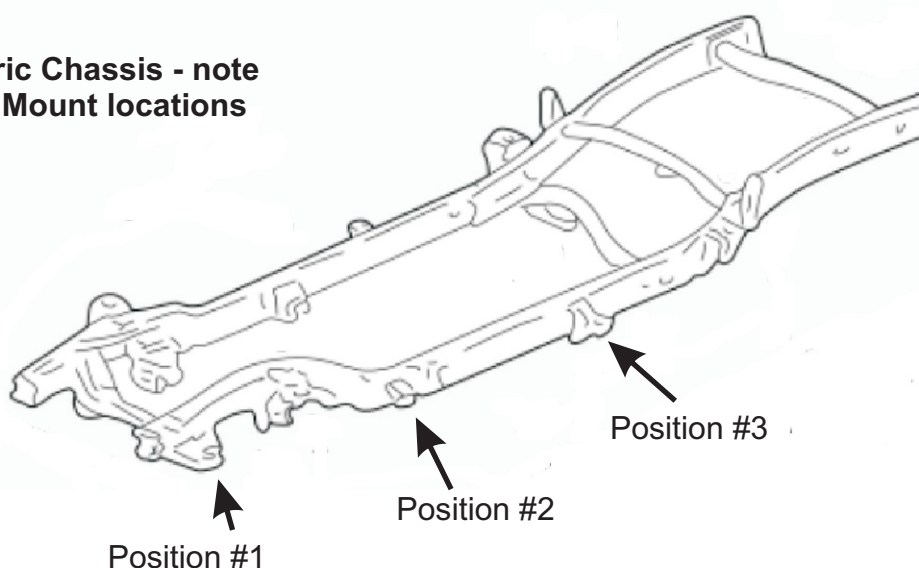
- Replace 1 mount at a time, but do not tighten bolts yet - note diagram on page 2 for bushing position.

- Once all mounts are replaced, confirm body is straight/aligned - tighten all nuts to Manufacturers specifications.

- It is recommended all hardware is re-checked after 500kms travelled.

- Flat washer 52x12.2x3 x2  
- Flat washer 53x14.3x3 x2  
- Flat washer 63.4x10x3 x2  
- Flat washer 50.7X10X3 x2  
- Flat washer 76X14.3X3 x2  
  
- Steel tube 22.2x17x38 x2  
- Bolt 7/16 x7 inch x2

**Generic Chassis - note  
Body Mount locations**



**N.B:** It is recommended that a licenced workshop or tradesperson carry out the above procedure and that workshop manual and relevant safety procedures are followed in addition to the above.

# Instructions

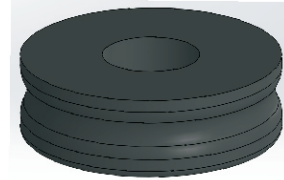
## Body Mount Bushings

### Position #1

- Use supplied steel tube  
- 22.2x17x38
- Use OE bolt

Flat washer 63.4x10mm  
Flat washer 50.7X10mm

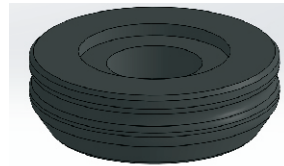
90309



Chassis



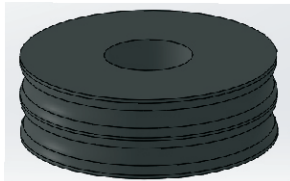
91404



Flat washer 50.7X10mm

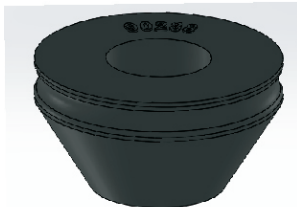


Flat washer 76x14.3mm



90289

Chassis



90288

Flat washer 53x14.3mm



OE washer/tube

### Position #2

- Use OE steel tube
- Use OE bolt.

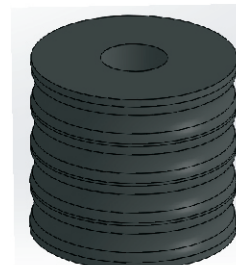
### Position #3

- Use OE steel tub.

**IMPORTANT** - shorten OE tube to 98mm total length.

- Use supplied bolt.

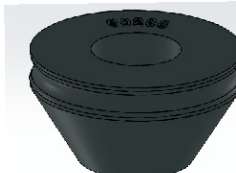
90300



Chassis



90301



Flat washer 52x12mm

