

Instructions

Engine Mount - Bushings

N.B: This instruction sheet should be used in conjunction with the workshop manual and proper safety procedures followed.

Application - Toyota Scion
- TC 2005-10

Always refer complete catalogue listing

Page 1 of 3

- Raise vehicle evenly and safely support.

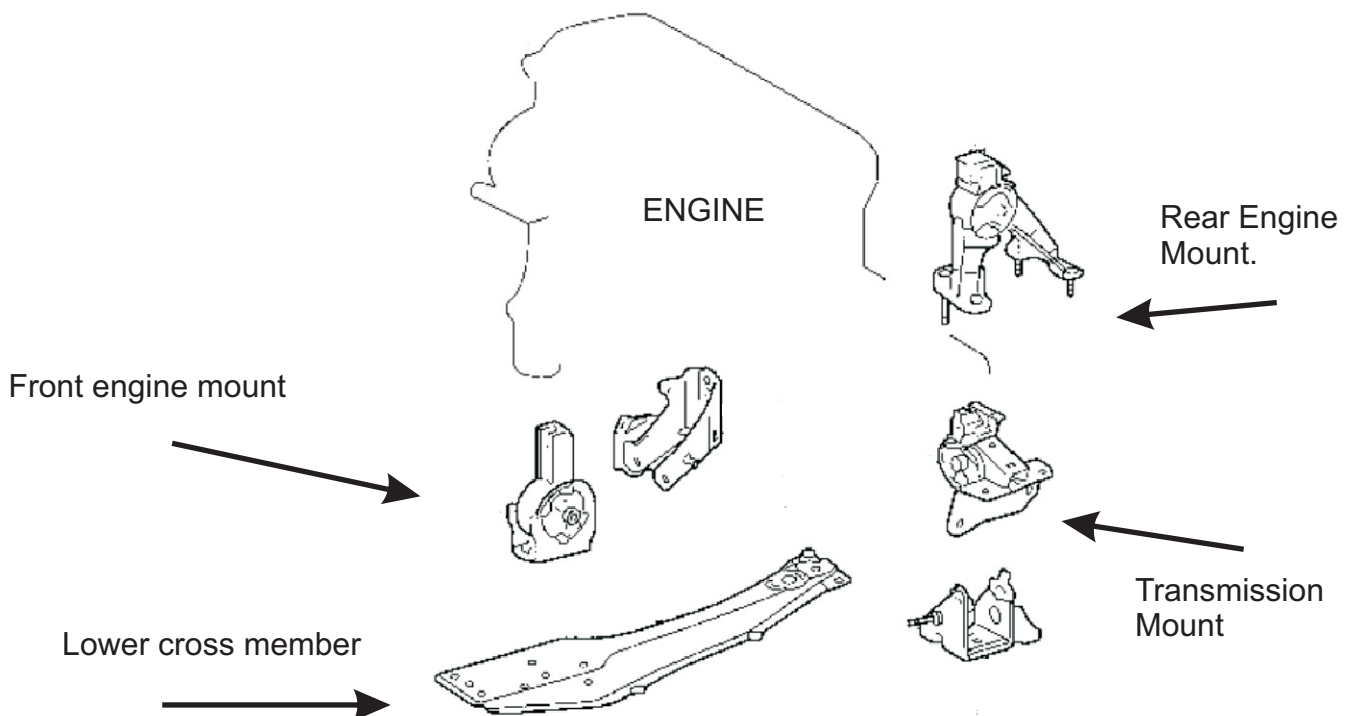
Never rely on a Jack only

- Confirm all parts in kit are present.
- Remove only one mount at any time.

Contents - Front mount bushing 91436
with steel tube 65mm long

- Rear mount bushing 91431
with steel tube 56mm long

- Transmission mount bushings -
91433 & 91434
with steel tube 60mm long
- Grease



N.B: It is recommended that a licenced workshop or tradesperson carry out the above procedure and that workshop manual and relevant safety procedures are followed in addition to the above.

Instructions

Engine Mount - Bushings

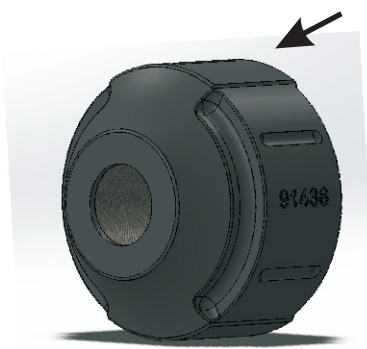
N.B: This instruction sheet should be used in conjunction with the workshop manual and proper safety procedures followed.

Page 2 of 3

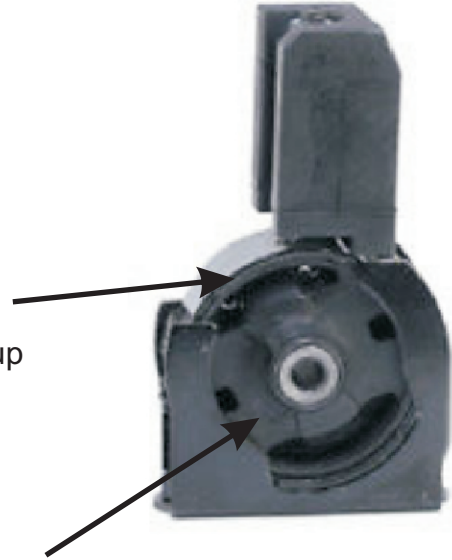
Continued;

• FRONT BUSHING:

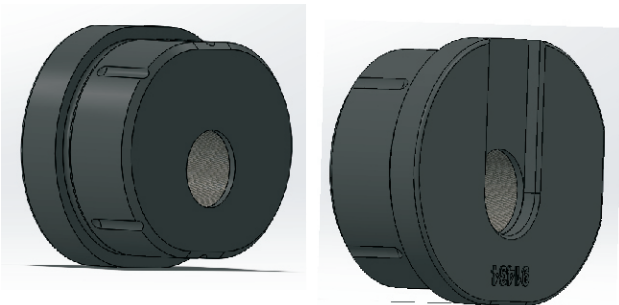
- The original rubber bushing will have to be rotated (inside the steel bracket), in order to slide out of steel bracket.
- Once bracket is clean, push in supplied bushing 91436.
- Grease bushing and push in steel tube 65mm long



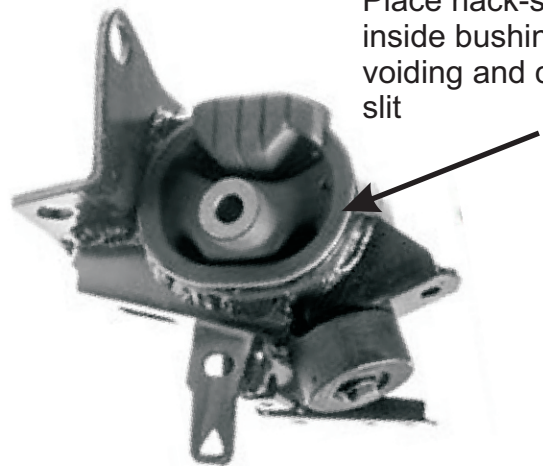
Note high areas on bushing - line these up with bracket



Rotate rubber bushing 90 degrees - so bushing can slide out easily



Place hack-saw inside bushing voiding and cut slit



• TRANSMISSION MOUNT;

- The original bushing will have to be cut out with a hack-saw -
- Clean housing and pop supplied bushing 91433 & 91434 into position.
- Grease bushing and push in supplied steel tube 60mm long.

Instructions

Engine Mount - Bushings

N.B: This instruction sheet should be used in conjunction with the workshop manual and proper safety procedures followed.

Page 3 of 3

Continued;

- REAR BUSHING;

- The original bushing will need to be cut out with a hack-saw. Alternatively use a hydraulic press to remove.

- Once removed, push in supplied bushing 91431. This is a one-piece bushing and will require pressing in. Use supplied grease or soapy water to pop in. Press in with solid flat surface.

- Grease bushing and push in supplied steel tube 56mm long.

- Cut through outer steel shell with via bushing voiding. Once slit is made - hammer old bushing out.



- All mount bolts should be re-checked after 100kms travelled.