

# Instructions

## Front Control Arm Bushings

**N.B:** This instruction sheet should be used in conjunction with the workshop manual and proper safety procedures followed.

### Install Guide

- Raise vehicle evenly and safely support.

*Never rely on a Jack only*

- Remove front wheels and proceed to un-bolt front control arms.

### **Note - a hydraulic Press will be required to replace bushings**

- Start by pressing out the small front bushing - this has no steel outer shell and will come out easily.
- Continue to press out the larger bushing including the outer steel.
- Clean Control arm eyes from any grease or dirt.
- Push in supplied bushings.
- Grease bushing internal diameter and face with supplied grease only.
- Add supplied steel tubes and re-install arms.

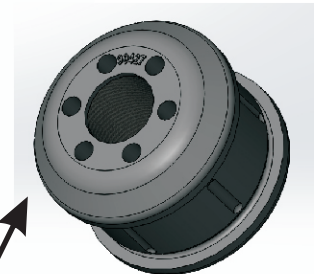
**Application** - Honda Civic  
- 2006-2011

*Always refer complete catalogue listing*

**Contents** - Bushing 90427 x2  
- Bushing 90713 x4  
- Steel tube 25.4x12.2x54 x2  
- Steel tube 25.4x14.3x63 x2  
- Grease



Press out original bushing including steel outer shell



Press new bushing 90247 in with soapy water - using flat surfaces

**N.B:** It is recommended that a licenced workshop or tradesperson carry out the above procedure and that workshop manual and relevant safety procedures are followed in addition to the above.