

# Instructions

## Body Mount Bushings

**N.B:** This instruction sheet should be used in conjunction with the workshop manual and proper safety procedures followed.

*Page 1 of 2*

**Application** - International Scout  
- 1972-81 4WD

*(Refer current catalogue for complete listing)*

Note: Any rusted nuts or bolts will require lubricant prior to disassemble.

When removing each mount, be sure to note each location on vehicle. Also, any existing shims will need to be re-used in their respective point

- Loosen all bolts on both sides of vehicle initially.

**Contents** - Bushing 90309 x8  
- Bushing 90658 x8

- Washer 63x13x3 x8  
- Washer 44x13x3 x8

- Steel tube 22x16x43 x8

**Be careful of fan shroud and other components while lifting.  
A hydraulic jack and timber may be used to lift the body.**

- Proceed by replacing mounts from 1 side of vehicle at a time.
- Replace 1 mount at a time, but do not tighten bolts yet - note diagram on page 2 for bushing position.
- Once all mounts are replaced, confirm body is straight/aligned - tighten all nuts to Manufacturers specifications.
- It is recommended all hardware is re-checked after 500kms travelled.



- Lubricate well before dismantling.
- Use timber to support body while lifting.
- Refer page 2 for mount orientation.

**N.B:** It is recommended that a licenced workshop or tradesperson carry out the above procedure and that workshop manual and relevant safety procedures are followed in addition to the above.

# Instructions Body Mount Bushings

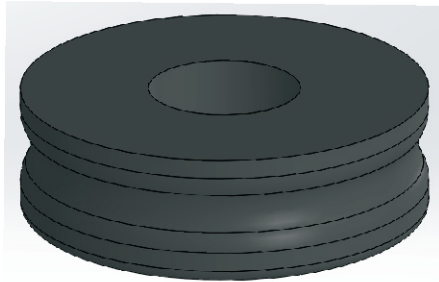
*Continued - Page 2 of 2*

Diagram below for all mount points in vehicle.

Re-use all hardware (if still suitable).

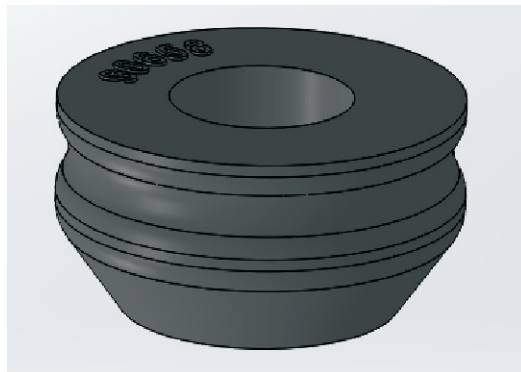
63mm OD washer → .....

Bushing 90309



Chassis → .....

Bushing 90658



44mm OD washer → .....

N.B: It is recommended that a licenced workshop or tradesperson carry out the above procedure and that workshop manual and relevant safety procedures are followed in addition to the above.