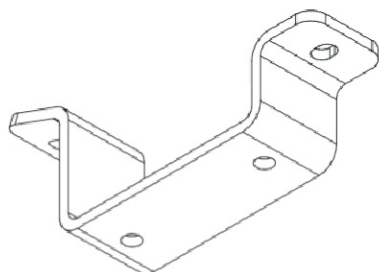


# Instructions

## Swaybar Mount Bracket

**N.B:** This instruction sheet should be used in conjunction with the workshop manual and proper safety procedures followed.



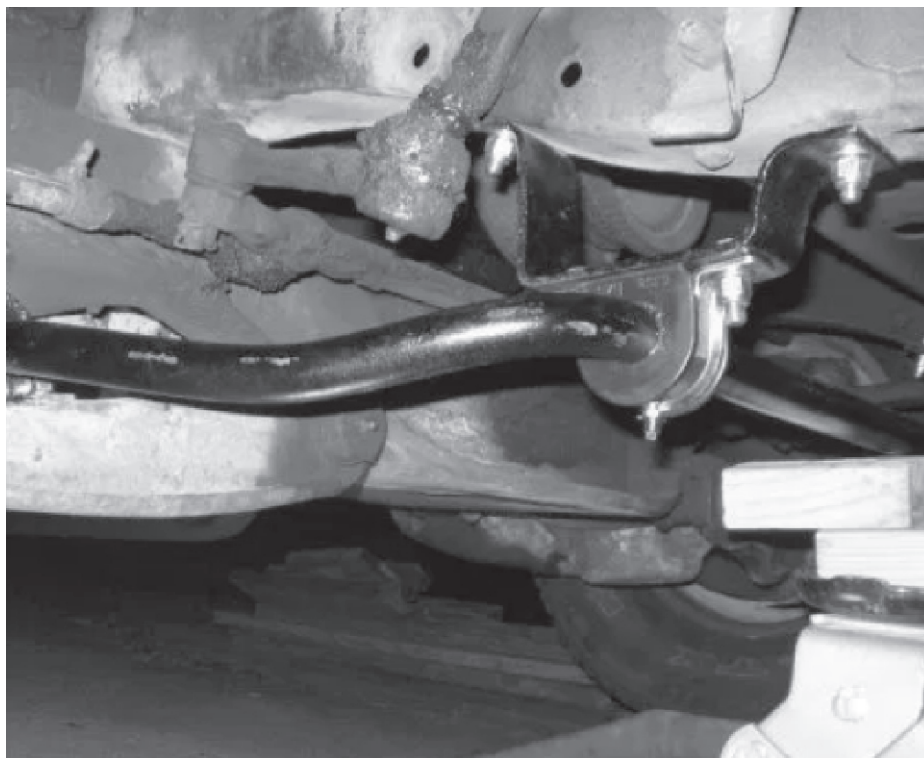
**Application - Chev C10 Pick Up**  
(Refer current catalogue for complete listing)

**Contents** - 2x steel brackets  
- 4x bolts  
- 4x nyloc nuts  
- 8x washers

- Raise vehicle evenly and safely support.

*Never rely on a jack only.*

- Note existing 3/8 holes in chassis just in front of steering system.
- Using supplied nuts and bolts and washers, mount up supplied bracket as per image below.
- Tighten bolts to 20 ft.lbs.
- Re-check bolts after 100 miles.



Place supplied 3/8 bolts  
in existing holes - in  
chassis rail.

**N.B:** It is recommended that a licenced workshop or tradesperson carry out the above procedure and that workshop manual and relevant safety procedures are followed in addition to the above.