

Instructions

Body Mount Bushings

N.B: This instruction sheet should be used in conjunction with the workshop manual and proper safety procedures followed.

Page 1 of 4

Application - Buick Skylark
- 1964-67

(Refer current catalogue for complete listing)

Note: Any rusted nuts or bolts will require lubricant prior to disassemble.

When removing each mount, be sure to note each location on vehicle. Also, any existing shims will need to be re-used in their respective point

- Loosen all bolts on both sides of vehicle initially.

Be careful of fan shroud and other components while lifting. A hydraulic jack and timber may be used to lift the body.

- Proceed by replacing mounts from 1 side of vehicle at a time.
Note - new bolts are supplied.

- Replace 1 mount at a time, but do not tighten new bolts yet - note image below and diagram on page 2 for bushing position.

- Once all mounts are replaced, confirm body is straight/aligned - tighten all nuts to Manufacturers specifications.

- It is recommended all hardware is re-checked after 500kms travelled.

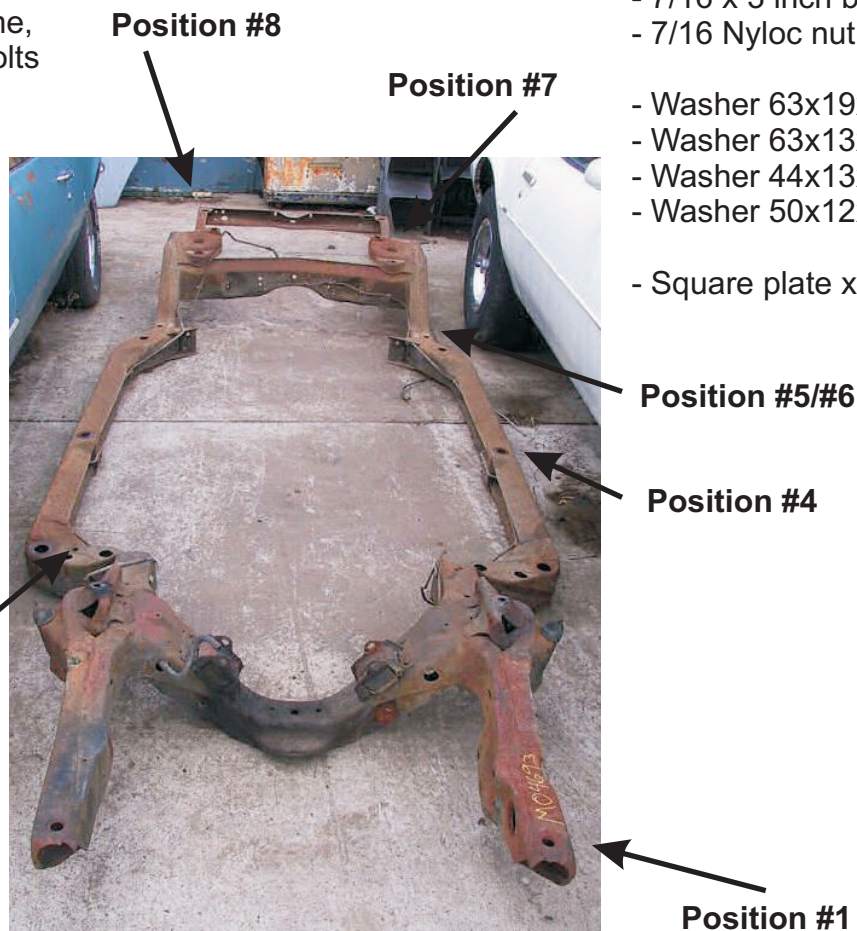
Contents - Bushing 90309 x8
- Bushing 90674 x2
- Bushing 91229 x4
- Bushing 91285 x2
- Bushing 91492 x10
- Bushing 91496 x4

- Steel tube 22.2x16.2x35 x6
- Steel tube 22.2x16.2x38 x6

- 7/16 x 2.25 inch bolt x2
- 7/16 x 2.5 inch bolt x8
- 7/16 x 3 inch bolt x2
- 7/16 Nyloc nut x2

- Washer 63x19x3.8 x4
- Washer 63x13x3 x10
- Washer 44x13x3 x2
- Washer 50x12x2.7 x12

- Square plate x4



N.B: It is recommended that a licenced workshop or tradesperson carry out the above procedure and that workshop manual and relevant safety procedures are followed in addition to the above.

Instructions Body Mount Bushings

Continued - page 2

Position #1

7/16x3 inch bolt

Steel washer 50x12x2.7mm

Bushing 91229

Bushing 91229

Steel tube 22.2x16x35mm

Bushing 91285

Square plate

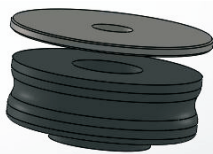
Square plate



Steel washer 44x13x3mm



Nyloc nut



Steel washer 63x13x3mm



Bushing 90309



Steel tube 22.2x16x38



Bushing 91492



Steel washer 50x12x2.7mm

Position #2 and #3



7/16 x 2.5 inch bolt

N.B: It is recommended that a licenced workshop or tradesperson carry out the above procedure and that workshop manual and relevant safety procedures are followed in addition to the above.

Instructions

Body Mount Bushings

Continued - page 3

Position #4

Steel washer 63x19x3.8

Steel washer 63x19x3.8

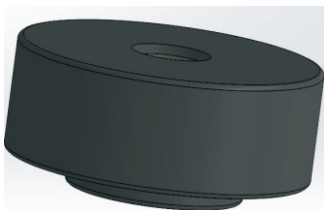
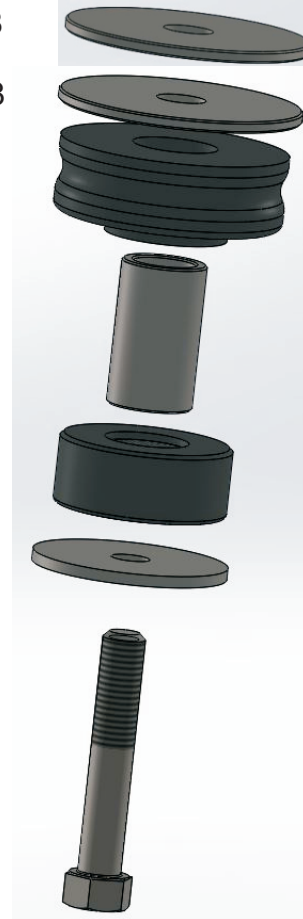
Bushing 90674

Steel tube 22.2x16x35

Bushing 91492

Steel washer 50x12x2.7mm

7/16x2 & 1/4 inch bolt



Position #5 and #6 - place bushing 91496 above chassis rail (under body)

N.B: It is recommended that a licenced workshop or tradesperson carry out the above procedure and that workshop manual and relevant safety procedures are followed in addition to the above.

Instructions Body Mount Bushings

Continued - page 4

Position #7

Steel washer 63x13x3mm

Steel washer 63x13x3mm

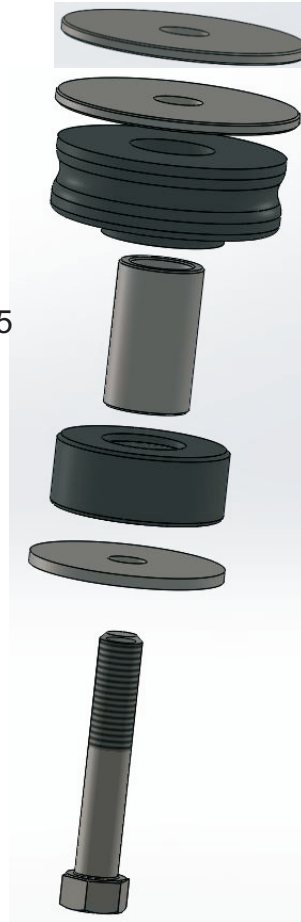
Bushing 90309

Steel tube 22.2x16x35

Bushing 91492

Steel washer 50mm OD

7/16 x 2.5 inch bolt



Steel washer 63x13x3mm

Bushing 90309

Steel tube 22.2x16x38

Steel washer 50mm OD

7/16 x 2.5 inch bolt

Position #8

N.B: It is recommended that a licenced workshop or tradesperson carry out the above procedure and that workshop manual and relevant safety procedures are followed in addition to the above.