

Instructions

Front Control Arm Bushings

N.B: This instruction sheet should be used in conjunction with the workshop manual and proper safety procedures followed.

- Raise vehicle evenly and safely support.

Never rely on a Jack only

- Proceed to remove front wheels.
- Un-bolt Swaybar link and ball joint, followed by bushing bolts - remove arm from vehicle.
- Remove old rubber bushing from Arm, including steel outer shell.

Clean arms of any grease/dirt.

- Push in new bushings as per below images.
- Grease bushings with supplied grease only.
- Re-fit arm to vehicle.

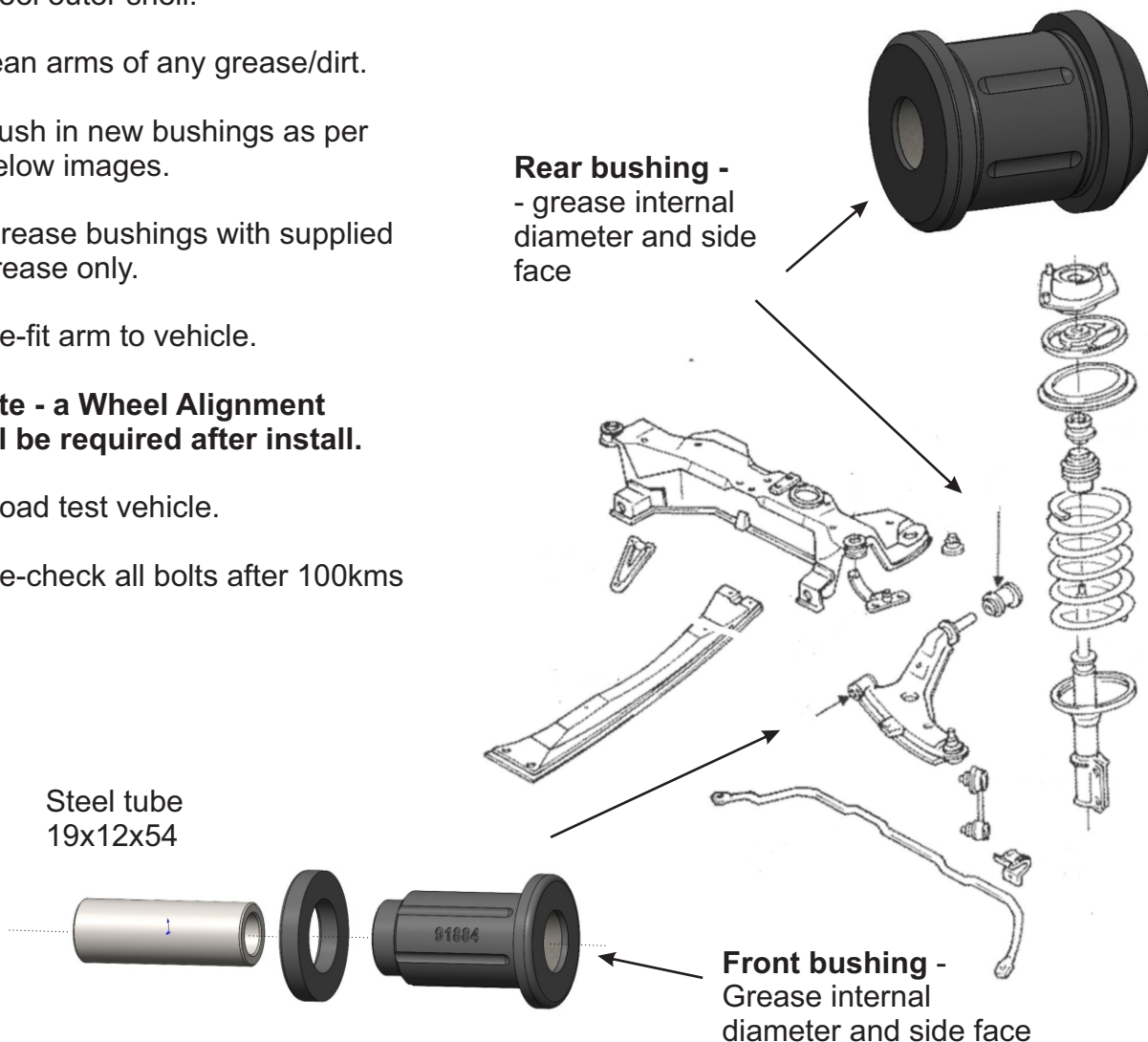
Note - a Wheel Alignment will be required after install.

- Road test vehicle.
- Re-check all bolts after 100kms

Application - Mitsubishi Eclipse
- Plymouth Laser
- 1990-1994

Always refer complete catalogue listing

Contents - Bushing 91884 x2
- Bushing 91883 x2
- Bushing 91885 x2
- Steel tube 19x12x54 x2
- Grease



N.B: It is recommended that a licenced workshop or tradesperson carry out the above procedure and that workshop manual and relevant safety procedures are followed in addition to the above.

Instructions

Front Control Arm Bushings

N.B: This instruction sheet should be used in conjunction with the workshop manual and proper safety procedures followed.

Page 2 of 2

Lower Control Arm

- Start by disconnecting Tie Rods from Hub.
- Un-bolt Shock Mount and Swaybar Link.
- Next - disconnect Ball joints from Hub.
- Un-bolt inner bushings.

**Important - careful Drive-shaft does not get stretched in CV boots.
Also - confirm spacer stays in position in front bushing bracket.**

- Once arm is removed, press out old bushings including steel outer shell. Remove any burrs and clean up any grease or dirt.
- Push in new bushings **91956** and **91957**.
- Grease bushing internal diameter and side face with supplied grease only.

