

Instructions

Rear Control Arm Bushings

N.B: This instruction sheet should be used in conjunction with the workshop manual and proper safety procedures followed.

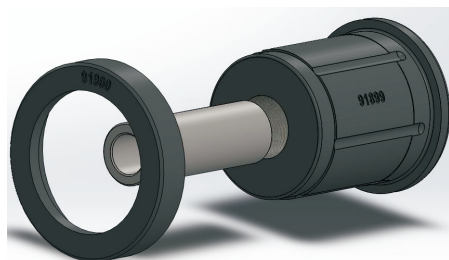
Note - this is a large exercise. We recommend only performing this job if you are familiar with this type of work.

Important - do not remove the original steel outer shell in lower trailing arm, and front bushing only of upper trailing arm.

- Raise vehicle evenly and safely support.

Never rely on a Jack only

- Remove and service only 1 arm at a time.
- For lower trailing arm, remove rubber only from bushings.
- For upper trailing arm, front bushing, remove rubber only
- Grease bushing internal diameter and side face with supplied grease only.
- Re-fit arms with original bolts - tighten to Manufacturers spec.



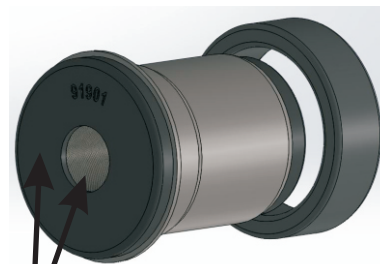
Push supplied bushing **91899** into original steel shell with **91900** poly spacer

Application - Buick Century/Lesabre
- Chev Impala/Caprice

(Refer current catalogue for complete listing)

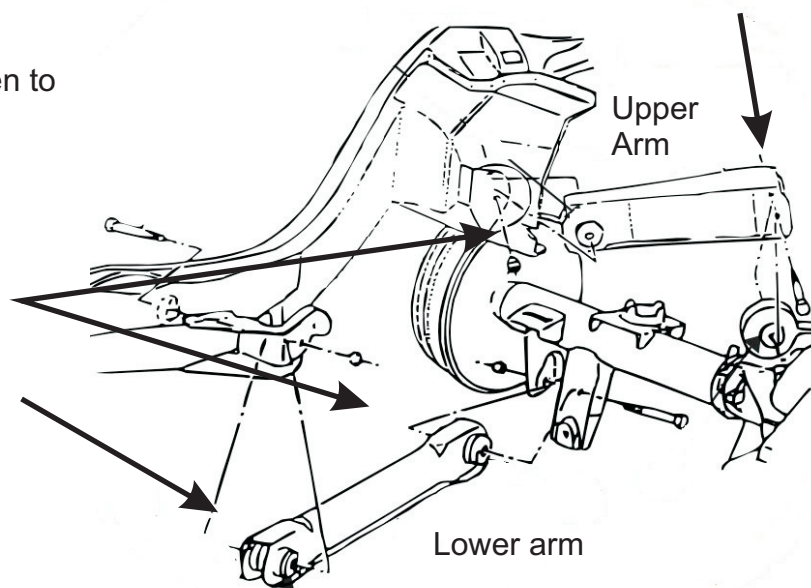
Contents - Bushing 90318 x2
- Bushing 91899 x6
- Bushing 91900 x6
- Bushing (shell) 91901 x2

- Steel tube 19x12.2x66 x2
- Steel tube 22.2x14.3x66 x6
- Grease



Grease ID
and face

Press supplied
shell bushing
91901 with **90318**
spacer into upper
rear mount



N.B: It is recommended that a licenced workshop or tradesperson carry out the above procedure and that workshop manual and relevant safety procedures are followed in addition to the above.