

Instructions

Body Mount Bushings

N.B: This instruction sheet should be used in conjunction with the workshop manual and proper safety procedures followed.

Page 1 of 2

Note: Any rusted nuts or bolts will require lubricant prior to disassemble.

When removing each mount, be sure to note each location on vehicle. Also, any existing shims will need to be re-used in their respective point

- Loosen all bolts on both sides of vehicle initially.

Be careful of fan shroud and other components while lifting. A hydraulic jack and timber may be used to lift the body.

- Proceed by replacing mounts from 1 side of vehicle at a time.
Note - new bolts are supplied.

- Replace 1 mount at a time, but do not tighten new bolts yet - note image below and diagram on page 2 for bushing position.

- Once all mounts are replaced, confirm body is straight/aligned - tighten all nuts to Manufacturers specifications.

- It is recommended all hardware is re-checked after 500kms travelled.

Application - Dodge Ramcharger
- 2WD and 4WD

(Refer current catalogue for complete listing)

Contents - Bushing 91391 x12

- Bushing 91392 x2

- Bushing 91393 x2

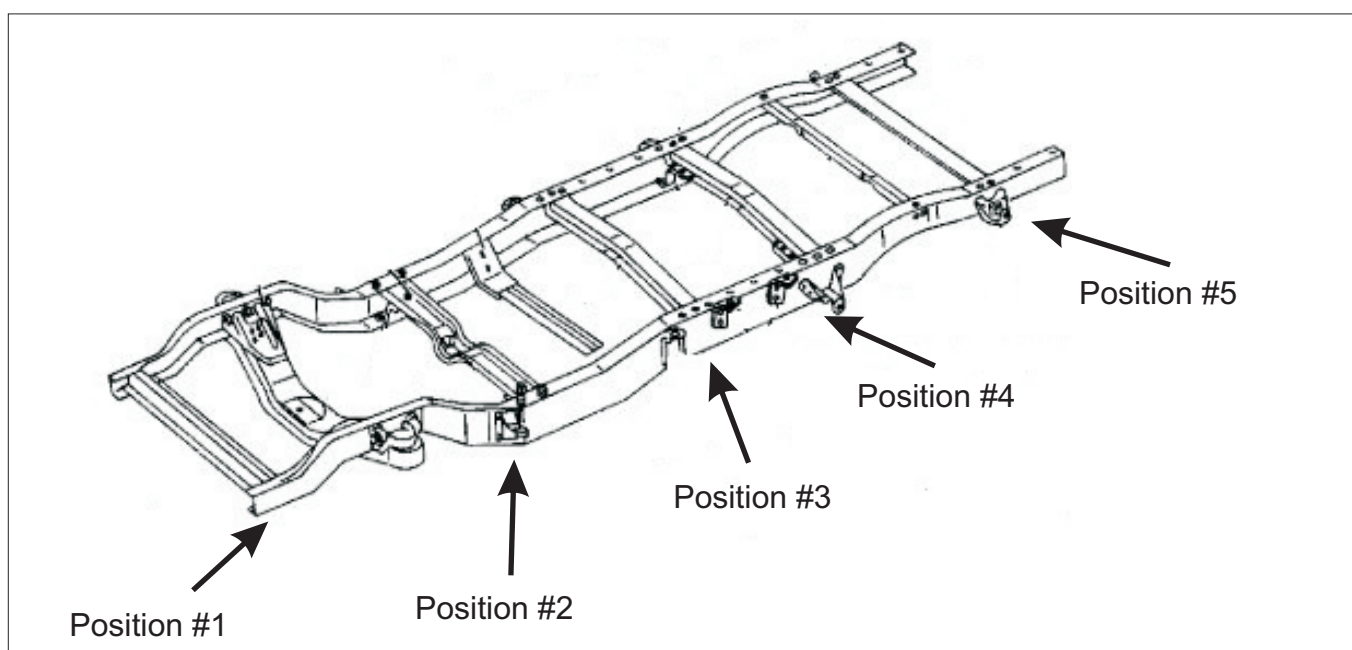
- Bushing 91489 x4

- Steel tube 18x12x30 x63

- Steel washer 63x19x4 x4

- Steel washer 63x13x3 x2

- Steel washer 50x13x3 x14



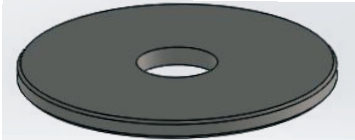
N.B: It is recommended that a licenced workshop or tradesperson carry out the above procedure and that workshop manual and relevant safety procedures are followed in addition to the above.

Instructions Body Mount Bushings

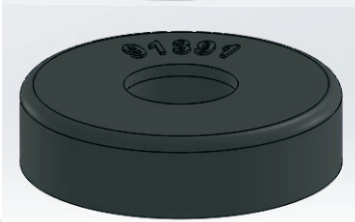
Continued - page 2

Positions #1, #4 and #5
Use supplied steel tubes.

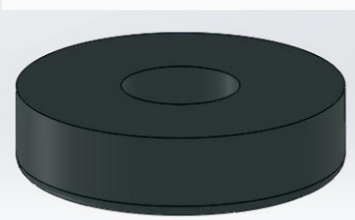
50mm Washer



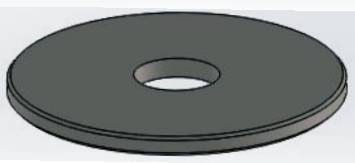
Bushing 91391



Bushing 91391

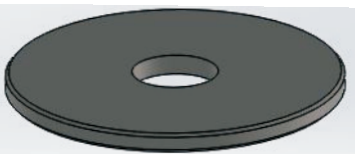


50mm washer



Position #2

63mm washer



Bushing 91392



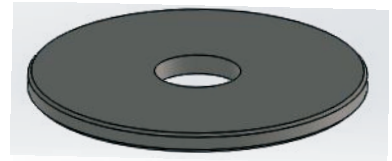
Bushing 91489



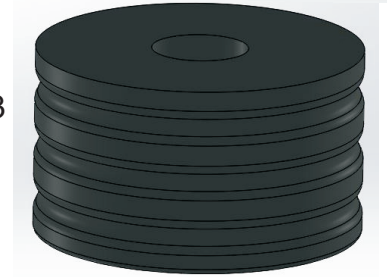
Re-use steel tubes

Position #3

63mm washer



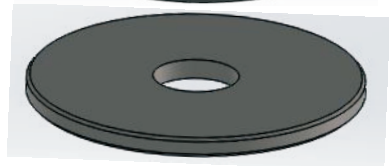
Bushing 91393



Bushing 91489



50mm washer



N.B: It is recommended that a licenced workshop or tradesperson carry out the above procedure and that workshop manual and relevant safety procedures are followed in addition to the above.