

Instructions

Rear Control Arm Bushings (Trailing Arms)

N.B: This instruction sheet should be used in conjunction with the workshop manual and proper safety procedures followed.

- Raise vehicle evenly and safely support.

Never rely on a Jack only.

IMPORTANT - do not press out old bushings

- Proceed to remove rear wheels.

Note - only remove 1 trailing arm at a time.

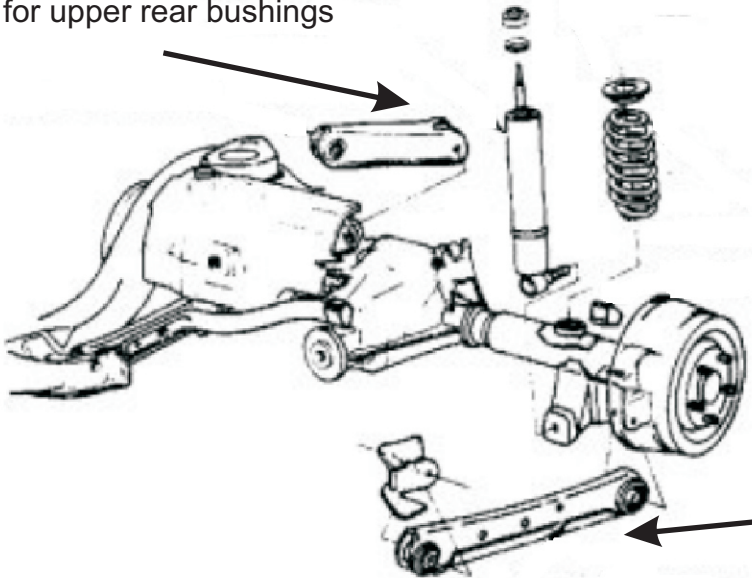
- Remove OE rubber and inner steel tube - do not remove OE outer shell.

- Once rubber is removed, push in supplied bushings into clean shell.

- Grease bushing internal diameter and side face with supplied grease only.

- After completion, re-check all bolts after 100 miles.

- Use bushings 91635 and 91637 for upper rear bushings

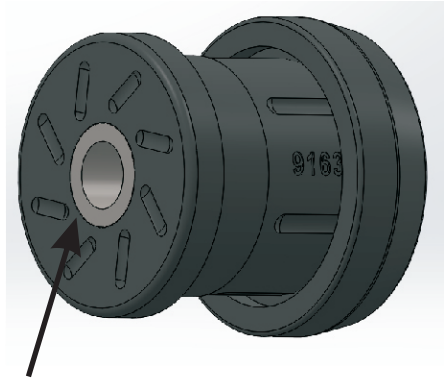


Application - Ford Crown victoria
- Mercury Grand Marquis
- 1992-97

Always refer complete catalogue listing

Contents - Bushing 91634 x6
- Bushing 91636 x6
- Bushing 91635 x2
- Bushing 91637 x2
- Steel tube 22.2x14.3x62
- Grease

Assembly of 91635 and 91637 below -



Grease bushing ID and face before inserting supplied steel tube

- Use bushings 91634 and 91636 for lower trailing arm - and upper front bushing.

N.B: It is recommended that a licenced workshop or tradesperson carry out the above procedure and that workshop manual and relevant safety procedures are followed in addition to the above.