

Instructions

Body Mount Bushings

N.B: This instruction sheet should be used in conjunction with the workshop manual and proper safety procedures followed.

Page 1 of 2

Install Guide

- Loosen all bolts on both sides of vehicle initially.

Be careful of fan shroud and other components while lifting. A hydraulic jack and timber may be used to lift the body.

- Proceed by replacing mounts from 1 side of vehicle at a time - refer diagrams on next page
- Replace 1 mount at a time, but do not tighten bolts yet - note any shims and re-use.
- Once all mounts are replaced, confirm body is straight/aligned - tighten all nuts to Manufacturers specifications.
- It is recommended all hardware is re-checked after 500kms travelled.

Application - Ford F150/250
 - 2WD & 4WD
 - Extra Cab

Contents - Bushing 90201 x 4
 - Bushing 90202 x 4
 - Bushing 90209 x 2
 - Bushing 90211 x 2
 - Steel tube 52.7mm x 2
 - Steel tube 63.5mm x 4
 - Flat plate x 2
 - Flat washer 44mm OD x 6
 - Flat washer 63mm OD x 4
 - Flat washer 76mm OD x 6
 - ½ inch x 4 inch bolt x 2
 - ½ inch x 4.5 inch bolt x 4
 - ½ inch nyloc nut x 6



N.B: It is recommended that a licenced workshop or tradesperson carry out the above procedure and that workshop manual and relevant safety procedures are followed in addition to the above.

Instructions

Body Mount Bushings

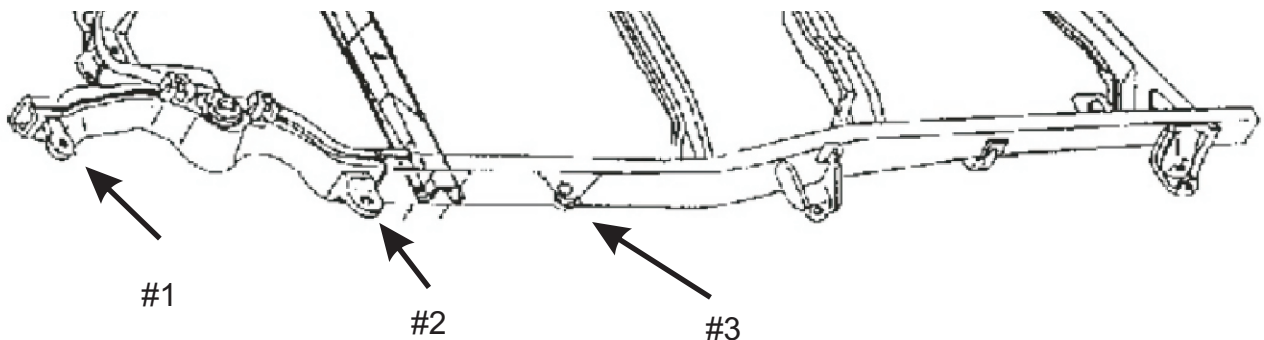
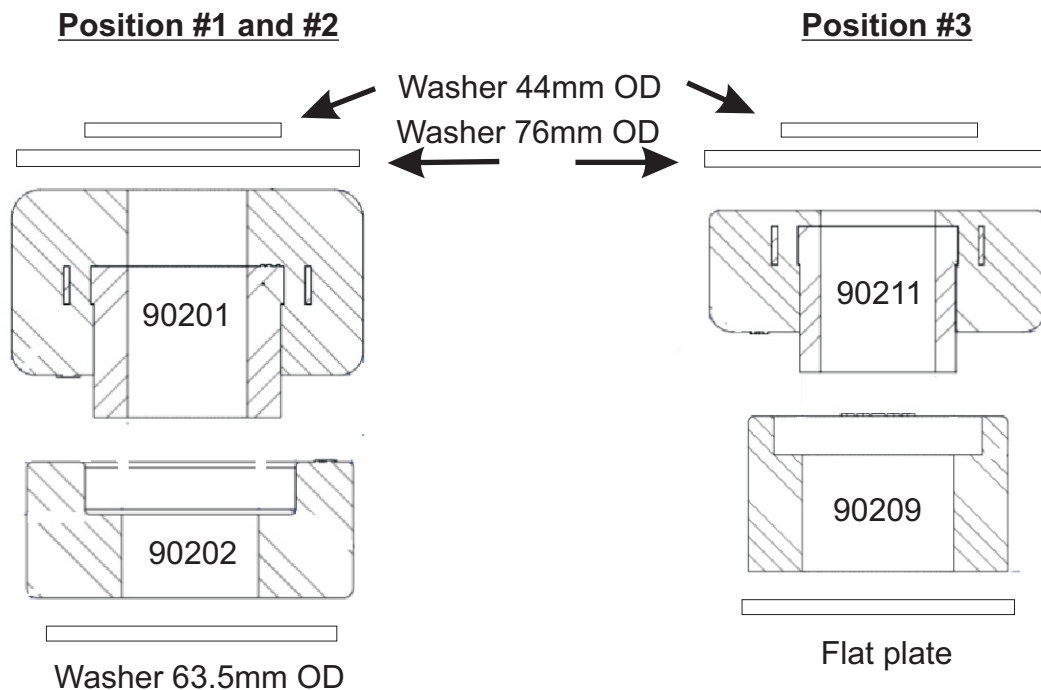
N.B: This instruction sheet should be used in conjunction with the workshop manual and proper safety procedures followed.

Page 2 of 2

- **The original bolts are located under the carper**

Note - the original mounts are stuck together. After loosening the originally bolt, un-wind approx. 1 inch, then hit bolt downwards with a mallet - to break mount apart.

- Remove front door sill trim panels.
- Remove rear seat belt bolts in rear floor
- Remove side panel trim in back cargo area to access Jack -
- Remove Jack and holder.
- Lift carpet in rear passenger area and rear storage area.



N.B: It is recommended that a licenced workshop or tradesperson carry out the above procedure and that workshop manual and relevant safety procedures are followed in addition to the above.