

Instructions

Rear Diff Bushings

N.B: This instruction sheet should be used in conjunction with the workshop manual and proper safety procedures followed.

- Raise vehicle evenly and safely support.

Never rely on a Jack only

- Loosen rear sub-frame mounting nuts but do not remove.

You can now access the 4 nuts on top of the differential.
Use a floor jack to support the differential.

- Remove the 2 differential mount bolts and the 4 nuts on top of the differential mount. Lower the differential but do not let it rest on the CV axle boots.

- The differential mount must be removed from the driver side by a series of twists and rotating the mount under the sub frame around the CV axle, sway bar and end links.

- The rubber bushings can be pressed out with a Hydraulic press - pushed 'c
Alternatively, drill hole in rubber and cut slit in steel outer shell.

- Once removed, push in new bushing 91779

- Lightly grease bushing ID and side face with supplied grease. Then push in supplied steel tube.

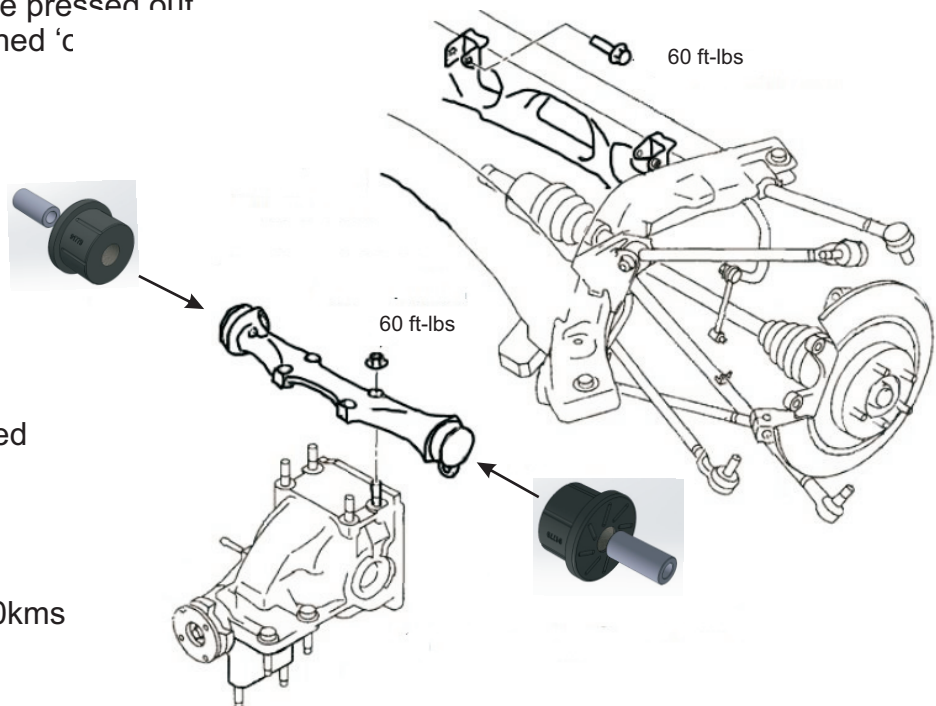
- Re-fit to vehicle.

- Re-check all bolts after 200kms

Application - Mazda Miata/MX5
- 2006-2014

Always refer complete catalogue listing

Contents - Bushing 91779 x2
- Steel tube 22.2x12.2x49.5 x2
- Grease



N.B: It is recommended that a licenced workshop or tradesperson carry out the above procedure and that workshop manual and relevant safety procedures are followed in addition to the above.