

Instructions

Body Mount Bushings

N.B: This instruction sheet should be used in conjunction with the workshop manual and proper safety procedures followed.

Page 1 of 2

Application - Ford Bronco
- 1984 - 1990

(Refer current catalogue for complete listing)

Any rusted nuts or bolts will require lubricant prior to disassemble.

Contents - Bushing 91618 x2
- Bushing 91619 x8
- Bushing 91620 x2
- Bushing 91621 x2
- Bushing 91622 x2
- Bushing 91623 x2
- Washer 50x13x3mm x2

- The carpet will have to be lifted first - plastic lift the trim up near the doors to do so.

Note - remove and replace mounts from one side of vehicle at a time.

- Loosen and remove all mounts from LH side - and loosen only mounts from RH side.
- Start to remove each mount. Note the original mounts are pressed together. Simply loosen the bolt a few threads (but don't remove yet) - and hit the bolt down to break the fit
- Proceed to lift body - use a jack and timber. The timber will prevent any damage to the floor. Only lift the body enough to remove mount - check items such as engine fans for clearance

Note - do not tighten any bolts until all mounts are replaced.

- Re-check all bolts after 500kms travelled.

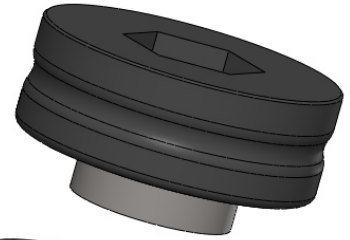
****Refer Page 2 Diagram For Bushing Location****

N.B: It is recommended that a licenced workshop or tradesperson carry out the above procedure and that workshop manual and relevant safety procedures are followed in addition to the above.

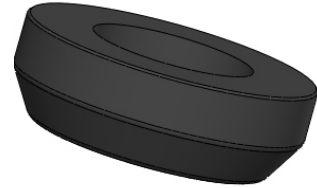
Instructions Body Mount Bushings

Bushing 91620

Position #1

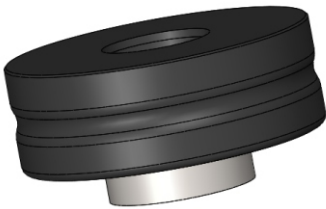


Bushing 91618

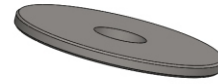
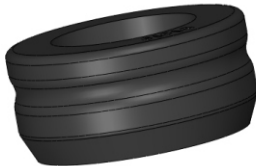


Bushing 91621

Position #2



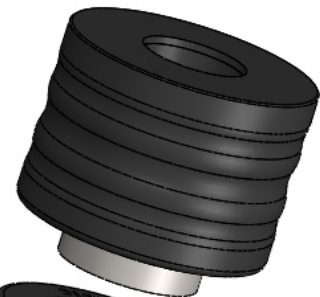
Bushing 91619



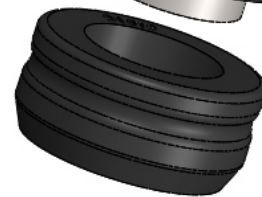
Place supplied washers here

Bushing 91623

Position #3

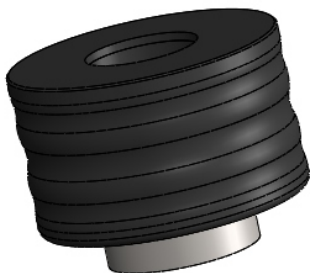


Bushing 91619

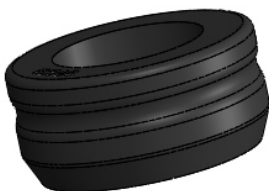


Bushing 91622

Position #4 and #5



Bushing 91619



N.B: It is recommended that a licenced workshop or tradesperson carry out the above procedure and that workshop manual and relevant safety procedures are followed in addition to the above.