

Instructions

Front Control Arm Bushings

N.B: This instruction sheet should be used in conjunction with the workshop manual and proper safety procedures followed.

Page 1 of 2

Application - Silverado 1500
- 2WD 1999 - 06

Always refer complete catalogue listing

- Raise vehicle evenly and safely support.

Never rely on a Jack only

IMPORTANT - RE-USE ORIGINAL STEEL SHELL IN CONTROL ARMS - DON'T PRESS OUT.

Contents - Bushing 90632 x 4
- Bushing 90655 x 2
- Bushing 90656 x 2
- Steel tube 22.2x16.2x76 x2
- Steel tube 22.2x16.2x91 x2
- Grease

UPPER CONTROL ARM -

- Remove front wheels and un-bolt upper ball joint. Un-bolt inner bushings and remove front arms.

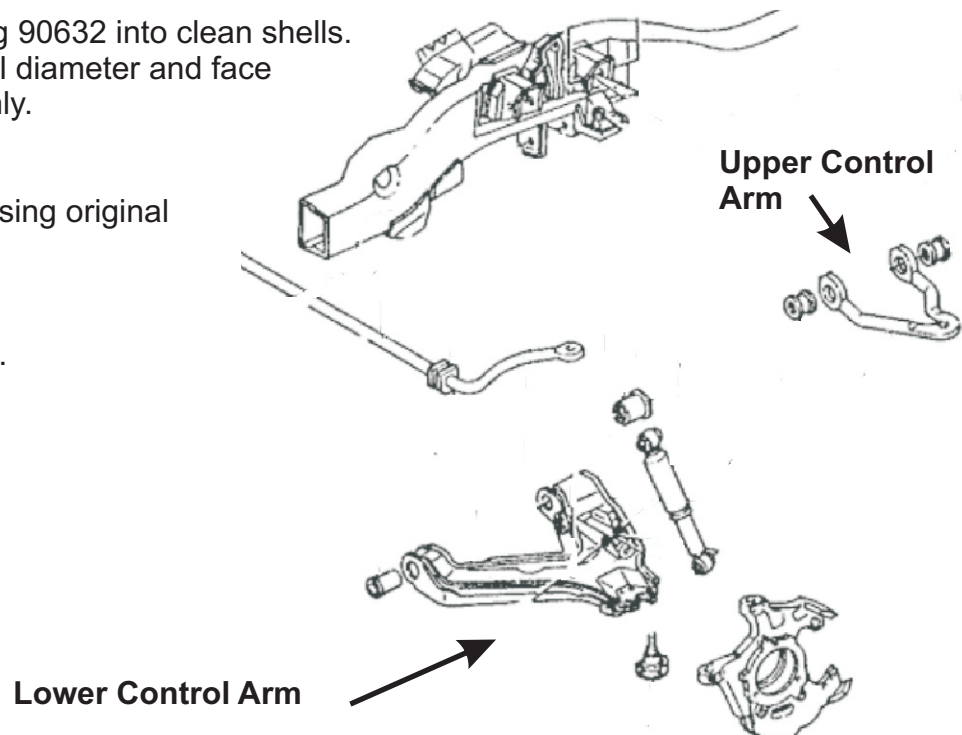
- Remove the rubber only - you may require heat to delaminate from outer shell.

NOTE - re-use the original inner steel tubes .

- Push supplied bushing 90632 into clean shells. Grease bushing internal diameter and face with supplied grease only.

- Re-fit arm to vehicle using original bolts.

- Tighten bolts to 80Nm.



N.B: It is recommended that a licenced workshop or tradesperson carry out the above procedure and that workshop manual and relevant safety procedures are followed in addition to the above.

Instructions

Front Control Arm Bushings

N.B: This instruction sheet should be used in conjunction with the workshop manual and proper safety procedures followed.

Continued - Page 2 of 2

Application - Silverado 1500
- 2WD 1999 - 06

Always refer complete catalogue listing

LOWER CONTROL ARM -

- Before removing lower arm, The Torsion bar will have to be disconnected.

WARNING - working with Torsion bars can be dangerous. It is suggested only a qualified person do this.

Note - re-use original steel outer shell

- Remove internal rubber only - you may require heat to delaminate rubber from outer shell. Discard inner steel tubes.
- Push supplied bushings 90655 and 90656 into clean shells
- Grease bushings with supplied grease only. Use supplied steel tubes.
- Re-fit arm to vehicle using original bolts.
- A wheel alignment will be required after install.
- Re-check all bolts after 100 miles.

Contents - Bushing 90632 x 4
- Bushing 90655 x 2
- Bushing 90656 x 2
- Steel tube 22.2x16.2x76 x2
- Steel tube 22.2x16.2x91 x2
- Grease

Push bushing into original steel outer shell in arm.

Grease bushing face and internal diameter with supplied grease only

