

Fitting Instructions #Z7011

Jeep WK1

Front Upper Control arm Bushing Kit

© 2011 The Matheson Group Inc. All Rights Reserved

- With the vehicle on jack stands/hoist, remove the front upper control arms;
- Remove original shell parts from the housings with the use of a hydraulic press and suitable pressing tools;
- Clean housing areas to remove any old original bushing materials ensuring the bores are smooth and free of burrs;
- Using a press and the images as a guide press the shells into the arms up to the step on the shell;
- Grease the bores of the installed shells and using an Arbour press the bushes “1263” into the shells;
- Grease the bore of the bushes and using an Arbour Press or similar press crush tubes into the bushes;
- Refit the upper control arms to the car and tighten all the bolts;
- Ensure that all fasteners are torque to manufacturer’s specification and carry out a wheel alignment.

Figure 01 – Front upper Control Arm, bushing installation

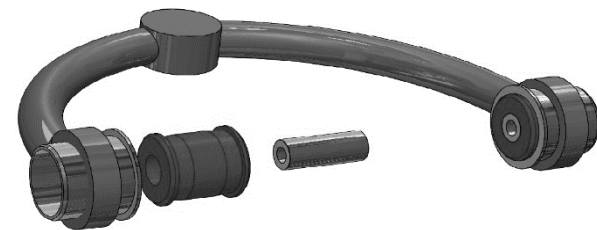
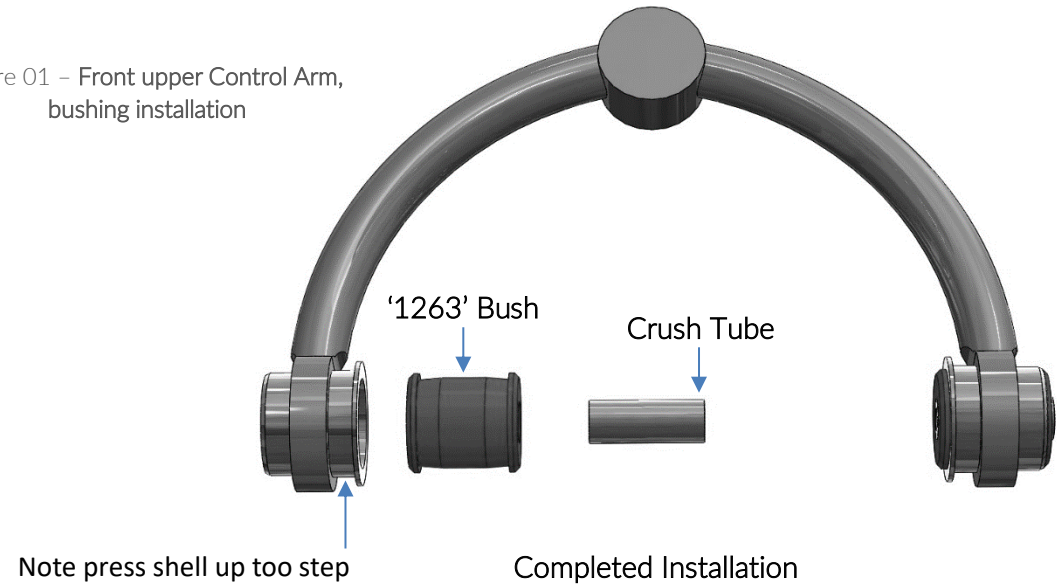


Figure 02 – Front upper Control Arm, bushing installation