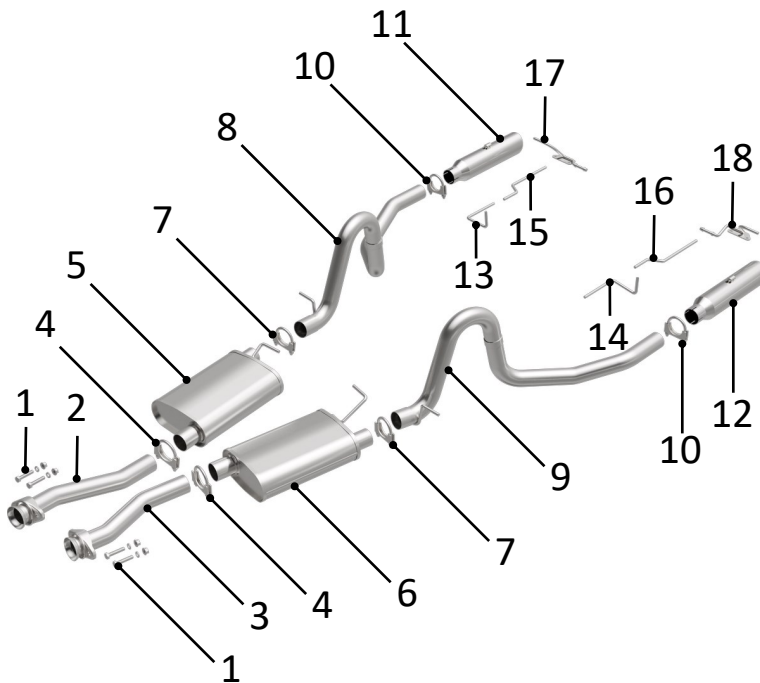


BRExhaust™

A **MAGNAFLOW** GROUP COMPANY

INSTALLATION INSTRUCTIONS | PART NO. 106-0517



STEP 1: (Carefully read all instructions before installation)
Disconnect the vehicle's battery before removal of the OEM exhaust system. This will prevent electrical accidents and will reset the computer if it applies to the vehicle. Remove existing exhaust system from the vehicle. Only remove parts that will be replaced. Clean existing flange with a wire brush to ensure proper sealing.

STEP 2: Attach passenger side **[2] Inlet Assembly** and driver side **[3] Inlet Assembly** to existing exhaust with supplied **[1] Hardware**.

STEP 3: Replace existing muffler mount bracket assemblies with supplied passenger side **[17] Bracket Assembly** and driver side **[18] Bracket Assembly**.

STEP 4: Attach passenger side **[5] Muffler Assembly** and driver side **[6] Muffler Assembly** to **Bracket Assemblies** and **Inlet Assemblies** with supplied **[4] Clamps** and existing isolators.

STEP 5: Attach passenger side **[8] Over-Axle Assembly** and driver side **[9] Over-Axle Assembly** to existing isolators and **Muffler Assemblies** with supplied **[7] Clamps**.

STEP 6:

For 1998 vehicles slide **[15] Hanger** into passenger side **[11] Tip Assembly** and **[16] Hanger** into driver side **[12] Tip Assembly** then attach to **Over-Axle Assemblies** with supplied **[10] Clamps**. Attach **Hangers** to existing isolators.

For non 1998 vehicles slide **[13] Hanger** into passenger side **[11] Tip Assembly** and **[14] Hanger** into driver side **[12] Tip Assembly** then attach to **Over-Axle Assemblies** with supplied **[10] Clamps**. Attach **Hangers** to existing isolators.

STEP 7: Tighten all clamps and bolts starting from rear of the vehicle. **(DO NOT EXCEED 30FT-LB WHEN TIGHTENING CLAMP AND CHECK ALL CLAMPS AFTER 50 MILES. RETIGHTEN IF NECESSARY)**

WARNING:

When working on, under, or around any vehicle exercise caution. Please allow the vehicle's exhaust system to cool before removal, as exhaust temperatures may cause severe burns. If working without a lift, always consult vehicle manual for correct lifting specifications. Always wear safety glasses and ensure a safe work area. Serious injury or death could occur if safety measures are not followed.



BRExhaust recommends
professional installation
for all products

Technical Support: 1-800-631-7271

BRExhaust — 1901 Corporate Ctr, Oceanside, CA 92056

www.brexhaust.com

REV 000 1/30/2024