

INSTALLATION GUIDE



62-U5074 Partskeeper Carry Case (ALUMINUM)



Scan the QR for the latest Install-Guide.



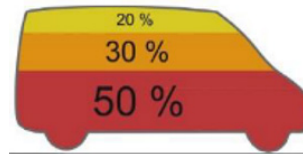


BEFORE YOU BEGIN



WARNING

- Failure to use Ranger Design-provided fasteners, brackets, and proper installation guidelines could increase risk of serious personal injury and/or death.
- If drilling is required to complete this installation: improper drilling can cause property damage to vehicles and could lead to electric shock, fire, or even death.
- If drilling is required to complete this installation: Ensure that drilling is only performed on areas of the vehicle allowed by the vehicle's Original Equipment Manufacturer's Body Builders Layout Book (or equivalent document).
- Prior to installation, inspect the vehicle to ensure that installation will not interfere with, or cause obstruction of, any critical components such as electrical wiring, fuel tanks, fuel-cells, locks, latches, etc.
- The installer or manufacturer is responsible for ensuring anchorages are installed onto suitable wall and floor structures; wall and floor strength must meet applicable performance requirements.
- Do not install systems into any weak or unsound materials such as plastics, woods, thin-walled metals, etc. without proper reinforcement.
- Do not install this product where it could interfere with the deployment of airbags. Failure to comply could result in death or serious injury.
- Do not install this product where it could ingress on the Transit Occupant Protection Zone. Failure to comply could result in death or serious injury.
- Incorrect installation could cause water leaks, electric shock or fire.
- Any cargo vehicle with any cargo or equipment should use a certified partition. See Ranger Design website for some partition options. (<https://rangerdesign.com/>)
- Mountings rails are recommended for any attachment to the vehicle walls.
- All items in the cargo area should be properly secured and partition doors closed while the vehicle is in motion.
- Check your vehicle's tare weight and remaining load capacity with all the equipment installed. Never exceed the maximum Gross Vehicle Weight Rating (GVWR), Gross Axle Weight Ratings (GAWRs), or other maximum loads permitted by the vehicle's Original Equipment Manufacturer (OEM) and required by law.
- The heaviest items must be placed towards the bottom of the vehicle, while the lightest ones can be arranged upwards. Vehicle cargo loading weight proportion should follow the following guidelines:



- The final alterer and/ or modifier should review the warning sheet with the customer before the vehicle is released to the customer or for general use. These instructions should remain with the vehicles a all times.
- Any modification or unintended use of this product voids any warranty and could create a hazardous condition.
- Ranger Design provides recommended assembly and installation instructions which should be followed to ensure correct operation. Failure to do so could result in invalidating the product's compliance, warranty and cause injury. Notwithstanding, the final stage vehicle alterer and/or modifier is responsible for the integration, installation, and compliance of the product in its final location to all applicable regulations and standards. Failure to maintain compliance of the vehicle to applicable regulations and standards could be punishable by law. Alterers and/or modifiers should consult with all local authorities prior to commissioning.



CAUTION

- Drilling is required to complete this installation. Before drilling, ensure that you will not hit any critical parts of the vehicle like the gas tank, wiring harness, or hose. Consult the vehicle OEM documentation as necessary. When drilling, use a drill collar to reduce the risk of damage to the vehicle.
- Any materials, padding, or glazing installed in the vehicle must comply with FMVSS/CMVSS 201/205/302, as applicable.
- In the event of a motor vehicle accident or collision where a Ranger system has been installed, especially ones where the vehicle structure is damaged and/or the air bags deploy and/or the vehicle has been towed, the system must be inspected to ensure continued soundness and safety before returning the vehicle to service. Damaged components should be replaced as necessary.
- All system components should be regularly inspected, cleaned, and maintained pursuant to Ranger guidelines.

QUICK START GUIDE

Phase 1 - Assembly

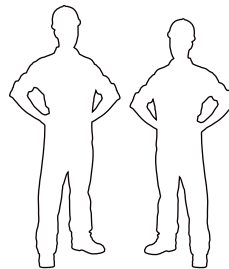
- 1.1 Setup..... 4
- 1.2 Partskeeper Holder & Base Assembly..... 5

Phase 2 - Installation

- 2.1 Partskeeper Carry case Installation..... 7

REQUIRED ITEMS

- Cordless Impact
- Rivet Gun
- 3/8" Driver Bit

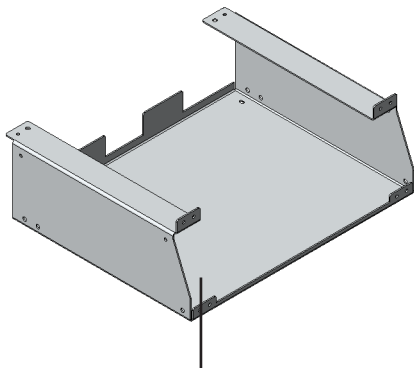


**2
PERSONS**

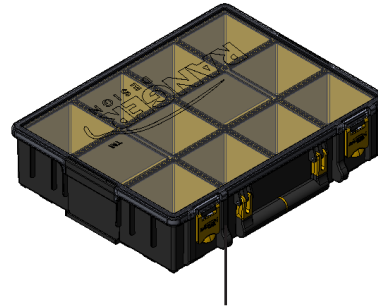
PHASE 1 – ASSEMBLY

1.1 SETUP

1.1.1 Unpack components; compare with the bill of materials.



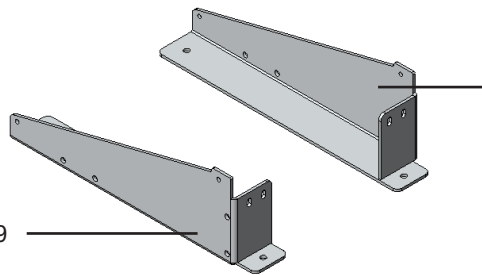
50-700



62-U5079



EN - 410 x 17"



50-710

50-709

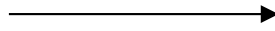
1.1.2 Verify all parts are present.

BILL OF MATERIALS

Item No.	Description	Qty.
50-700	Partskeeper Holder	4
50-709	Tilted Left Side Base	1
50-710	Tilted Right Side Base	1
62-U5079	Plastic Partskeeper Case	4
EN - 410 x 17"	Bin Extrusion, 17"	2
94-5016	Assembly Fastener Kit	1
96-5016	Install Fastener Kit	1

1.1.3 Fastener kits.

94 - 5016 Fastener Kit



Fastener Assembly

18x



96-202

Closed Rivet
3/16" x 1/4"
ALUM/STEEL

18x



#96-202 Closed Rivet

8x



92-102

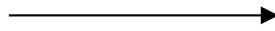
Screw HWH
#14 x 1"
ZINC

8x



#92-102 Screw #14 x 1"

96 - 5016 Fastener Kit



Fastener Assembly

8x



96-202

Closed Rivet
3/16" x 1/4"
ALUM/STEEL

8x



#96-202 Closed Rivet

4x



92-102

Screw HWH
#14 x 1"
ZINC

4x

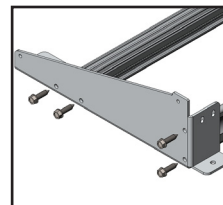
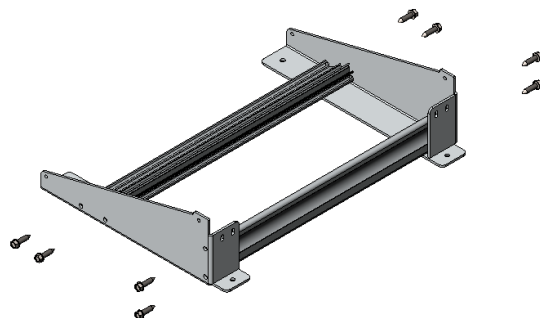


#92-102 Screw #14 x 1"

PHASE 1 – ASSEMBLY

1.2 PARTSKEEPER HOLDER & BASE ASSEMBLY

1.2.1 Attach the bin extrusion to the left and right side base.



TOOLS

- Cordless Impact
- 3/8" Bit

HARDWARE USED

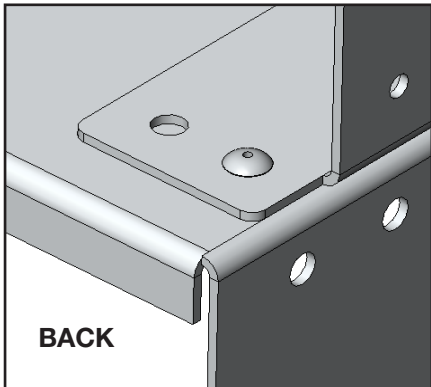
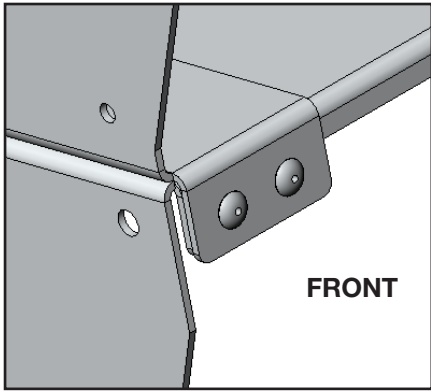
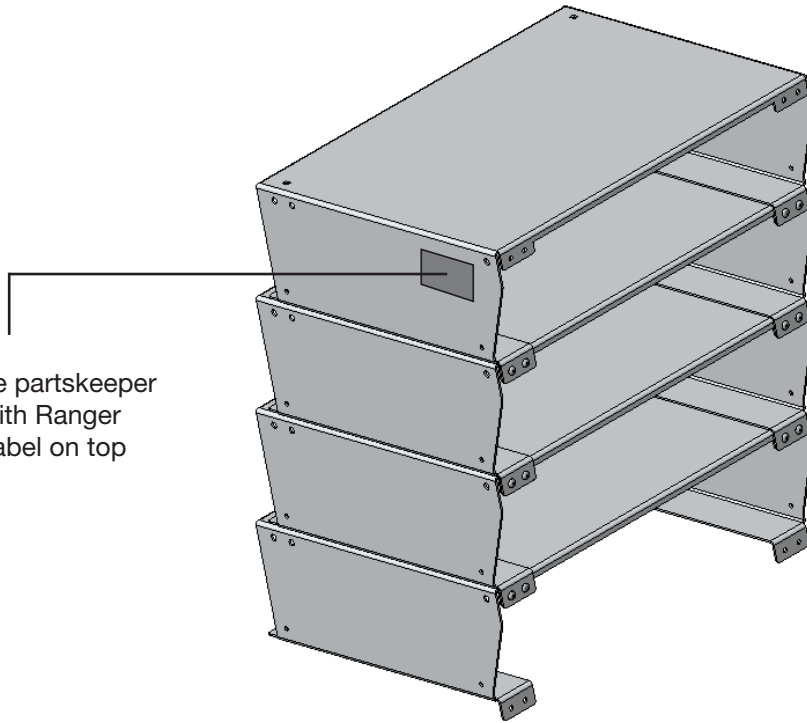
8x 94-5016



#92-102 Screw #14 x 1"

1.2.2 Stack and rivet the partskeeper holder to each other.

NOTE: Place the partskeeper holder with Ranger Design label on top

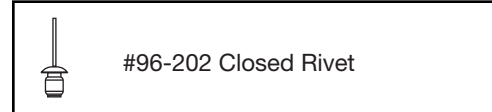


TOOLS

- Rivet Gun

HARDWARE USED

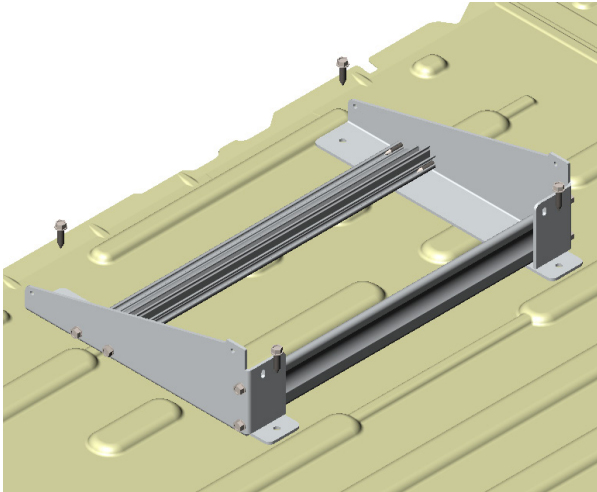
18x 94-5016



PHASE 2 – INSTALL

2.1 PARTSKEEPER CARRY CASE INSTALLATION

- 2.1.1**
- Lift the assembled partskeeper carry base to the vehicle, then put it in place.
 - Screw the assembled partskeeper carry base to the floor vehicle.



TOOLS

- Cordless Impact
- 3/8" Bit

HARDWARE USED

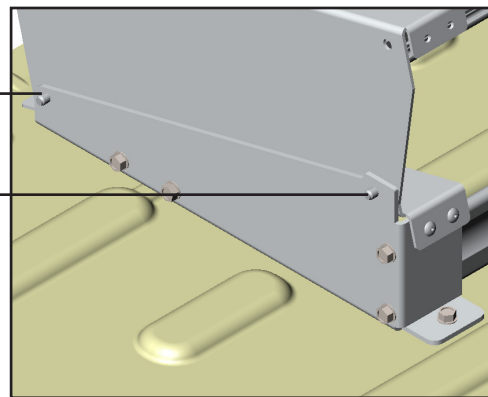
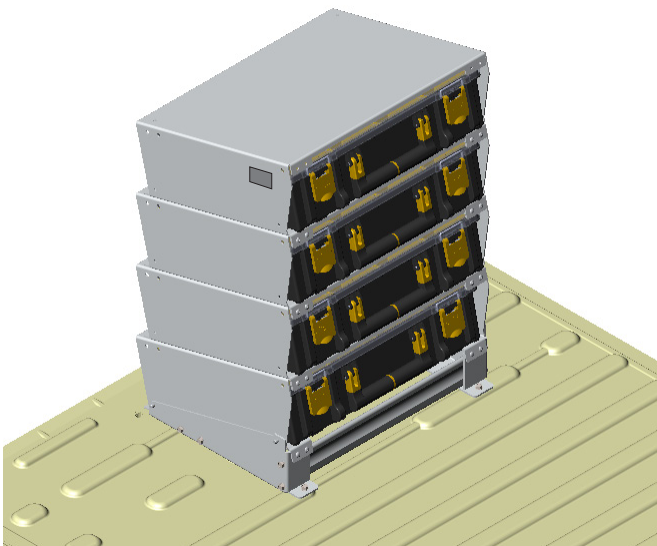
4x 96-5016



#92-102 Screw #14 x 1"

- 2.1.2**
- Rivet the partskeeper holder to the partskeeper carry base.
 - After riveting the partskeeper holder slide the partskeeper case inside the partskeeper holder.

NOTE: Rivet from inside not from outside.



TOOLS

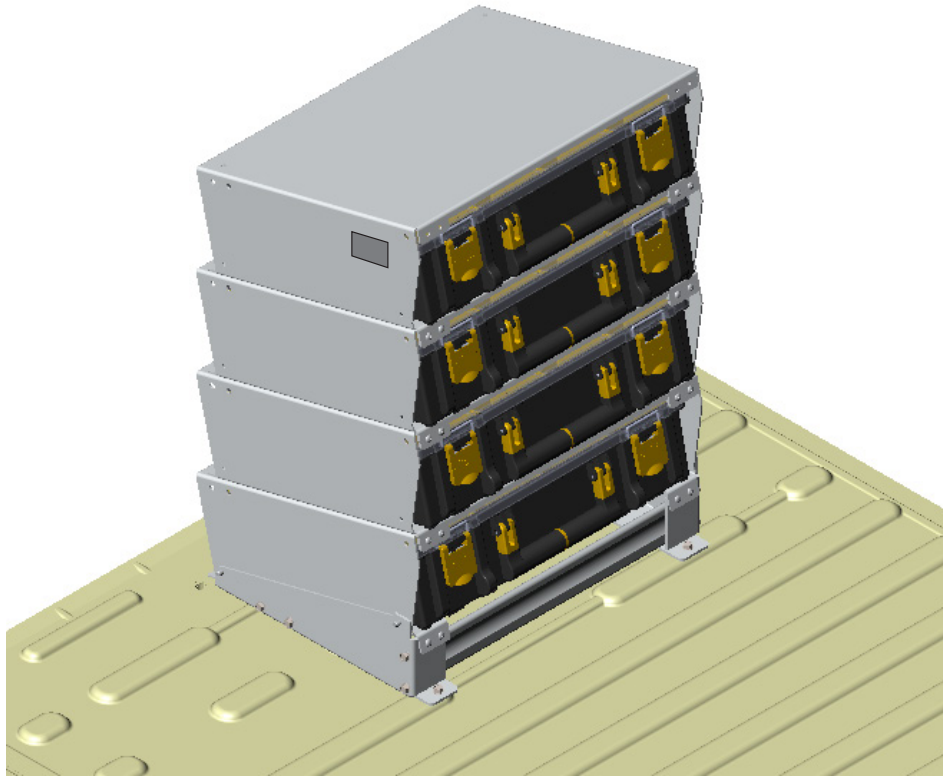
- Rivet Gun

HARDWARE USED

4x 96-5016



#96-202 Closed Rivet



**“You have successfully installed your
62-U5074**

Thank you for doing business with us.”

For any feedback or suggestions you may have, please contact: cs@rangerdesign.com

